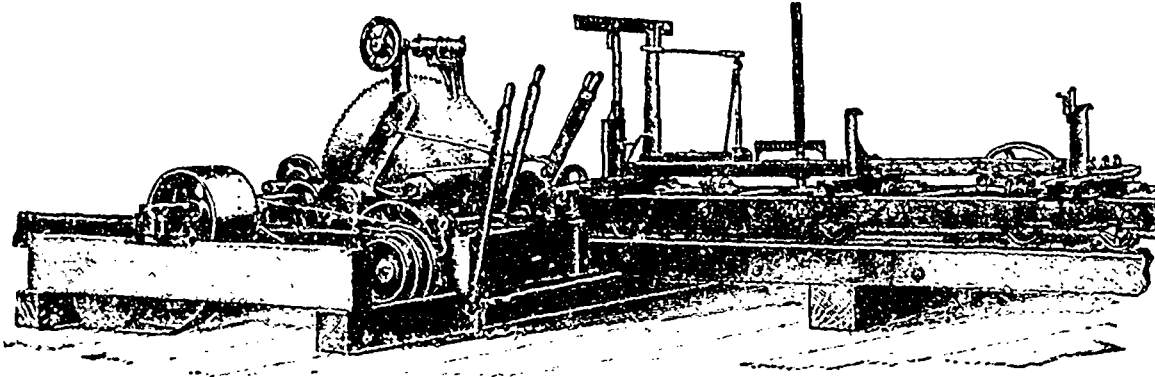


# "CANADIAN" OVER LOG SAW GUIDE

PATENTED IN CANADA AND THE UNITED STATES.



This Over Log Saw Guide is no longer in the experimental state. Any intelligent sawyer can handle them, and use much thinner saws, thus saving a large amount of lumber that is usually converted into saw dust. One of our leading saw manufacturers says: 'They will be a great help to any saw.' I make them to fit on existing saw frames, and sell with or without saw rig as desired.

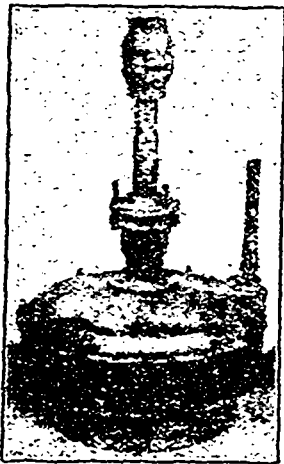
The saving in lumber will pay entire cost in very few days' sawing.

Be "up-to-date" and have a "Canadian" Over Log Saw Guide. Order now and get reduced price.

Send For Catalogue of Saw, Shingle and Lath Machinery.

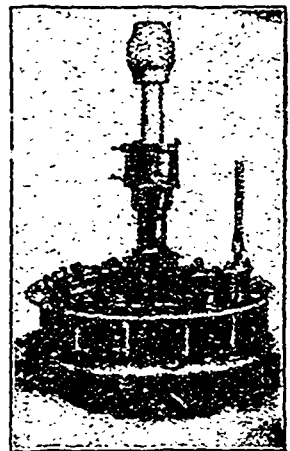
F. J. DRAKE, - Belleville, Ont.

## Do You Need a Turbine?



Now is the best possible time for replacing your old, worn-out wheel with a new Turbine that will save Worry, save Time, and make Money for you. If you want a well built wheel, a wheel that will give you steady reliable power every day, a wheel that will save water, a wheel that will last you a lifetime, and that is sold at a reasonable price, then write us for catalogue and prices on the

**Standard Leffel and Vulcan Turbines.**



They are better developers to-day than ever before, and are growing in popularity, as our order books show.

We have now for distribution our new **SAW** and **SHINGLE MILL MACHINERY CATALOGUES**, with engravings and descriptions of our machines with their latest improvements. We will be glad to send you one on receipt of your address. You cannot buy a better Portable Mill than the "Lane Improved".

**MADISON WILLIAMS, PORT PERRY, ONT.**

H. E. PLANT, Agent,  
Cor. Common & Nazareth Sts., MONTREAL.

SUCCESSOR TO  
PAXTON, TATE & CO.

Winnipeg Machinery & Supply Co.  
Western Selling Agents, Winnipeg.