

MUNICIPAL ENGINEERS, CONTRACTORS, AND MATERIALS.

Fire Bricks and Cement

DRAIN AND WATER PIPES
SANITARY EARTHENWARE
LONDON PORTLAND CEMENT
GUARANTEED GENUINE.
Paving and Scorla Bricks for Stables,
Sidewalks, Yards, etc.
Large quantities on hand and to arrive. We handle
only the best quality. Prices lower than ever.

F. HYDE & CO.
31 Wellington Street, MONTREAL,
Sole Agents for
THE "GRAHTRYX" SMOKE TEST AND
DISINFECTING MACHINE.

STEAM AND POWER

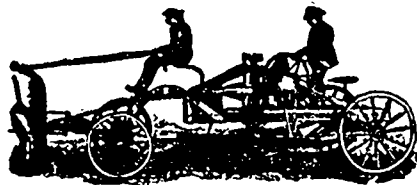
FOR ALL DUTIES



NORTHEY CO.
LTD.

Toronto
Ont.

THE COPP BROS. CO., (LIMITED)



The only Manufacturers in Canada and Sole Owners
of the Canadian Patents of the American
CHAMPION ROAD MACHINES
CHAMPION ROCK CRUSHER
CHAMPION SGEEL ROAD ROLLER
Catalogues Free. Correspondence Solicited
ADDRESS: HAMILTON, ONT.
COPP BROS. CO.

HAMILTON AND TORONTO SEWER PIPE CO.



— FOR —
SEWERS,
CULVERTS,
AND
WATER PIPES.
INVERTS
Fire Brick Sowers

Write for Discounts.

HEAD OFFICE AND FACTORY: HAMILTON, CANADA.

Drummond McCall Pipe Foundry Company,

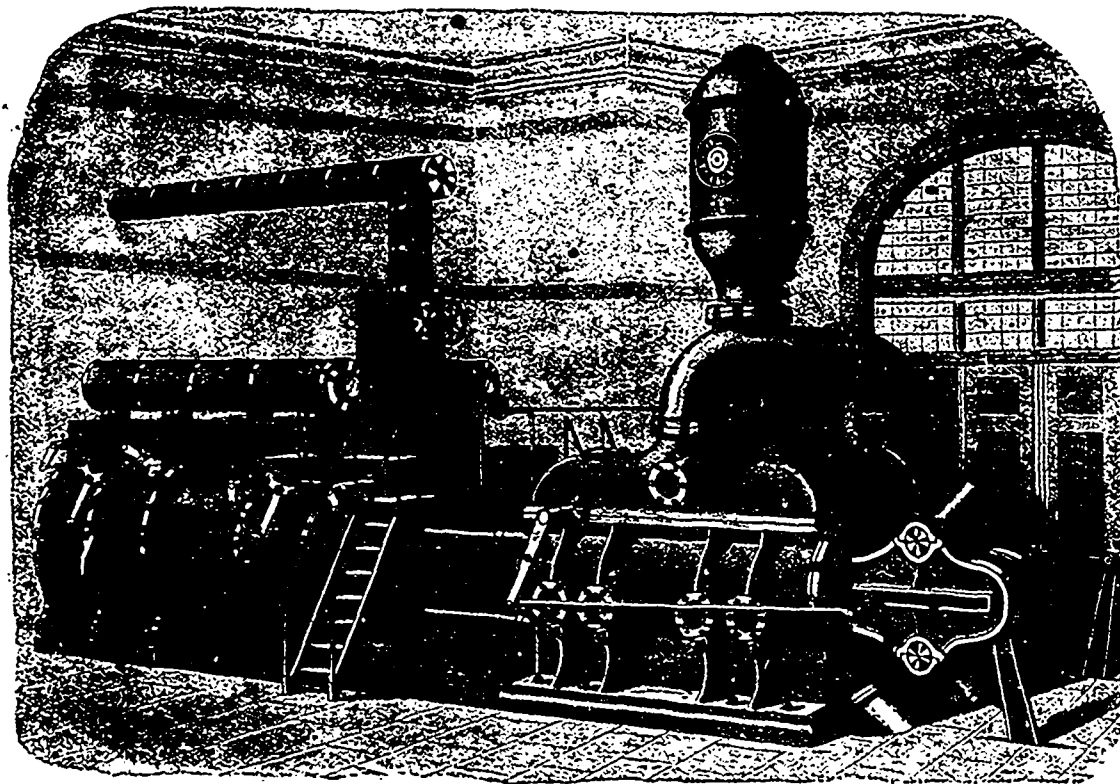
MONTREAL
MANUFACTURERS OF

CAST IRON WATER AND GAS PIPES

WORKS: LACHINE, QUE.

PRICES ON APPLICATION.

Municipal Officers, Contractors and others are requested to mention the CONTRACT RECORD
when corresponding with advertisers.



JOHN McDOUGALL

Galedonian Iron Works

OFFICE:

Corner William and Selgneurs Sts., MONTREAL.

Agents in Canada for the

Famous Worthington Pumps

Hydraulic Machinery, Condensers

and Waterworks Supplies

WATER METERS and METERS FOR ALL SERVICES

MANUFACTURERS OF

Machinery for Electrical Work, etc., etc.

Boilers, Engines, Forgings, Girders, Castings.

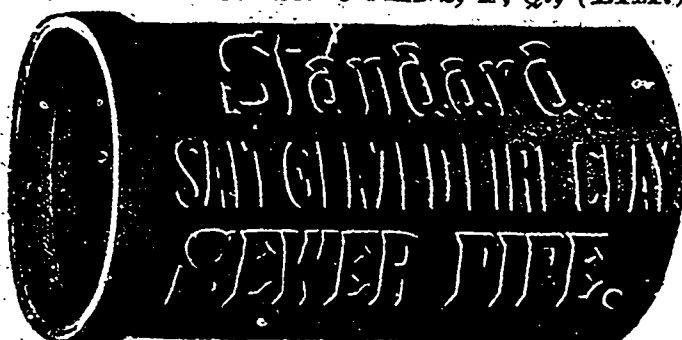
Shafts, Pulleys, Gears, Bearings, etc.

CRAIG, McARTHUR & CO., Toronto

Sub-Agents in Ontario.

THE STANDARD DRAIN PIPE CO.

OF ST. JOHNS, P. Q., (LIM.)



Manufacturers of
Salt-Glazed
Vitrified

**SEWER
PIPES**

Double Strength
Railway Cul-
vert Pipes,
Inverts, Vents,

AND ALL KINDS OF FIRE CLAY GOODS.

CANADA PIPE AND FOUNDRY CO. . . .

MANUFACTURERS OF

. . . . **Cast Iron Pipes and Special Castings**

Works: MONTREAL AND ST. HENRI, QUE.

CORRESPONDENCE SOLICITED.

THE G. & J. BROWN MFG. CO.

Railway and Contractors' Plant.

BRIDGE BUILDERS

BELLEVILLE, ONT.