

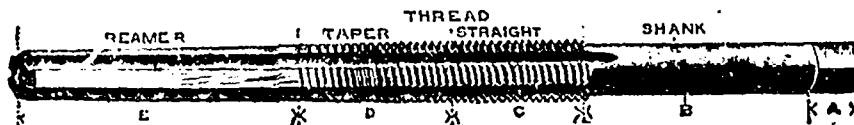


WE MANUFACTURE

STAY BOLT TAPS, all diameters and lengths up to 94 inches.
SPINDLE STAY BOLT TAPS and TAPS for Screw
Machines, and TAPS for all uses.

Regular and Full Mounted Reece and Derby Plates, Bicycle
and Machinists' Plates, etc., etc.

BUTTERFIELD & CO.,
Rock Island, Que.



Canadian White Company, Limited

SOVEREIGN BANK BUILDING, - MONTREAL, CANADA

ENGINEERS and CONTRACTORS

- FOR -

Steam and Electric Railroads; Electric Light and Power Plants; Building Construction;
Water and Gas Works; Docks, Harbor Works, etc., etc.

WINNIPEG OFFICE: Bank of British North America Building

CORRESPONDENTS

J. G. WHITE & COMPANY, INC.,
New York City.

J. G. WHITE & COMPANY, LIMITED
London, England.

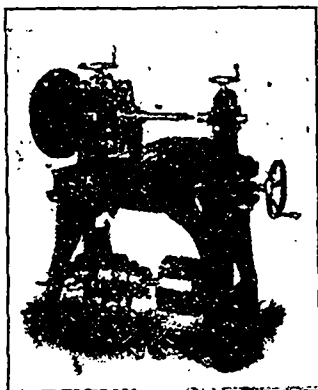
WARING-WHITE BUILDING CO.,
London, England.

STRENGTH

POWER

RIGIDITY

PRACTICAL



NEW MODEL No. 7—Plain Horizontal Mill

This machine is built to meet the increasing demand for a powerful miller for general manufacturing purposes, and embodies many improvements in power, stability and convenience. It is especially adapted to the manufacture of gun, sewing machine, typewriter and electrical work, bicycle and automobile parts. Write for catalogue. It will pay you.

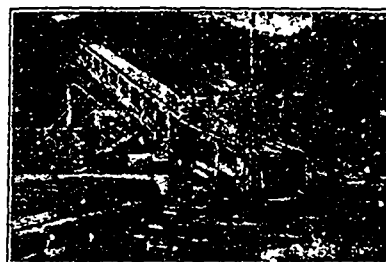
BECKER-BRAINARD MILLING MACHINE CO.,
HYDE PARK, MASS., U.S.A.

Branch Office: THE BOURSE, - - PHILADELPHIA, PA.

A. R. WILLIAMS MACHINERY CO., - Toronto, Can.
Canadian Agents.

JEFFREY APRON CONVEYER

With Reversible Drive Connections Permits
Carrier to Run in Either Direction



For Handling

**Grain, Cotton Bales, Barrels and
General Merchandise**

OTHER ELEVATING, CONVEYING SPECIALTIES

Illustrated in Chain Catalogue No. 72A. Mailed Free.

CORRESPONDENCE SOLICITED

THE JEFFREY MFG. COMPANY
COLUMBUS, OHIO, U.S.A.

NEW YORK CHICAGO BOSTON ST. LOUIS DENVER

Toronto Agents—A. R. WILLIAMS MACHINERY CO.
Montreal " —WILLIAMS & WILSON.