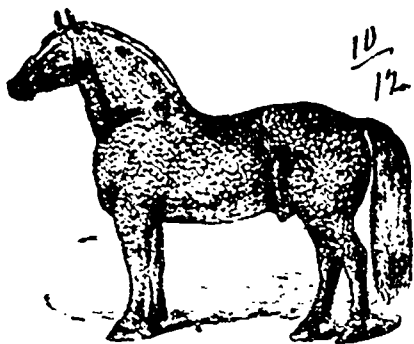


## ISLAND HOME Stock Farm,

Grosse Ile, Wayne Co., Mich.  
SAVAGE & FARNUM, PROPRIETORS



Patrol No. 220 (11/7)

— IMPORTED —

### Percheron Horses.

All stock selected from the get of sires and dams of established reputation and registered in the French and American stud books.

#### ISLAND HOME

Is beautifully situated at the head of Grosse Ile in the Detroit River, ten miles below the City, and is accessible by railroad and steamboat. Visitors not familiar with the location may call at city office, 55 Campau Building, and an escort will accompany them to the farm. Send for catalogue, free by mail. Address, SAVAGE & FARNUM, Detroit, Mich.

The Most Extensive Pure Bred  
Live Stock Establishment  
in the World.

New Importations  
Constantly Arriving.



Pure Analysis  
Excellent and  
Choice Breeding

Clydesdale Horses, Percheron-Nor-  
man Horses, English Draft Horses,  
Trotting-Bred Roadsters, Imported  
French Coaches, Cleveland Bays  
and Shetland Ponies, Holstein and  
Devon Cattle.

No further evidence is needed of the usual  
CARE with which our stock has been selected  
than the fact that the HUNDREDS of  
animals imported and sold by us during a  
career of ten years, every one, we believe,  
including all kinds and all breeds, is now  
alive and doing well, with the exception of  
only one (see sale list) and that no  
other establishment in America can ap-  
proach such a showing for the length of  
time and the large number of animals.

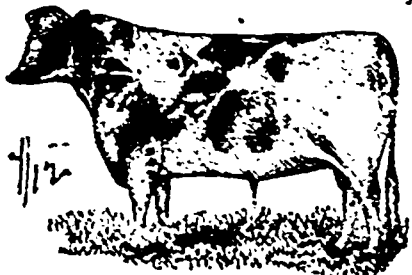
No careful and judicious person will fail to  
well consider this important fact, in mak-  
ing his purchases. We invite critical inspec-  
tion of our stock and careful comparison with that  
of any other establishment.

PRICES LOW! TERMS EASY! Visitors  
Welcome. Correspondence Solicited. Circulars  
Free.

### POWELL BROTHERS.

Springboro, Crawford Co., Pa.

## MAPLE GROVE FARM,



S. SHUNK, Jr.,  
EDGELEY, P. O., ONT.

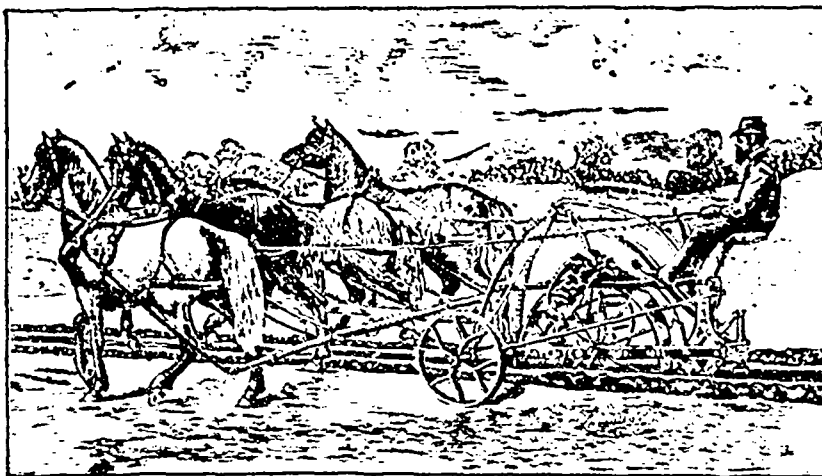
RAISER OF THOROUGHBRED

## HOLSTEIN CATTLE.

The herd consists of Four Imported Heifers  
and One Partridge Bull. Lady Mel has  
dropped a fine S. C. This Heifer took First  
Prize in Holland. Milk record 36 lbs. per day.  
Heifer Jeanette dropped a C. This herd  
was imported by R. R. Lord & Son, Cincinnati,  
N. Y., with a view to secure only the best that  
could be got. Stock for sale, visitors welcome.  
For particulars, address as above.

2 Miles from Thornhill Station,  
N. & N.-W. R. R.

Prof. Lewis' Magic Sulphur Soap is  
highly recommended for all humors and  
skin diseases.

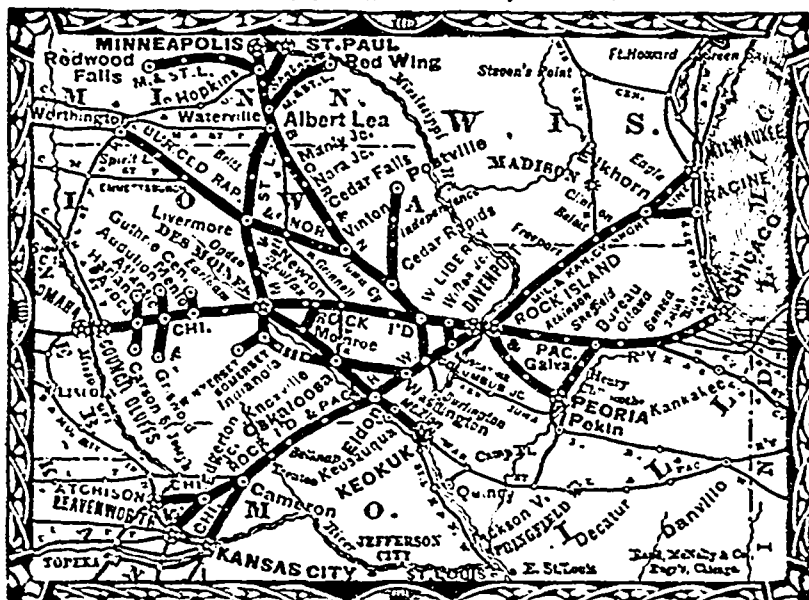


## THE ELEVATOR DITCHING MACHINE FOR UNDERDRAINING.

One man with The Elevator Ditching Machine can do more work than 30 men with spades.  
MANUFACTURED BY WM. RENNIE, TORONTO, ONT.

## A MAN

WHO IS UNAQUAINTED WITH THE GEOGRAPHY OF THIS COUNTRY, WILL  
SEE BY EXAMINING THIS MAP, THAT THE



## CHICAGO, ROCK ISLAND & PACIFIC R'y,

Being the Great Central Line, affords to travelers, by reason of its unrivaled geo-  
graphical position, the shortest and best route between the East, Northeast and  
Southeast, and the West, Northwest and Southwest.

It is literally and strictly true, that its connections are all of the principal lines  
of road between the Atlantic and the Pacific.

By its main line and branches it reaches Chicago, Joliet, Peoria, Ottawa,  
La Salle, Coneseo, Moline and Rock Island, in Illinois; Davenport, Muscatine,  
Washington, Keokuk, Knoxville, Oskaloosa, Fairfield, Des Moines, West Liberty,  
Iowa City, Atlantic, Aroca, Audubon, Harlan, Guthrie Center and Council Bluffs,  
in Iowa; Callatin, Tronton, Cameron and Kansas City, in Missouri, and Leaven-  
worth and Atchison in Kansas, and the hundreds of cities, villages and towns  
intermediate. The

## THE GREAT ROCK ISLAND ROUTE,

As it is familiarly called, offers to travelers all the advantages and comforts  
incident to a smooth track, safe bridges, Union Depots at all connecting points.  
Fast Express Trains, composed of COMMODIOUS, WELL VENTILATED, WELL  
HEATED, FINELY UPHOLSTERED and ELEGANT DAY COACHES; a line of the  
MOST MAGNIFICENT HORTON RECLINING CHAIR CARS ever built; PULLMAN'S  
latest designed and handsomest PALACE SLEEPING CARS, and DINING CARS  
that are acknowledged by press and people to be the FINEST RUN UPON ANY  
ROAD IN THE COUNTRY, and in which superior meals are served to travelers at  
the low rate of SEVENTY-FIVE CENTS EACH.

THREE TRAINS each way between CHICAGO and the MISSOURI RIVER.  
TWO TRAINS each way between CHICAGO and MINNEAPOLIS and ST. PAUL,  
via the famous

## ALBERT LEA ROUTE.

A New and Direct Line, via Seneca and Kankakee, has recently been opened,  
between Nowport News, Richmond, Cincinnati, Indianapolis and La Fayette,  
and Council Bluffs, St. Paul, Minneapolis and intermediate points.

All Through Passengers carried on Fast Express Trains.

For more detailed information, see Maps and Folders, which may be obtained, as  
well as Tickets, at all principal Ticket Offices in the United States and Canada, or of

R. R. CABLE, E. ST. JOHN,  
Pres't & Gen'l Manager, Gen'l Tkt't & Pass'r Ag't,  
CHICAGO.

## FARMERS! ATTENTION! — FARMERS!

GIVE YOUR SONS A COURSE AT THE  
LONDON BUSINESS UNIVERSITY  
And a Telegraphic and a Phonographic Institute

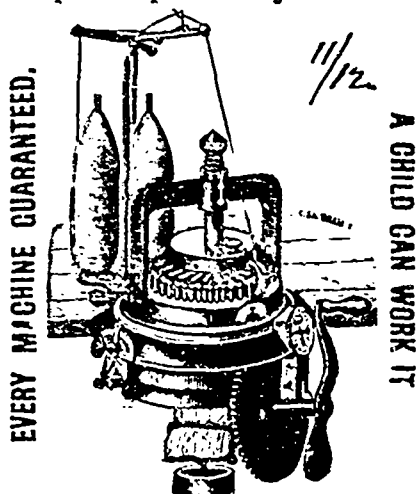
COURSE. — Comprehensive and Practical Instruction, Rapid and Thorough. Rooms — Cen-  
trally and pleasantly located and elegantly fitted up.  
For Circulars containing full particulars, Address W. N. TERRY, Principal,  
Box 409, London.

## THE "ECLIPSE"

Is the only perfect family

## KNITTING MACHINE

Simple! Rapid! Easily Worked!



### An Eclipse Knitting Machine

will pay in any family. After supplying the  
family requirements goods can be made for  
neighbours or the trade. A more profitable  
use of spare hours could hardly be found. A  
BOY OR GIRL CAN EARN FROM  
\$1.50 TO \$2.00 a day on the "Eclipse."  
MERCHANTS can manufacture all the  
Hosiery, Scarfs, Mitts, Ties, etc., required in  
their business during dull seasons and thus  
keep their clerks employed. FARMERS  
can manufacture their own yarn into various  
kinds of goods and realize 400 per cent.  
more on the wool they raise. The only per-  
fect Knitting Machine is one that has a  
simple and reliable ribber. The ribber attach-  
ment of the "Eclipse" differs in almost every  
respect from others, and is pronounced perfect  
by competent judges. The "Eclipse" is the  
only Machine suitable for Family Use.  
Toronto Knitting Machine Co.,  
115 BAY STREET, TORONTO

THE LINE SELECTED BY THE U. S. GOV'T  
TO CARRY THE FAST MAIL.

## Burlington Route C.B. & Q.R.R.

It is the only line with its own track from

### CHICAGO TO DENVER,

Either by way of Omaha, Pacific Junction, St. Joseph,  
Atchison or Kansas City.

It connects in Union Depots with through trains from  
NEW YORK, PHILADELPHIA, BOSTON  
and all Eastern points. It is the principal line to

### SAN FRANCISCO, PORTLAND & CITY OF MEXICO

It traverses all of the six great States of ILLINOIS,  
IOWA, MISSOURI, NEBRASKA, KANSAS, COLORADO  
with branch lines to all their important cities and  
towns.

From CHICAGO, PEORIA or ST. LOUIS, it runs  
every day in the year from one to three elegantly  
equipped through trains over its own tracks between  
Chicago and Denver.

Chicago and Omaha,

Chicago and Council Bluffs,

Chicago and St. Joseph,

Chicago and Atchison,

Chicago and Kansas City, 6/12

Chicago and Topeka,

Chicago and Cedar Rapids,

Chicago and Sioux City,

Peoria and Council Bluffs,

Peoria and Kansas City,

St. Louis and Omaha,

St. Louis and St. Paul,

Kansas City and Denver,

Kansas City and St. Paul,

Kansas City and Omaha.

For all points in Northwest, West and Southwest.

Its equipment is complete and first class in every  
particular, and at all important points interlocking  
Switches and Signals are used, thus insuring com-  
fort and safety.

For Tickets, Rates, General Information, etc.,  
regarding the Burlington Route, call on any Ticket  
Agent in the United States or Canada, or address

T. J. POTTER, 1st V.P. & Gen. Mgr., Chicago.

HENRY R. STONE, Asst. Gen. Mgr., Chicago.

PERCEVAL LOWELL, Gen. Pass. Ag't., Chicago.

## How To Build MODERN LOW-COST HOUSES.

Just published. A large book, giving  
plans, views, descriptions and val-  
ues of 60 different houses, \$200  
up to \$2,500, for all climates. No  
complete book of the kind, and  
costs \$4.00. Price of book, \$2.00.  
Send post-paid \$2.00 to  
BUILDING ASSOCIATION,  
24 Beekman St., (Box 200), N. Y.