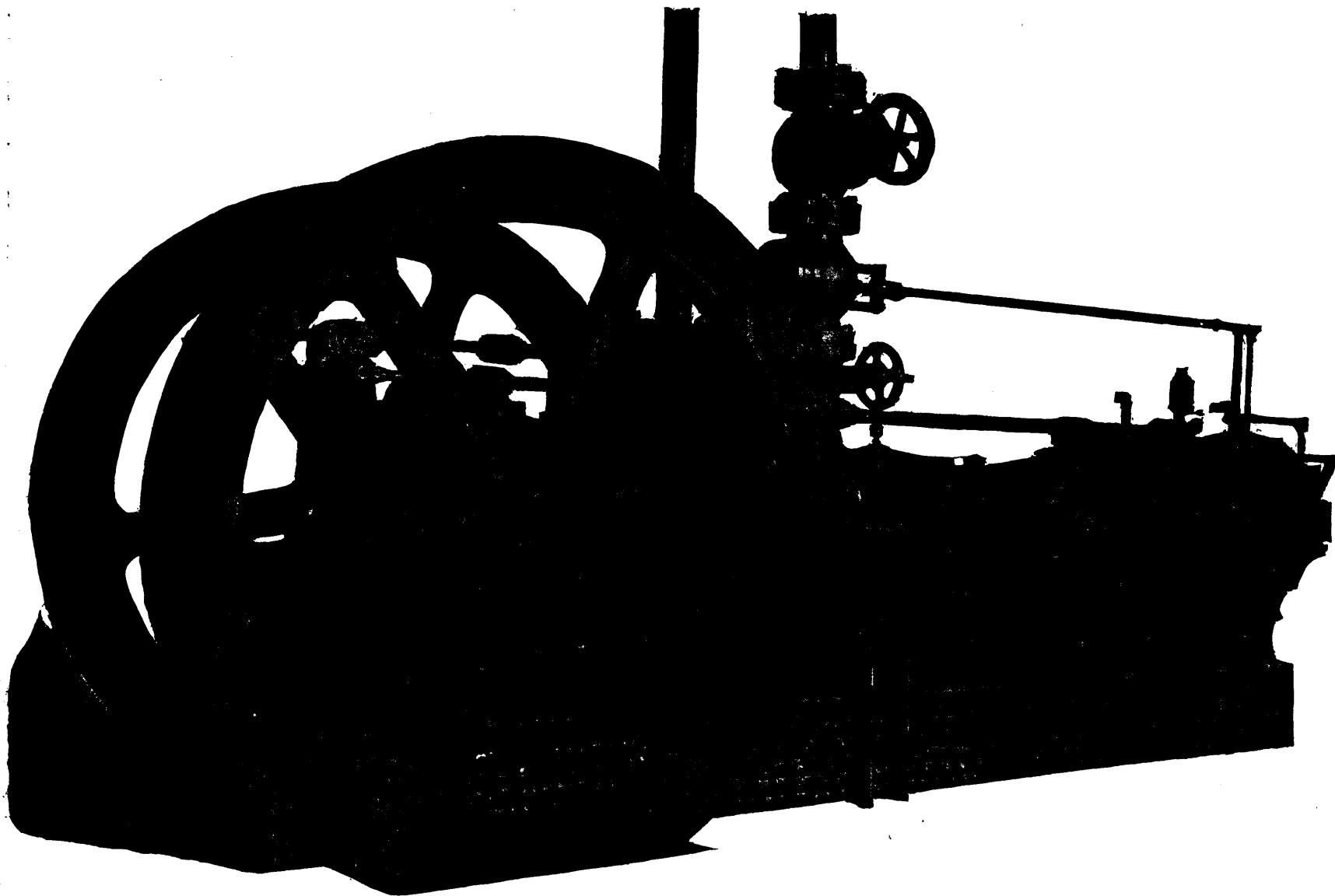


Other important improvements in Mining Machinery will be illustrated on this page in the March and April issues.



SERGEANT'S PISTON INLET COLD-AIR COMPRESSOR.

For full description see page 50 of this issue.

Having single tubular inlet, which disposes of poppet valves, cages, and springs; minimum clearance spaces; greater water jacketing area than any other; large fly wheels; automatic device for unloading engine; and many other improvements.

Send for illustrations and particulars of this, as well as of Rock Drills, Boilers, Hoists, in fact every Mining requisite.

ADDRESS YOUR ENQUIRY TO

INGERSOLL ROCK DRILL COMPANY OF CANADA.

204 St. James St., or P. O. Box 1942, Montreal.