

# A DEMON OF WATER AND A DEVIL OF FIRE

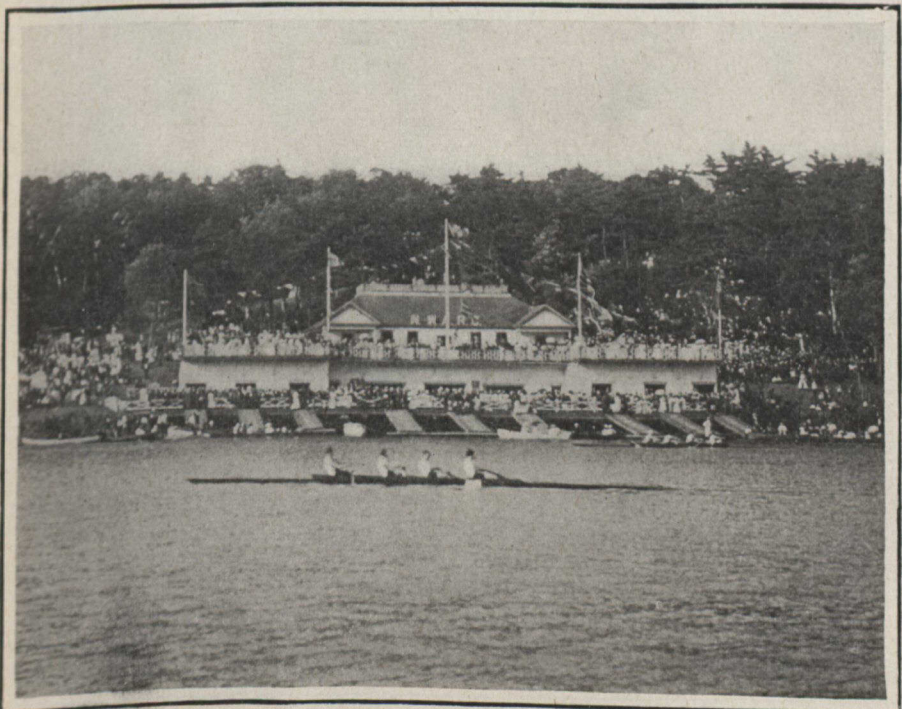


The Battleship-Cruiser "Lion"—the mystery ship of the British Navy was launched recently, at Devonport. The "Lion" is more powerful than the most powerful Dreadnought. When completed it will displace 26,360 tons, nearly half as large again as the original Dreadnought which displaces only 17,900 tons. Her total cost will be over ten million dollars.



The Fire which destroyed a portion of the International Exposition at Brussels, Belgium. This picture shows the German Pavilion and the Cafe Metropole in course of destruction. Unlike the buildings at the Toronto Exhibition, which are practically fire-proof, these buildings were of the flimsy construction usual with temporary Exhibition Buildings.

## A RECENT REGATTA IN HALIFAX HARBOUR



The North-West Arm Rowing Club's Home and its thousands of visitors.



A portion of the crowd of 12,000 people who witnessed the Regatta.