

A Book About Money

How to get it. How to hold on to it, and how to make it work for you, will be sent free to everyone who writes for a copy and mentions this paper.

It's a book that has started many a man and woman on the road to owning sound, interest-paying investments.

Just write and say, "Send me your book about Profits from Savings."
Address Dept.: 35



**STANDARD RELIANCE
MORTGAGE CORPORATION**
Head Office, 82-88 King St. E. Toronto

Branches: Ayr, Brockville, Chatham, Elmira, New Hamburg

THE CANADIAN BANK OF COMMERCE

SIR EDMUND WALKER, C.V.O., LL.D., D.C.L., President.
JOHN AIRD, General Manager. H. V. F. JONES, Ass't. General Manager.

CAPITAL, \$15,000,000 RESERVE FUND, \$13,500,000

SAVINGS BANK ACCOUNTS

Interest at the current rate is allowed on all deposits of \$1.00 and upwards. Careful attention is given to every account. Small accounts are welcomed. Accounts may be opened and operated by mail.

Accounts may be opened in the names of two or more persons, withdrawals to be made by any one of them or by the survivor.

THE INDEPENDENT ORDER OF FORESTERS FURNISHES A COMPLETE SYSTEM OF INSURANCE

Policies issued by the Society are for the protection of your family, and cannot be bought, sold, or pledged.

Benefits are payable to the Beneficiary in case of death, or to the member in case of his total disability, or to the member on attaining seventy years of age.

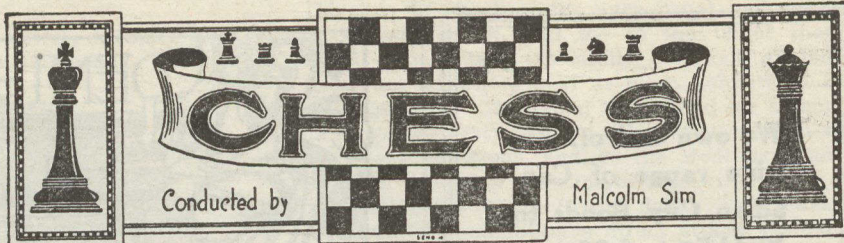
Policies issued from \$500 to \$5,000.

TOTAL BENEFITS PAID, 49 MILLION DOLLARS.

For further information and literature apply to

FRED J. DARCH, S.S. E. G. STEVENSON, S.C.R.
Temple Buildings, TORONTO.

SNAP
THE GREAT
Hand Cleaner 15c.



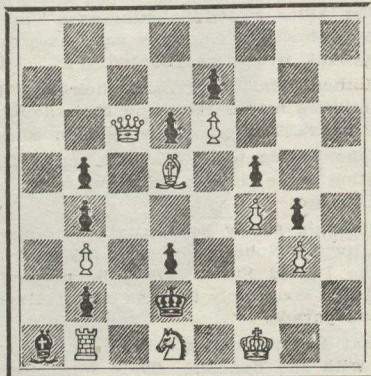
Address all correspondence to the Chess Editor, Canadian Courier, 30 Grant St., Toronto.

PROBLEM NO. 49, by Duncan Pirnie.

"The Hesitation Bristol."

(Specially contributed to the "Courier.")

Black.—Ten Pieces.



White.—Nine Pieces.

White to play and mate in two.

Problem No. 50, by W. I. Kennard.
(A Task-Problem.)

Half-yearly Prize, American Chess Bulletin.

White: K at KKt7; Q at KKtsq; Rs at QB6 and K5; Bs at QR6 and KB6; Kts at QB4 and Q8; Ps at QKt2, K6 and KB2. Black: K at Q5; Q at QKtsq; R at KB6; B at QR2; Kts at QRsq and KR7; Ps at QB4, Q2 and Q6.

White mates in two.

Solver's Ladder.

First Week.

	No. 43.	No. 44.	Total.
J. Kay	2	3	22
R. G. Hunter	2	0	21
F. Coombs	2	0	6
R. A. Leduc	2	3	5
W. J. Faulkner	2	3	5

Mr. Faulkner by heading the ladder in last issue secured the monthly book prize, upon which we have to congratulate him.

To Correspondents.

(R.A.L.) Thanks for solutions. No. 46 is O.K. as printed and solvable. Errors in publication are pointed out in time. (J.M.) Pleased to get solutions once more. (W.J.F.) Thanks for problems. Will examine. Mr. C. A. Brown, Box 2034, North Bay, would like a correspondence game with one of our readers.

SOLUTIONS.

Problem No. 45, by W. R. Todd.

1. B-Q4, KxB; 2. R-R4 mate.
1., RxB; 2. Kt-Kt2 mate.
1., Kt(B6)xB; 2. KtxQP mate.
1., Kt(Q7)xB; 2. R-B3 mate.
1., Bfxb; 2. Q-KB7 mate.
1., QPxB; 2. BxP mate.
1., threat; 2. QxP mate.

Problem No. 46, by L. Vetesnik.

1. Kt-Q2, KxB; 2. Q-KKt6ch, K moves;
3. Q-K4 or Kt5 mate.
1., KtxKt; 2. B-Q6ch! K moves;
3. Q-B5 or KKt6 mate.
1., K-Q4; 2. Q-Kt2ch, K moves;
3. Q-K4 mate.
1., threat; 2. Q-K3ch, K moves;
3. Q-K4 mate.

An Amusing Battery Mate.

By W. A. Skinkman.

White: K at QBsq; B at KR8; Kt at KKt7; P at KB2. Black: K at QR8; R at QKt7; B at QKt8; Ps at QR6, QR7 and QB7. Mate in twelve. (1. P-B3, R-Ktsq; 2. Kt-K8ch, R-Kt7; 3. KtB6; R-Ktsq; 4. B-Kt7, R-Kt7!; 5. P-B4, R-Kt2; 6. Kt-Q7ch, R-Kt7; 7. Kt-K5, R-Kt2; 8. B-B6, R-Kt7!; 9. P-B5, R-Kt3; 10. Kt-B6ch, R-Kt7; 11. Kt-Q4, R Moves; 12. Kt Mates.)

CHESS BY CORRESPONDENCE.

The following brilliant parties occurred in the early stage of a Hampe-Allgaier gambit correspondence tournament, conducted by the Los Angeles Times. For the score of the game we are indebted to "The Chess Correspondent," a pamphlet devoted to this branch of chess, and issued bi-monthly by Dr. W. C. Browne, Director of the Chess by Mail Correspondence Bureau. The notes are our own.

Hampe-Allgaier Gambit.

White.

1. P-K4
2. Kt-QB3
3. P-KB4
4. Kt-KB3
5. P-KR4
6. Kt-KKt5

Black.

1. V. Asher.
1. P-K4
2. Kt-QB3
3. PxB
4. P-KKt4
5. P-Kt5
6. P-KR3 (a)

7. KtxP
8. P-Q4
9. BxP (b)
10. B-K2
11. Castles (d)
12. PxB
13. PxB
14. BxBP
15. R-Ktsq
16. R-Kt5
17. B-KB4 (g)
18. B-Q3 (i)
19. BxQ
20. K-R2
21. B-K5ch (l)
22. P-Kt3
23. Q-Ksq
24. QxR
25. B-B4
26. QxB (n)
27. K-Kt sq (o)
28. K-Bsq
29. K-Ksq
30. K-Qsq

(a) 6., P-Q3 is perhaps the best defence. If 7. B-B4, then 7., Kt-K4; 8. B-Kt3, P-KR3; 9. P-Q4, PxB; 10. PxB, PxB; 11. BxPch, K-K2; works out to Black's advantage.

(b) 9. PxB, QKt-K2 is the usual continuation. The text-move turns the opening into a variation of the Algaier proper, if anything, favorable to Black.

(c) In conjunction with the early development of Black's Queen's Knight, this pin comes in very effectively.

(d) In the more favorable variation the attack is maintained by means of the stereotyped B-K5, Black's Queen's Knight, of course, being undeveloped.

(e) KtxKP was preferable. The text-move gives White a strong passed Pawn.

(f) Tempting 16. RxP, for then would follow 16., KtxP. If then 17. QxKt, QxR; 18. B-K5, Q-Kt3! and Black retains the piece ahead.

(g) White now threatens a powerful control by 18. B-Q3, followed, as opportunity offers by 19. RxP, or 19. R-Ksq.

(h) An unsound sacrifice, but which merits a cleverly conceived pitfall.

(i) The accommodating error. White calculated to follow with 19. RxP. Instead, 18. PxB should have been played. If 18., BxR; then 19. BxB, QR-Bsq; 20. R-B2, (if 20. B-R4, then 20., R-B5), P-R3; 21. B-Bsq! R-B6; 22. B-K5, P-KR4!; 23. B-Q3 with a promising King-side attack and a passed Pawn plus, to offset the exchange minus. The text-move brings Black's brilliant and comprehensive scheme into the limelight.

(j) Best, as he emerges with Rook and two Knights for the Queen.

(k) Not 19., BxR, on account of 20. QxKt, with a winning position.

(l) There is no satisfactory defence. If 21. P-Kt3, then 21., QR-Qsq; 22. Q-Ksq, KtxB; 23. RxKt (if 23. QxKt, then 23., R-Q7ch; 24. K moves, Kt-R6ch or B-B3 accordingly), R-Q7ch; 24. K-Ktsq, RxR; 25. P-R, B-K7 and wins.

(m) If 24., Kt-Q5, then 25. P-R5ch and mates in two.

(n) If 26. QxKt, then 26., B-B3 would win. After the text-move Black wins the Queen by force.

(o) If 27. K-Rsq, mate in two follows.

(p) The finish has a touch of humour. The Black King must go to the centre to avoid mate. An interesting game.

We failed to point out that the notes to the game German v. Sergeant, in last issue, were abridged from the "Field."

END GAME NO. 8.

By B. Horwitz.

White: K at Q6; B at QKt7 and QB7; Kt at QKt4. Black: K at KR8; Q at KR6; R at KR7; Ps at KKt5, KKt6, KKt7 and KR5. White to play and win.

Solution.

1. Kt-B2; 2. B-Kt6ch, K-R8!; 3. K-B5; 4. K-Q5ch; 5. K-Q4; 6. K-K4ch; 7. K-K3; 8. K-Q2ch; 9. Kt-Q4; 10. Kt-K6ch; 11. Kt-B5; 12. Kt-K4ch; 13. B-B5, P-Kt8ch; 14. Kt-B2 mate.

Beach Club Banquet.

The Toronto Beach Chess Club held a Banquet at the Walker House, Wednesday evening, June 14, when the awards were presented in the Beach Tournaments.

Mr. J. T. Wilkes, who is also associated with the Toronto Chess Club, carried both the Championship and the Handicap Tournaments, and received from the Rev. F. M. Dean, who presided, the Snell and Boyle Shields, emblematic of the two competitions respectively. Curiously, Mr. W. E. Cawell holds second place in both Tournaments, and received the two silver medals in recognition.

Blindfold Play by Kostic.

In a simultaneous blindfold exhibition against twenty strong players at the Manhattan Chess, recently, Boris Kostic came through with the remarkable score of nineteen wins and one draw. Kostic is a Serbian by race, a Hungarian by birth, and now settled in the States. At blindfold chess he is claimed to be the successor of the great Pillsbury.