

The Town of Port Perry

Port Perry at present contains about sixteen hundred people, and with the Prince Albert suburbs added, aggregates about two thousand. The town is situated on the west side of Scugog Lake, opposite Scugog Island, which forms a separate township, containing about ten thousand acres, and is fully settled with prosperous farmers. The Island contains an Indian reserve of 800 acres, on which is located a band of about forty Mississauga Indians.

The town is situated on ground inclining upward from the lake, rising to an elevation of 117 feet within a distance of three-fourths of a mile, in one of the finest agricultural and stock-raising districts in the Province. The highest elevation of the town is nearly 700 feet above Lake Ontario, Scugog being 568 feet above Ontario. The town is 49 miles from Toronto by rail via Whitby, and is noted as one of the most healthy towns in the Dominion. At such an altitude the air is always fresh, pure and invigorating, which makes the place a most pleasant one, summer or winter. The residential streets are embowered in shade trees, which form a wind brake in winter and a cool shade in the heat of summer, and add very materially to the beauty of the town.

Who can say Port Perry is not a most delightful place to live in having, as it has, so many local advantages. Situated on the shore of a beautiful lake, having a magnificent panoramic view of Scugog Island, forming an enchanting and beautiful scene of farm and hillside, not easily excelled. Residents of the town who have seen this panorama of nature every day for years fail to see it as strangers do when visiting the town. Strangers express themselves as delighted and surprised with the beauty of the town, the fine houses, the well-kept lawns,

fine stores, one Methodist church, one Presbyterian, a Baptist, an Episcopal, a Roman Catholic, and a Catholic Apostolic church. There is a first-class Public and High school, also telegraph and telephone services. Boats, during the season of navigation, can leave the docks at Port Perry, going as far east as Hastings on the river

Trent, via Peterborough, a distance of about 150 miles in an easterly direction, and north-westerly to Balsam Lake. On completion of the canal from there to Lake Simcoe the present year, boats can enter that lake, visiting Orillia, Barrie, Beaverton and Jackson's Point summer resorts; and on the final completion of the Trent canal vessels from here can go down the St. Lawrence to the sea, or west to the Upper Lakes, taking in all the cities of the lakes from Midland to Duluth, Chicago, Detroit or Cleveland.

MUNICIPAL GOVERNMENT IN MICHIGAN

The league of Michigan municipalities met recently in Detroit. The following resolutions were adopted:

Resolved. That the League of Michigan municipalities recommends to the coming Constitutional Convention the careful consideration of municipal government in this State to the end:

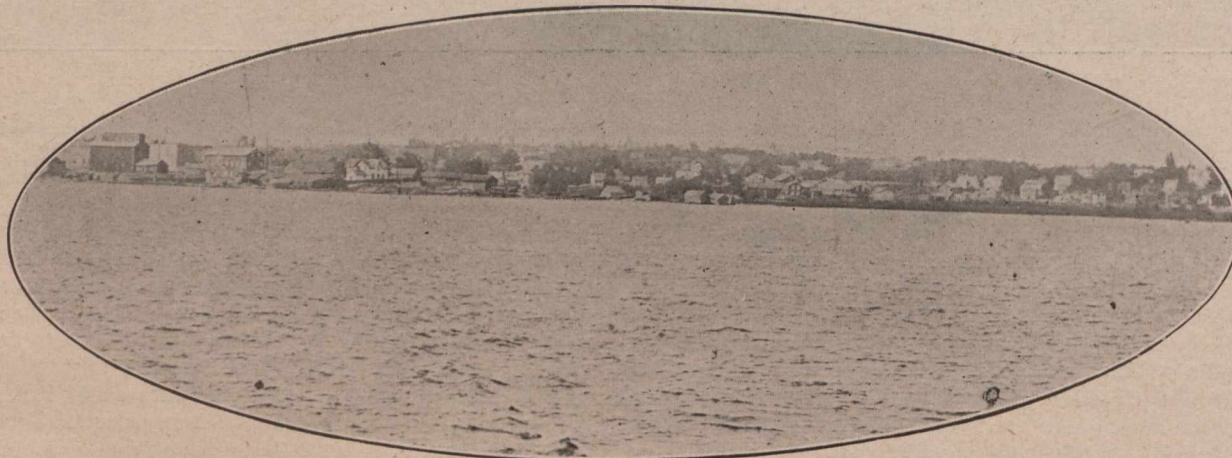
1. That the Legislature be relieved of the burden of considering special legislation for particular cities; and
2. That all the cities and villages in the State be granted adequate powers of local legislation, subject to limitations in the constitution and general laws of the State.

That the League and all cities which are members of this League use their best endeavors to secure in the new



W. H. HARRIS, B. A., L. L. B.
CLERK, VILLAGE OF PORT PERRY

Mr. Harris was born at Cleveland, Ohio, in 1869. He studied in Canada, graduating from the Toronto University in 1891, and after taking a legal course was called to the Bar in 1894. Mr. Harris came to Port Perry in 1901, and began the practice of his profession. The same year he was appointed clerk of the municipality, which position he holds to-day.



PORT PERRY FROM LAKE SCUGOG

the shade trees, the neat appearance of the town generally, its fine view of the Island, and its many other advantages.

The town possesses a municipal lighting and water-works system, good railway accommodation, good hotels,

constitution authority for municipal light and water plants to furnish light and water for commercial purposes.

That the League renew its endorsement of the proposed bill to establish a uniform system of accounting for counties, cities, and other local districts; and that a committee