



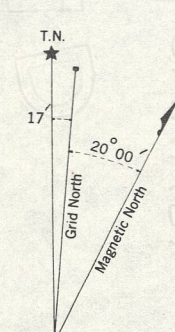
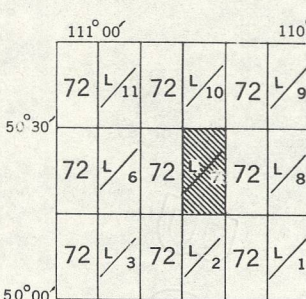
CANADA  
DEPARTMENT OF NATIONAL DEFENCE  
ARMY SURVEY ESTABLISHMENT

REFERENCE

- Roads:
  - hard surface, heavy duty ..... 3 or more lanes Part completed
  - hard surface, heavy duty ..... 2 lanes Route No.
  - hard surface, medium duty ..... 3 or more lanes 2 lanes
  - loose surface, graded and drained ..... 3 or more lanes Not less than 14 ft. wide
- Other Roads
  - Private Road ..... Floor condition
- Trail
  - Railway, double track ..... Station
  - single track ..... Stop Sidings
  - abandoned
  - narrow gauge or electric
- Bridge, underpass or overpass
- Boundaries, International
  - Provincial
  - County
  - Reservation, Indian
  - Military, Nat. or Prov. Parks, etc.
- Electric Power Line ..... on Steel Towers on Wood Poles
- Telephone, trunk route ..... on Steel Towers on Wood Poles
- Triangulation Station .....  $\Delta$
- Boundary of Survey Monument .....  $\square$
- Bench Mark .....  $\circ$  B.M.
- Spot Height, (in feet) ..... 357.1
- House Barn .....  $\text{---}$
- Buildings
  - Mill or Factory, small .....  $\text{---}$
  - School .....  $\text{---}$
  - Church .....  $\text{---}$
  - with conspicuous Tower or Spire .....  $\text{---}$
- Post Office ..... P
- Telephone Exchange ..... T
- Mine or Open Cut .....  $\text{---}$
- Cemetery or Churchyard .....  $\text{---}$
- Quarry .....  $\text{---}$
- Sand or Gravel Pit .....  $\text{---}$
- Cliff .....  $\text{---}$
- Cutting .....  $\text{---}$
- Embankment, Dump, etc. ....  $\text{---}$
- Lighthouse .....  $\text{---}$
- Wharf or Pier .....  $\text{---}$
- Foreshore Flats .....  $\text{---}$
- Swamp or Marsh .....  $\text{---}$
- Lake or Slough, non permanent .....  $\text{---}$
- Glacier or Snowfield .....  $\text{---}$
- Stream, intermittent .....  $\text{---}$
- Contours, elevation
  - 250
  - 500
  - 1000
  - depression

NOTE: Area devoid of forest cover

INDEX TO ADJOINING SHEETS



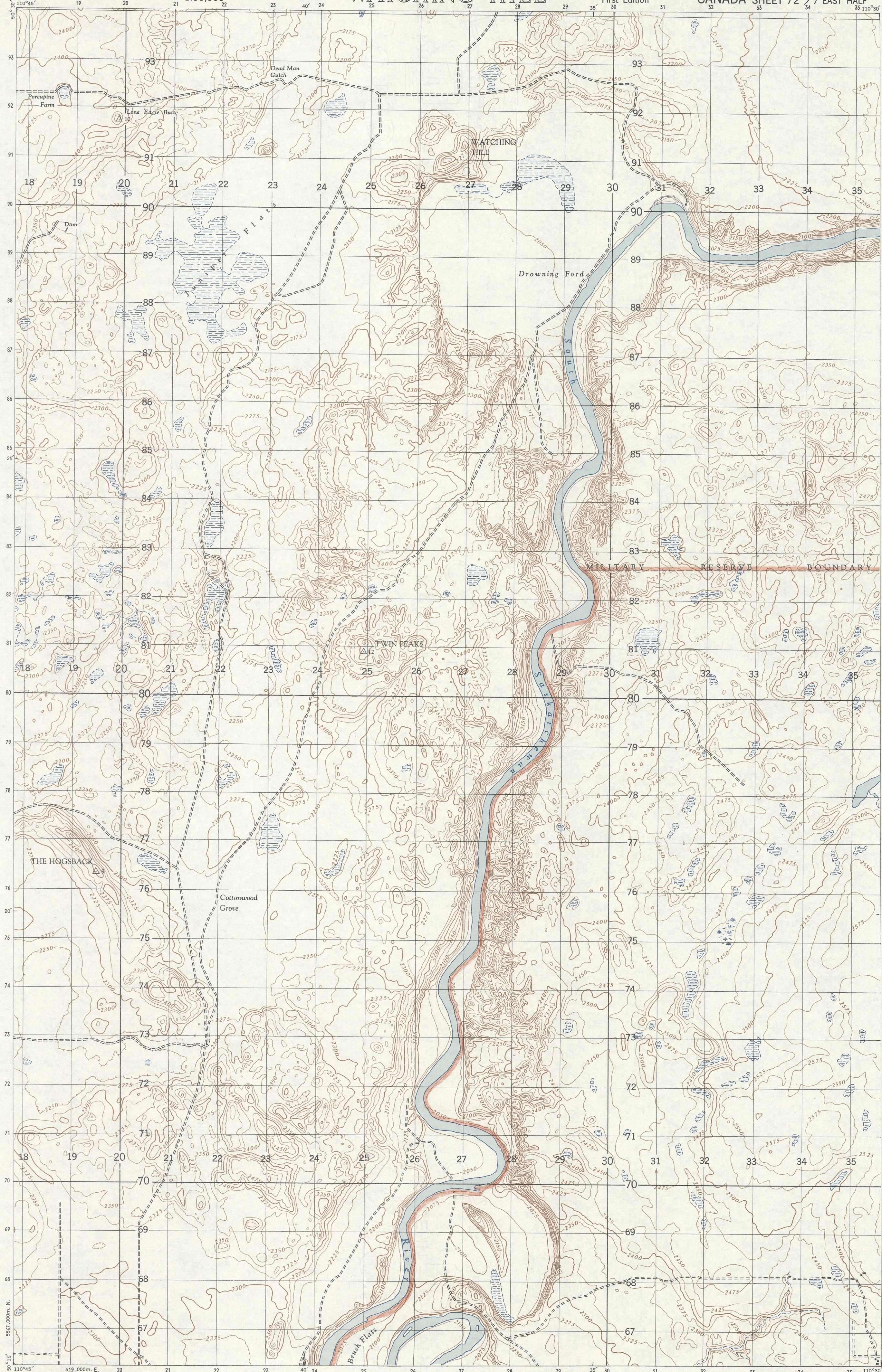
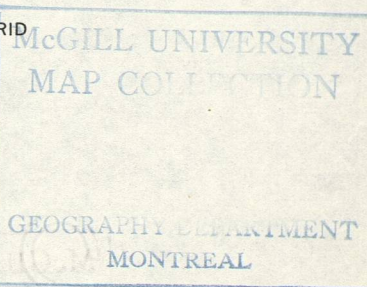
**TO GIVE GRID REFERENCE ON THIS SHEET**  
FIGURES. IGNORE THE SMALLER FIGURES PRINTED AROUND THE MARGIN OF THE MAP. THESE ARE FOR FINDING THE FULL COORDINATES. USE ONLY THE LARGER FIGURES PRINTED IN THE MARGIN OR ON THE FACE OF THE MAP. VIZ. 5 50

POINT Triangulation Station			
FOR STANDARD MILITARY GRID REFERENCE			
East	North	East	North
24	90	8	80
9	24	24	90
24	90	8	80
STANDARD MILITARY GRID REFERENCE: 249808 (To nearest 100 Metres)			
Nearest similar grid reference: 100,000 Metres (Approximately 63 Miles)			

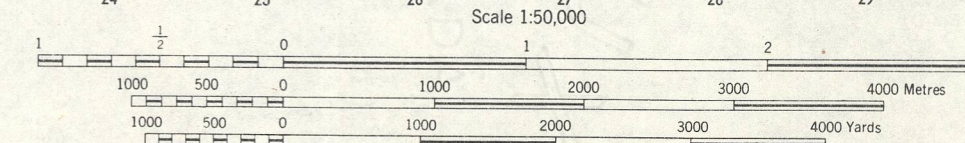
ONE THOUSAND METRE  
UNIVERSAL TRANSVERSE MERCATOR GRID  
ZONE 12

**WATCHING HILL**  
**72 1/7 EAST HALF**

FIRST EDITION  
1950



519,000m. E.  
Surveyed, compiled, drawn and printed by  
the Army Survey Est., R.C.E. 1949  
Aerial photography by R.C.A.F. 1947  
Published 1950



NOTE: Copies of this map required for official purposes may be obtained from the Army Survey Est., AHQ, Ottawa  
CONVERSION SCALE FOR ELEVATION

CONTOUR INTERVAL 25 FEET  
All Elevations in Feet above Mean Sea Level

SUPERSEDED EDITION