

Military users, refer to this map as: MAP 48 D/3 CARTE 48 D/3

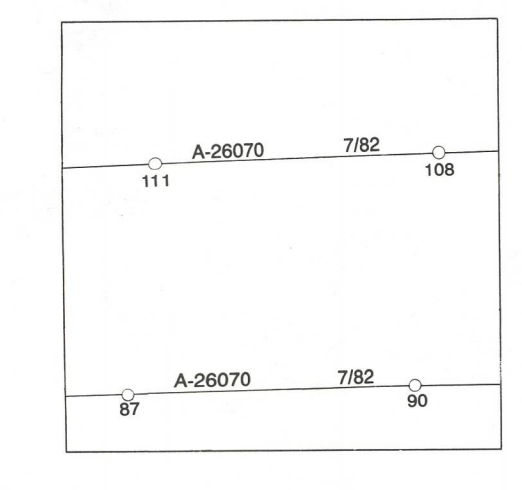


LEGEND - LEGENDE table with symbols and descriptions for various map features like roads, railways, and boundaries.

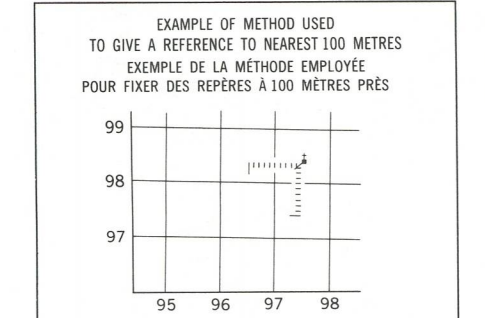
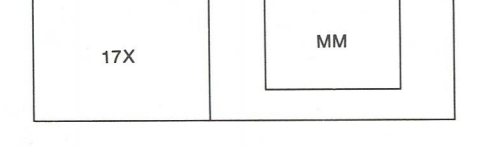
METRIC/MÉTRIQUE

METRIC/MÉTRIQUE

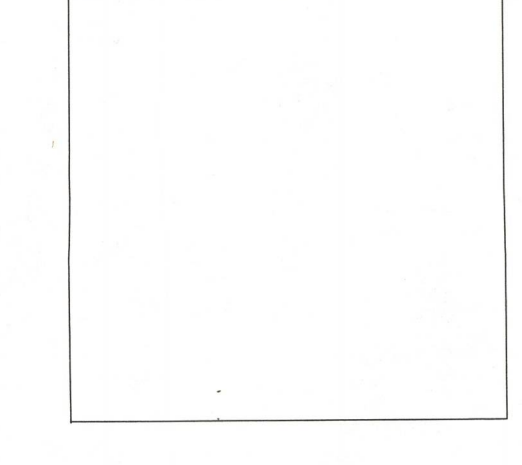
PHOTOGRAPHY PHOTOGRAPHIE



GRID ZONE DESIGNATION 17X



REVISION



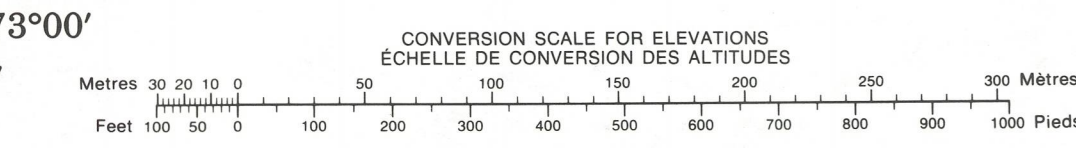
REFERENCE POINT CHURCH - ÉGLISE (see above) EASTING: Read number on grid line immediately to left of point. NORTHING: Read number on grid line immediately below point.

ONE THOUSAND METRE UNIVERSAL TRANSVERSE MERCATOR GRID

Table of map sheets: 48 D/5, 48 D/6, 48 D/7, 48 D/4, 48 D/3, 48 D/2, 48 A/13, 48 A/14, 48 A/15

THE 1985 MAGNETIC BEARING IS 62°44' (115 mils) WEST OF GRID NORTH. ANNUAL CHANGE DECREASING 43.7' GRID NORTH IS 1°26' (26 mils) WEST OF TRUE NORTH for centre of map.

THE MAGNETIC COMPASS IS LIKELY TO BE USELESS IN THIS AREA. LA BOUSSOLE SERA PROBABLEMENT INUTILE DANS CETTE RÉGION.



PRODUCED BY THE SURVEYS AND MAPPING BRANCH, DEPARTMENT OF ENERGY, MINES AND RESOURCES. OTTAWA, PUBLISHED IN 1985.

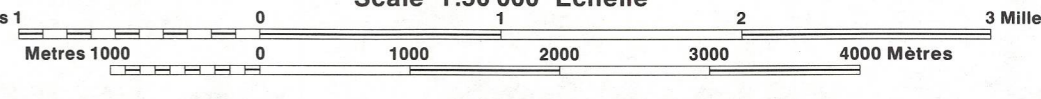
ELEVATIONS IN METRES ABOVE MEAN SEA LEVEL. CONTOUR INTERVAL, 20 METRES.

MILITARY SURVEY MOUNTAIN DISTRICT OF FRANKLIN

NORTHWEST TERRITORIES TERRITOIRES DU NORD-OUEST

ALTITUDES EN MÈTRES. ÉQUIDISTANCE DES COURBES. 20 MÈTRES.

PROJECTION TRANSVERSE DE MERCATOR



ÉTABLI PAR LA DIRECTION DES LÈVES ET DE LA CARTOGRAPHIE, MINISTÈRE DE L'ÉNERGIE, DES MINES ET DES RESSOURCES, OTTAWA, PUBLIÉE EN 1985.

POUR TOUT RENSEIGNEMENT CONCERNANT LES RÉPÈRES ET BORNES, ALTIMÉTRIQUES, S'ADRESSER AUX LÈVES GÉODÉSQUES, DIRECTION DES LÈVES ET DE LA CARTOGRAPHIE, OTTAWA.