

The Cream of Today's Selling Values at Simpson's

Footwear for Men, Women and Children at Less than Price of Half Soles

Women's \$1.99 to \$3.50 Boots, Tuesday 99c. All the big sizes sold out. In 14 styles of Women's Boots, button and lace styles; gunmetal calf, vic kid, patent calf and tan calf leathers; light, medium and heavy soles; Cuban military and common-sense heels; dull calf and vic kid uppers. 400 pairs. Sizes 2 1/2, 3, 3 1/2, 4. Regular \$1.99 to \$3.50. No mail or phone orders. Tuesday 99c.

1,000 pairs Women's Fall Boots, Tuesday 2-49.

Less Than Half Price for Men's Oxfords, at \$1.99, 240 pairs, in a clear-up of the season; all sizes in the lot; high-grade genuine Good-year welted Oxfords, in finest patent-calf, tan Russia calf, gunmetal calf and vic kid leathers; button and lace styles. Sizes 6 to 11. Regular \$4.00 to \$5.00. Tuesday 1.69.

300 pairs of Men's \$4.00 to \$5.00 Boots, at 2-99.

Boys' School Shoes, Less Than Half Price, 99c. All we have of gum-metal and tan calf lace Oxfords; full round toes; oak tanned leather soles; military heels. 140 pairs. Sizes 1 to 5. Regular \$2.00 to \$3.00. Tuesday 99c.

No mail or phone orders.

Children's \$2.95 Boots at 99c. Hussey or Military Style Button Boots, made of best quality patent calf, dull calf and tan Russia calf leathers; flexible McKay soles; Educator toe shapes; spring and low heels; brown, red, white and all black tops, with and without patent leather trimmings. Sizes 2 to 10 1/2. 400 pairs. Regular \$1.75 to \$2.95. No phone or mail orders. Tuesday 99c.

VISITORS TO THE CITY who know the advantages of this company's one-day service by mail are reminded that they can purchase here in the store the same class of merchandise as we catalogue and have the goods delivered to their homes with all charges prepaid. Groceries, furniture and other heavy or bulky goods not catalogued are also prepaid to any station in Ontario when the total order is ten dollars or over.

FOR THEIR CONVENIENCE while shopping we will be glad to have them check any bags or parcels in the Check Room in the Basement. No charge is made for this service.

THE REST ROOM IS ON THE Third Floor, the Lunch and Tea Room on the Sixth.

Underpriced Clearing of Pillow Cases

We could not now buy the material in these cases for the money. About 600 pairs in the lot; two sizes; 42 x 33 and 44 x 33 inches, neat hems. Tuesday, 4 pairs. 99c.

Reversible Saten Bed Comforters, serviceable colorings, well quilted, size 70 x 70 inches. Regular \$1.00. Tuesday 99c.

White English Satin Bed Quilts, floral and conventional designs; size 72 x 94 inches. Tuesday 2.19.

Heavy Bleached Twilled Sheet, 80 inches wide. Tuesday, yard. 28c.

Factory or Unbleached Cotton, 36 inches wide, for hospital sheets. Tuesday, yard 3/2.

All-Linen Crash Roller Towelling, 18 inches wide. Tuesday, yard. 12/2.

Domestic Table Linen, fully bleached, width 70 inches. Tuesday, yard. 95c.

Hemmed Linen Huckaback Bedroom Towels, size 20 x 33 inches. Tuesday, pair 49c.

Picnic Needs

White Crepe Paper Napkins, size 14 x 14 inches, superior quality. Special, 10c per 100, 200 for 19c.

Waxed Sandwich Roll, containing 24 sheets grease-proof wrapping. Regularly 6c. Special, 3 rolls 10c, 6 rolls 19c.

Cardboard Picnic Plates, 6-inch, 3c per doz.; 8 and 9-inch, 4c per doz.

Lily Sanitary Drinking Cups, 5 in a carton; loose, 10c per doz.; 75c per 100.

Special Lunch Set, containing one heavy crepe paper table cover, 52 x 42 inches, also 12 napkins, set. 10c.

Outing Set, contains 2 heavy crepe paper table covers, size 6 ft. x 4 1/2 ft., also 25 napkins. Special, complete, 18c.

Dennison's Fast Color Lunch Set, containing one white fancy table cover, 12 decorated napkins, and six plates, per set. 30c.

Dennison's Fancy Napkins, new designs, 5c doz. 35c per 100.

Just a few more days to prepare for Exhibition visitors, and only a short time still in which to buy Furnishings at August Sale prices. Join the Homelovers' Club and get the benefit of these Sale prices, with the accommodation of paying during the coming months. Club Secretary, Fourth Floor.

MAIN FLOOR

CLEARING MEN'S SUITS AT \$15.00.

Regular \$20.00, \$21.00, \$22.50 and \$25.00 suits, broken size ranges; gray and brown stripes, English tweeds and blue twills, newest styles, sizes 34 to 44.

\$2.00 KHAKI TROUSERS FOR \$1.49

Sizes 31 to 42.

BOYS' SCHOOL SUITS \$4.95

Two pairs of bloomers with each suit, gray and brown tweeds, Norfolk coats, sizes 25 to 35.

MEN'S 50c TWEED CAPS FOR 25c

MEN'S WATERPROOF CAPS 45c

MEN'S SOFT HATS \$1.00

MEN'S NEGLIGEE SHIRTS 73c

MEN'S BALBRIGGAN UNDERWEAR 23c

MEN'S \$1.25 FLANNELETTE PYJAMAS 89c

SILK NECKTIES 25c

WOMEN'S LISLE HOSE 25c

WOMEN'S ARTIFICIAL SILK HOSE 39c

WOMEN'S 'PENANGLE' SECONDS 29c

WOMEN'S SILK HOSE 75c

WOMEN'S COTTON HOSE 12 1/2c

BOYS' AND GIRLS' STOCKINGS 15c

MEN'S 45c CASHMERE HOSE 29c

\$1.25 HAND BAGS AT 64c

MANTEL CLOCKS HALF PRICE.

200 UMBRELLAS AT 39c

180 UMBRELLAS AT \$1.25

10 CASES OF EMBROIDERIES.

Lot 1, Cambric Insertions and Embroideries at 5c.

Lot 2, Cambric and Swiss Embroideries and Insertions at 8c.

Lot 3, Cambric, Swiss and Nainsook Embroideries at 12 1/2c.

BABY FLOUNCINGS, Swiss, 27 inches wide, at 33c.

Baby Beadings and Seamings, Swiss, Cambric and Nainsook, 7c to 25c.

SECOND FLOOR

BLACK VELVET HATS HALF PRICE.

Makers' samples, new shapes, some colors. Regular \$2.00 to \$4.50. Tuesday, Half Price.

NEW MILLINERY ORNAMENTS.

Cut steel beads, pearl cabochons, cut steel flowers, lobster effects, butterflies, bugs and Oriental ornaments.

SHEPHERD'S CHECK SUITING 38c

English worsteds, all sizes of check, 42 inches wide. Regularly 50c.

UNORUSHABLE STRIPED PERMO 75c

New stripes, in black or gray with white, 42 inches wide. Regular \$1.00.

STRIPED CREPE DE CHINE 69c

Also voiles, new autumn shades. Regular 85c

\$1.00 PRIESTLEY SERGES FOR 74c

2,500 YARDS BLACK SILK PAILLETTE AT 87c.

3,000 YARDS BLACK DUCHESSE MOUSSELINE AT \$1.24.

2,000 YARDS BLACK CHIFFON TAFFETA.

1,500 YARDS BLACK SUITING SILKS AT \$1.48.

3,000 YARDS CREPE DE CHINE AT \$1.24.

THIRD FLOOR

SUMMER DRESSES CLEARING.

Lot 1, 150 Dresses, in voiles, muslins and crepes. Regular \$5.00, \$1.95.

Lot 2, 200 Dresses, floral, check, spot and stripe materials, smartest styles for this season; frilled, shirred and plaited skirts. Regular \$7.50, for \$2.95.

WOMEN'S NEW FALL COATS \$15.00

40 coats, many styles, tweeds, checks, broken plaids, stripes, ribelines and novelty weaves.

FUR FABRIC COATS FOR WOMEN, \$12.95

Persian lamb imitation, new style for this season.

MISSIS' NEW FALL SUITS \$12.50 TO \$25.00.

Semi-Norfolk, pleated, belted and Russian, newest fabrics for this season.

MISSIS' FALL SUITS AT \$20.00.

Blue or black serge, full saque coat, satin lined, plain flare skirt, latest New York model.

TAFFETA SILK PETTICOATS \$3.95.

Nine colors, lengths 36 to 42.

LONG CREPE KIMONOS \$2.50.

Empire style, five colors, sizes 34 to 44.

\$1.95 STRIPED BLOUSES AT \$1.00.

White and black striped voile, organza collar and cuffs, sizes 34 to 42 bust.



Simpson's New Market
All the supplies for your table at the closest prices from the best equipped and most sanitary market in Toronto--Telephone Adelaide 6100.

Spring Lamb Specials
FINEST QUALITY
Legs of Spring Lamb, lb. 32c
Loin of Spring Lamb, lb. 30c
Forequarter of Spring Lamb, per lb. 25c
Choice Rib Roast Beef, lb. 32c
Tender Round Steak, per lb. 22c
Pickled Shoulder of Pork, per lb. 15c
Macle Baking Powder, 1-lb. tin 10c
Fleischmanns Butter, per lb. 25c
Shirley's Marmalade, 7-lb. jar 25c
Quaker Oats, large package 15c
Clark's Peas, 5 lbs. 25c
Cowan's Cocoa, 4-lb. tin 15c
Pure Clover Honey, new, 8-lb. tin 10c
Finest Canned Shrimps, 3 packages 10c
Paris Fats, per tin 15c
Choice Red Salmon, 2-lb. can 10c
Imported Sour Mixed Pickles, 16-oz. bottle 10c
Red Wing Grape Juice, bottle 10c
Garden of Eatin' Raisins, 2 lbs. 10c
St. Charles Milk, per 16-cup 10c
Cowan's Biscuits, 16-oz. tin 10c
Daddy's Sauce, bottle 10c
Garden of Eatin' Raisins, 2 lbs. 10c
500 lbs. Quaker Chewin' Candy, regularly 15c; 2 lbs. 10c
Fry's Peppermint and Chocolate Cherry Bar, 3 for 10c
Butterscotch Drops, per lb. 10c

Cooked Meats
Jellied Lunch Tongue, per lb. 25c
Spiced Beef Ham, per lb. 40c
Roast Pork, per lb. 40c
Roast Beef, per lb. 40c
Roasted Whole Chicken, 2 1/2 to 3 1/2 lbs. per lb. 40c

Vegetables
Telephone Adelaide 6100.
500 Baskets Potatoes, New On. 25c
Picked Shoulder of Pork, 25c
New Beans and New Carrots, 2 bunches 10c
Celery, choice stock, per bunch 5c
Spanish Onions, 7 lbs. 5c
New Onions, 5 lbs. 4c

Simpson's Grocery List
TELEPHONE DIRECT TO DEPARTMENT, ADELAIDE 6100.

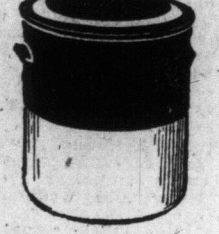
4000 tins Finest Canned Tomatoes, 3 tins 25c
One car Standard Granulated Sugar, in 20-lb. cotton bags, per bag 1.25
Oulivier's Royal Household Flour, 50 lbs. quarter-bag 1.25
California Seeded Raisins, regularly 15c, package 10c
Macle Baking Powder, 1-lb. tin 10c
Fleischmanns Butter, per lb. 25c
Shirley's Marmalade, 7-lb. jar 25c
Quaker Oats, large package 15c
Clark's Peas, 5 lbs. 25c
Cowan's Cocoa, 4-lb. tin 15c
Pure Clover Honey, new, 8-lb. tin 10c
Finest Canned Shrimps, 3 packages 10c
Paris Fats, per tin 15c
Choice Red Salmon, 2-lb. can 10c
Imported Sour Mixed Pickles, 16-oz. bottle 10c
Red Wing Grape Juice, bottle 10c
Garden of Eatin' Raisins, 2 lbs. 10c
St. Charles Milk, per 16-cup 10c
Cowan's Biscuits, 16-oz. tin 10c
Daddy's Sauce, bottle 10c
Garden of Eatin' Raisins, 2 lbs. 10c
500 lbs. Quaker Chewin' Candy, regularly 15c; 2 lbs. 10c
Fry's Peppermint and Chocolate Cherry Bar, 3 for 10c
Butterscotch Drops, per lb. 10c

Summer Breakfasts in the Palm Room, 8.30 to 10.30 a.m. 15, 20, 25c

25 Cent Day in Hardware

A long list of everyday household hardware needs. Regularly sold at 30c, 35c and 40c.

Aluminum Sauce Pans, one-quart size.
Aluminum Round Pudding Pans, one quart.
Enamel Sauce Pans and Dish Pans.
Enamel Preserving Kettles, 4, 5 and 6 quarts.
Enamel Covered Kettles, Moulds, Chambers.
Fruit Press or Potato Ricer.
Scissors and Shears, large and small.
Table Knives, silver-plated, dessert and table size.
Butcher, Bread, Steak Knives.
Pocket Knives, Safety Razors.
Waxing Can, 2 to 10-quart sizes.
Steel Fry Pans, large size.
Window Screens, adjustable sizes.
Corn Brooms, Bannister Brushes.
Sieve Brushes, Shoe Brushes.
Mop and Mop Stick, complete.
Clothes Lines, wire, 100 feet.
Liquid Veneer, with duster cloth.
Wash Boards, zinc-faced.
Split Clothes Baskets.
Deluge Sprayer, for vines, trees, shrubs.
Regularly 30c to 60c values. Tuesday 25c.



A Car Load of Stone Crockers for Preserving

Good quality, extra heavy, salt-glazed stoneware, suitable for preserving butter, pickles, eggs, etc.

CROCK WITH LID.
1/2-gallon. Regularly 30c each. Tuesday 25c.
1-gallon. Regularly 30c each. Tuesday 25c.
1-gallon. Regularly 40c each. Tuesday 35c.
2-gallon. Regularly 60c each. Tuesday 55c.
3-gallon. Regularly 80c each. Tuesday 75c.
4-gallon. Regularly 100c each. Tuesday 95c.
5-gallon. Regularly 120c each. Tuesday 115c.
6-gallon. Regularly 140c each. Tuesday 135c.
7-gallon. Regularly 160c each. Tuesday 155c.
8-gallon. Regularly 180c each. Tuesday 175c.
10-gallon. Regularly 220c each. Tuesday 205c.
Same quality earthenware as above: 1-gallon size, 15c; 2-gallon size, 25c.

Linoleums Laid Free if Ordered This Week

This special August offer is made doubly attractive by reason of the fact that we are quoting special prices, as well as laying FREE.

NOTE THESE VALUES IN PRINTED LINOLEUMS AND FLOOR OILCLOTHS, ALL LAID FREE.

Linoleum, 2 yards wide, at, per square yard. 43c
Floor Oilcloth, 1 and 2 yards wide, at, per square yard, at, per square yard. 30c
Extra Heavy Floor Oilcloth, 2 yards and 2 1/2 yards wide, at, per square yard. 35c

All of Your Drapery Needs Covered by This List

English and American Chintzes at 39c. An unusually large assortment of colorings and designs; 30 and 36 inches wide.

American Taffetas and Repe at 49c. Heavy weight, especially adaptable for curtains or coverings; 36 in. wide.

English Printed Repe at 88c. 31 in. wide; exceptionally fine quality.

Artistic Curtain Scrim at 33c. Cream, white or ecru; 40 in. wide.

Scotch Curtain Madras, 54c. Floral designs; 50 in. wide; cream or white.

Curtain Nets, Muslins or Serim. Special purchases; some with insertions and lace edgings; others with frilled edge, or colored borders; 36 and 40 in. wide; white or cream ground.

English Curtain Nets at 19c. Regular 30c a yard.

Extension Curtain Rods, 7c. Silvered ends, extending from 24 to 48 in.

Coarsest Extension Rods, 17c. Brass, with curved-end brackets, allowing the curtains to return to the wall; extending from 25 to 50 in.

Re-upholstering. We re-upholster furniture, and charge only one-half the usual price for the labor. Let us send a man to your home and give you a price.

French Upholstering Tapestry, \$1.00 per yard; 50 in wide.

French Ambosson Tapestry, \$1.00, 50 in. wide; block designs.

Window Shades. Full range of qualities, including oil opaque cloth and Scotch Holland. Phone to our department and have an experienced man come to your home and measure your windows for estimate.

Oriental Wicker
Electric Table Lamps
20 only, assortment of colors. A large selection of mouldings. Regularly \$2.49. Tuesday 1.74c.

Wall Papers at Half Price and Less

Bedroom Papers, shadow printed stripes, floral effects and chintzes, on light backgrounds, in blue, green, pink, mauve and yellow. Regularly 25c. Tuesday 15c.

Parlor, Hall and Dining-room Papers, fruit and foliage weaves, in browns, greens, tans and blended colorings. Regularly 35c. Tuesday 25c.

Imported Wall Papers, for living-rooms, halls, bedrooms and drawing-rooms; large variety of patterns and colorings. Regularly \$1.00. Tuesday 49c; regularly 75c. Tuesday 50c.

Calderwick Oatmeal, 30 inches wide, 8-yard roll, 20c Tuesday.

White and Cream Silk Mire Ceilings. Tuesday 17c.

Moulding, 1 1/2-inch wide, white enamel imitation oak, standard finish. Tuesday, foot 1c.



Get the Bedrooms Ready

Iron Bedstead, pure white enamel, brass caps, standard sizes. Regular \$3.00. Tuesday \$2.49.

Brass Trimmed Iron Bedstead, white enamel, brass top rails, caps and uprights, standard sizes. Regular \$5.25. Tuesday 3.95.

Brass Bedstead, 2-inch posts, standard sizes. Regular \$10.50. Tuesday 7.15.

Brass Bedstead, 2-inch continuous posts, standard sizes. Regular \$18.00. Tuesday 12.95.

Brass Bedstead, 2-inch posts, double top rails, standard sizes. Regular \$22.50. Tuesday 14.15.

Brass Bedstead, heavy posts and top rails, turned ball corners, standard sizes. Regular \$24.75. Tuesday 18.95.

Bed Spring, steel tubing frame, heavy woven steel springs, standard sizes. Regular \$23.00. Tuesday 16.95.

Bed Spring, steel tubing frame, heavy woven steel coil wire springs, standard sizes. Regular \$25.00. Tuesday 18.95.

Bed Spring, steel tubing frame, heavy woven steel coil wire springs, standard sizes. Regular \$30.00. Tuesday 23.95.

Bed Spring, heavy steel tubing frame, standard sizes. Regular \$4.25. Tuesday 2.90.

Bed Spring, heavy steel tubing frame, standard sizes. Regular \$3.10. Tuesday 2.30.

Mattress, sanitary seagrass filling, jute felt at both sides, standard sizes. Regular \$25.00. Tuesday 19.75.

Mattress, cotton felt filling, built in layers. Regular \$7.00. Tuesday 4.55.

Dresser, quarter-cut oak finish, golden color or mahogany finish. Regular \$8.00. Tuesday 5.95.

Dresser, quarter-cut oak, fumed or golden, or genuine mahogany veneered. Regular \$21.50. Tuesday 12.95.

Extension Couch Bed, steel angle frame, woven steel wire springs, mattress filled with cotton felt, green denim covering with valance. Regular \$9.75. Tuesday 6.95.

Wilton Rugs at Sale Prices Today

4 1/2 x 7 1/2, regular \$10.75 to \$12.25. Tuesday \$8.95; regular \$13.50 to \$16.00. Tuesday \$12.95.

4 1/2 x 9 1/2, regular \$14.00 to \$15.75. Tuesday \$12.75; regular \$16.25 to \$19.25. Tuesday \$13.75.

Size 6 1/2 x 9 1/2, Oriental and conventional designs. Regular \$22.50 to \$28.75. Tuesday 19.75; regular \$26.50 to \$32.75. Tuesday 22.50.

Size 6 1/2 x 10 1/2, regular \$16.75. Tuesday \$12.75; regular \$24.75. Tuesday 19.75.

Size 9 1/2 x 9 1/2, regular \$24.00 to \$27.00. Tuesday \$21.75; regular \$29.75 to \$32.50. Tuesday \$25.75.

Size 9 1/2 x 10 1/2, a big range of designs and colors shown in this popular size, suitable for all rooms. Regular values from \$27.75 to \$29.75. Tuesday \$25.00. Regular values from \$35.00 to \$40.00. Tuesday \$31.00.

Size 9 1/2 x 12 1/2, regular \$31.75 to \$37.50. Tuesday \$27.00; regular \$43.00 to \$45.75. Tuesday \$38.00; regular \$47.00. Tuesday \$42.00.

Size 9 1/2 x 13 1/2 and 9 1/2 x 15 1/2, regular \$36.00. Tuesday \$29.50; regular \$46.00 to \$49.50. Tuesday \$44.50.

Sizes 11 1/2 x 12 1/2 and 11 1/2 x 13 1/2, \$35.00, \$46.00 and \$65.00.

The Robert Simpson Company, Limited

APARTM...
Maple Avenue
Month. Seven
with hardwood
furniture. Con
H. H. V.
38 K.

PROB...

GER...
Ge
TUR
Bor
Ger

GEN. H...
NOW
OF H...

His Title of...
Him Ra...

AUDIENC...

Signal Ho...
Militia
ing

By a Staff Re...
OTTAWA.
announces th
Hughes. Cana
was knighted
audience with
ingham Palms
In connecti
conferred up
rated that K
a military tit
C.M.G. T
K.C.B. is S
manned the
South Africa
ber than the G
king's Privy
O
It remains
knight will
christened we
is in gener
assume the
phet of old
News of re
was well rec
had someho
something of
the old count
done magist
handling of
with an equip
a splendid fa

The new
having been
Jan. 8, 1853,
John Hughes
who came to
ago. He was
in Normal
University of
German and
sary School
a public sch
Belleville,
But retiring
1885, he dev
and was ed
Lindsay Wa
her too pla
at Lon
Victoria's 11
he holds a
Regiment f
part of th
him to ta
In that r
repelling th
the South
led the attac
las and Or
Puts, being
despatches.
S.A. field fe
one year
ed. He ent
became mi
Robert Bo
in office b
abolished a
itary
with the o
forces for
know for
of the war
major-gene
Previous
itor or mi
Mary E
Burk, one
ham.

BRITISH

LONDON
summer S
crew was

Available
writing at
of these a
more from
the tank
last report
May 18.