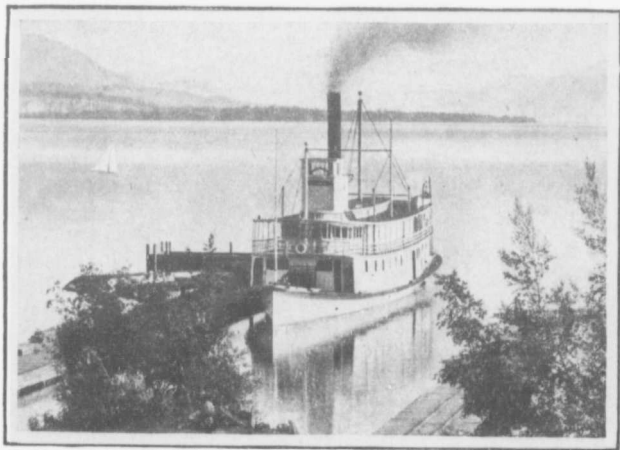


## Canadian Rocky Mountains

other is from Arrowhead, reached from Revelstoke (34 miles west of Glacier) to branch railway, thence by Canadian Pacific steamers down the Arrow Lakes and Columbia River to Nelson. By this route, the Kootenay gold and silver-lead districts are reached. The scenery along the Columbia River and the Arrow Lakes is magnificent, and the steamers are well appointed, and the outings are very enjoyable.

The Okanagan Valley, reached from Sicamous, where there is a comfortable hotel, which is a favorite resort for holiday-seekers and sportsmen. The C.P.R. steamer "Aberdeen" makes the run of the entire length of Lake



*Canadian Pacific Ry. Steamer on Arrow Lakes, B.C.*