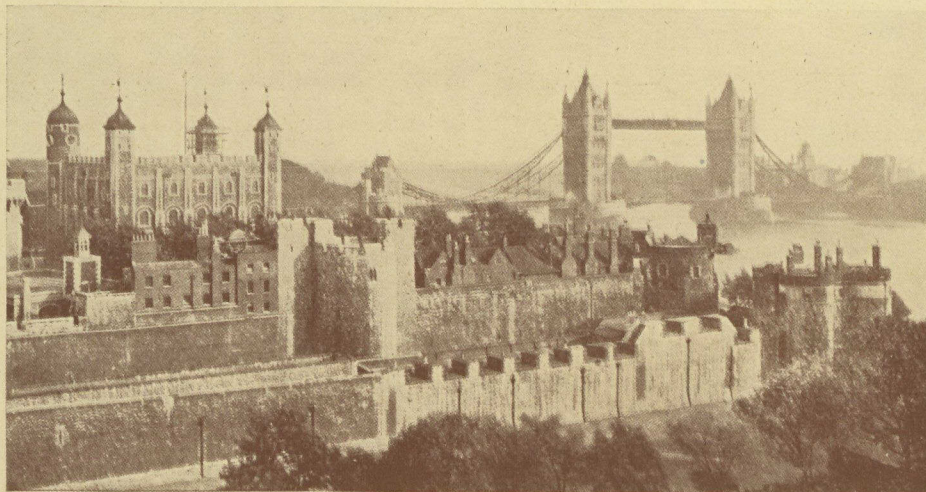


last, including the original equipment and the current, overhead and annual charges over the period, was about \$97,000, which equals about \$1.64 per man per day. This is considerably less than we expected, and shows the very careful and efficient manner in which the affairs of the Home have been administered by the Resident Secretary. Of the total expenditure of \$97,000 as stated, \$39,000 have been provided by the Verity Plow Co., the Bain Wagon

Co., and by our own and their employees and agents, leaving a balance of \$58,000 to be provided for by this Company.

"It is a matter for congratulation for all of us that through the medium of this Home we have been able to be so helpful to so many of our sick and disabled Canadian soldiers, who would otherwise have been cared for amongst comparative strangers.



The Tower and Tower Bridge, London.

## Through London on a Char-a-Banc

A fund of \$40,000 or more was collected some time ago in Canada for the purpose of providing interesting entertainments for Canadian wounded soldiers when in London. All the arrangements for these entertainments are in the hands of the Social Welfare Department of the Canadian Chaplains' Service in London, the organization being very capably handled by Captain T. A. Mosley. One of the principal forms which these entertainments take are drives by motor char-a-banc through the most interesting parts of London.

A letter of thanks by one of our patients, Quartermaster Sergeant Poole, who took part in one of these outings, was written to the Canadian Chaplains' Social Welfare Department, and a copy is given below :

"I should like to express to you on my behalf, as well as of my companions, how highly we appreciated and enjoyed one of the very pleasant and instructive all-day outings which the Canadian Chaplains' Social Welfare Department arranges periodically for convalescent Canadian soldiers in London. Not only are these outings most enjoyable, but, thanks to the arrangements made and the explanations of the capable guides accompanying the party, they give our soldiers, in a short space of time, an excellent idea of the principal streets, buildings, monuments ancient and modern, as well as of the business life and greatness of the chief city of the Empire.

"Having been patients at the Massey-Harris Convalescent Home for the Christmas and New