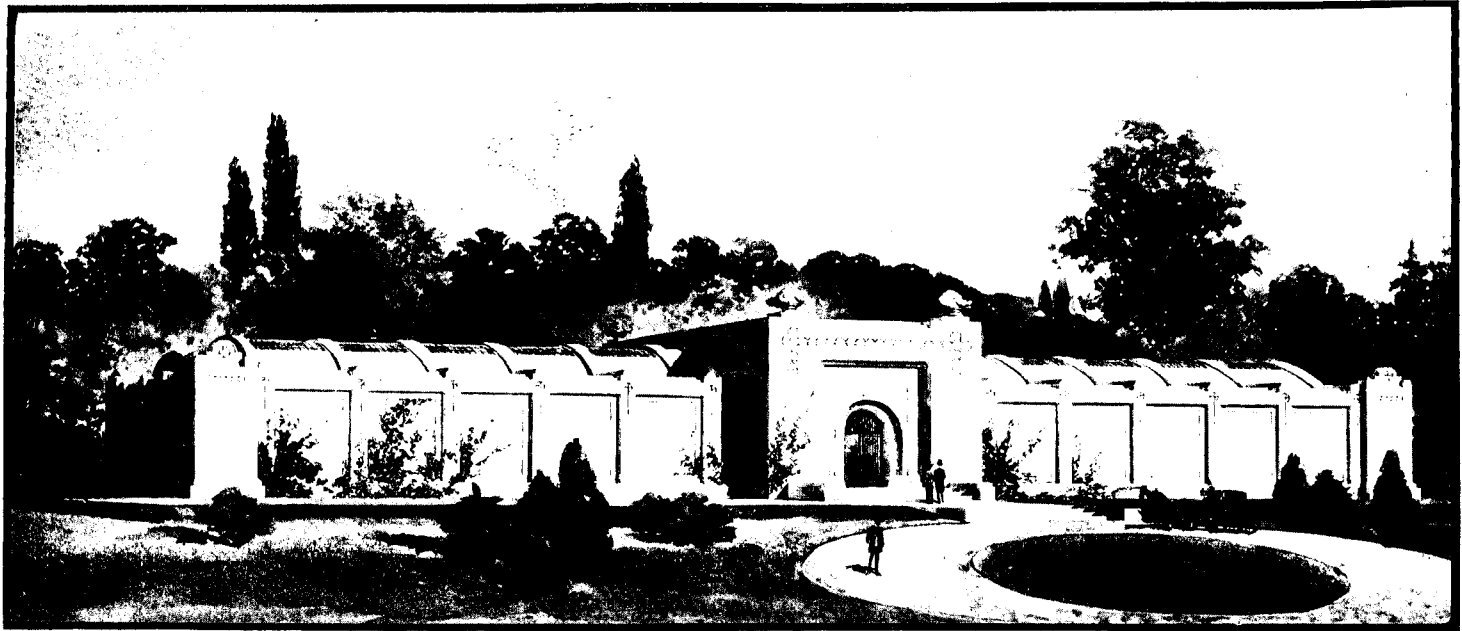


# ROMAN

Trade Mark

The Stone of Quality



Proposed Compartment Mausoleum for Toronto. Green and Wicks, Architects.

These Mausoleums are to be of reinforced concrete construction, finished on the exterior with **ROMAN STONE**. **ROMAN STONE** has been selected because of its superiority by withstanding the effects of the elements for years. It also adds tone and dignity combined with structural character, which were the necessary requirements.



Merchants Fire Insurance Co. Beaumont Jarvis, Architect, Toronto.

## ROMAN STONE CO.

LIMITED

HEAD OFFICE 504-5, TEMPLE BUILDING  
TORONTO WESTON, ONT.

