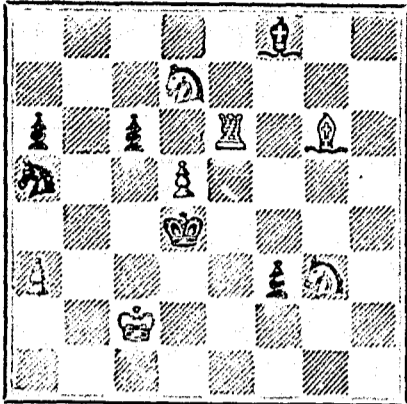


We learn that the seventh annual chess match between the Universities of Oxford and Cambridge took place on Thursday, the 3rd ult., at the St. George's Chess Club, King street, St. James's London. The result was a victory for the Cambridge players who won by five games to four, with three draws.

PROBLEM No. 222.

From "Chess Problems."

By Revd. A. Cyril Pearson. BLACK.



WHITE

White to play and mate in three moves.

GAME 355TH.

Played in 1851 between Herr Anderssen and M. Kieseritzky.

(Bishop's Gambit.)

- WHITE.—(Herr Anderssen.) BLACK.—(M. Kieseritzky.) 1. P to K 4 1. P to K 4 2. P to K B 4 2. P takes P 3. B to B 4 3. Q to R 5 (ch) 4. K to B sq 1. P to Q Kt 4 5. B takes Kt P 5. K to Kt B 3 6. Kt to K B 3 6. Q to R 3 7. P to Q 3 7. Kt to R 4 8. Kt to R 4 8. Q to Kt 4 9. Kt to B 5 9. P to Q B 3 10. P to K Kt 4 10. Kt to B 3 11. R to Kt sq 11. P takes B 12. P to K R 4 12. Q to Kt 3 13. P to R 5 13. Q to Kt 4 14. Q to B 3 14. Kt to Kt sq 15. B takes P 15. Q to B 3 16. Kt to B 3 16. B to B 4 17. Kt to Q 5 17. B takes Kt P 18. B to Q 6 18. Q takes R (ch) 19. K to K 2 19. B takes R 20. P to K 5 20. Kt to Q R 3 21. Kt takes Kt P (ch) 21. K to Q sq 22. Q to B 6 (ch) 22. Kt takes Q 23. B to K 7 mate

Considered to be the most beautiful game on record.

GAME 356TH.

Played in 1851 between Herr Anderssen and Mr. Staunton.

(Sicilian.)

- WHITE.—(Herr Anderssen.) BLACK.—(Mr. Staunton.) 1. P to K 4 1. P to Q B 4 2. P to Q 4 2. P takes P 3. Kt to K B 3 3. P to K 3 4. Kt takes P 4. B to Q B 4 5. Kt to Q B 3 5. P to Q R 3 6. B to K 3 6. B to Q R 2 7. B to Q 3 7. Kt to K 2 8. Castles 8. Castles 9. Q to K R 5 9. Kt to Kt 3 10. P to K 5 10. Q to Q B 2 11. Q R to K sq 11. P to Q Kt 4 12. P to K B 4 12. B to Q Kt 2 13. Kt to K 4 13. Q B takes Kt 14. B takes B 14. Kt to Q B 3 15. Kt takes Kt 15. P takes Kt 16. P to K Kt 4 16. Q R to Q sq 17. K to R sq 17. P to Q B 4 18. R to K B 3 18. Q to Q R 4 19. Q R to K B sq 19. Q to R 5 20. B to Q 3 20. Q takes Q R P 21. R to K R 3 21. P to K R 3 22. P to K Kt 5 22. R takes B 23. P takes R 23. Q checks 24. Q R to K B 3 24. Kt to K 2 25. P takes P 25. P to K Kt 3 26. P checks 26. K to R sq 27. Q to Kt 5 27. Kt to K B 4 28. Q checks 28. Kt to K 2 29. P to K B 5 29. Q to Q Kt 6 (ch) 30. B to K R 6 30. Q to Q 8 (ch) 31. K moves 31. Q to K 7 (ch) 32. R to K B 2 Resigns

SOLUTIONS.

Solution of Problem No. 20

- WHITE. BLACK. 1. Q to B 5 1. P takes Q 2. K to B 6 (ch) 2. K to B 5 3. Kt to K 6 mate

Solution of Problem for Young Players No. 218.

- WHITE. BLACK. 1. Q to Q B sq 1. Any move 2. Q mates

PROBLEMS FOR YOUNG PLAYERS, No. 219.

- WHITE. BLACK. K at Q 8 K at K B 2 R at K Kt 6 B at Q Kt 6 B at K Kt 4 Pawns at K 4 B at Q B 5 K B 3 and Q R 5 Pawns at K 4 K R 5 and Q R 3

White to play and mate in two moves.

D. MORRICE & CO., Ice Dealers,

24 VICTORIA SQUARE.

Prompt Delivery and Pure Ice.

BANK OF MONTREAL.

NOTICE IS HEREBY GIVEN that a Dividend of five per cent. upon the paid-up capital stock of this Institution, has been declared for the current half-year, and that the same will be payable at its Banking House, in this city, on and after

Monday, the Second of June next.

The Transfer Books will be closed from the 17th to the 31st May next, both days inclusive.

THE ANNUAL GENERAL MEETING Of the Shareholders will be held at the Bank, on Monday, the Second Day of June next.

The Chair to be taken at One o'clock.

R. B. ANGUS, General Manager.

Montreal, 15th April, 1879.

THE LONDON MANUFACTURING CO.

SENT THEIR

ESSENCES OF MATS

to the Board of Public Charities, New York, and invited the severest tests. The result is the following:

To the London Manufacturing Co.:

GENTLEMEN.—I have and shall continue to prescribe your Meat Essences. I have found them useful in all cases demanding rapid assimilation of the stomach, such as Dyspepsia, Anemia and Phthisis, or in cases where severe mental or physical exertion have exhausted the vital powers. I consider your extracts superior to Liebig's.

Yours respectfully,

(Signed) L. G. DOANE, M.D.

Volunteer Physician to the Department of Public Charities and Corrections, New York City.

The above Essences can be had at druggists' and grocers.

For sale by LYMANS, CLARE & Co., and H. SUGDEN EVANS, Montreal.

CARDS—101 by of the Valley, 10 Scroll, 10 Engraved, 10 Transparent, 1 Model Love Letter, 1 Card Case, name on all, post-paid, 15c. 4 packs 50c. WARD & CO., NORTHFORD, CONN.

THE Canadian Spectator,

A high-class Weekly Journal,

EDITED BY THE

Reverend A. J. BRAY.

SUBSCRIPTION: \$2.00 PER ANNUM.

OFFICES: 162 St. James Street, Montreal, and 4 Toronto Street, Toronto.

THE MILTON LEAGUE.

"Give me the liberty to know, to think, to believe, and to utter freely, according to conscience, above all liberties.—Milton."

PUBLICATIONS:

- BRAY, REV. ALFRED J. The Churches of Christendom, cloth. \$1.00 BROWN, REV. J. BALDWIN. The Doctrine of Annihilation in the Light of the Gospel of Love. 50 DALE, REV. R. W. Protestantism: Its Ultimate Principle. 60 The Ten Commandments. 60 DAWSON, GEO., M.A. Prayers, and a Discourse on Prayer. 50 McLEOD, NORMAN, D.D. Scotch Pebbles. 15 TIPPLE, Rev. S. A. Echoes of Spoken Words. 50

"Here is a new wave of literature, and of the deep and wide sea of religious thought, but sparkling and bright and gratefully refreshing."—Literary World.

For Blanc-mange, Puddings, Custards, Children's and Invalids' Diet, And all the uses of Arrowroot.

Durham Corn Flour!!

Has a World-wide reputation, And is distinguished for Uniformly Superior Quality.

ROWNTREE'S ROCK COCOA

Being Pure Cocoa will not thicken in the cup, is therefore a thin, not a thick, pasty drink.

It is one of the most nutritious and agreeable kinds of food which can be used in liquid form, as whilst admirably suited to the sick, is a luxury to those who are in health.

WM. JOHNSON,

St. Francois Xavier St.,

MONTREAL. SOLE AGENT.

50 Perfumed Chromo and Lace Cards, name in gold in fancy case, 10c. Davids & Co., Northford, Ct.

\$10 to \$1000 invested in Wall St. Stocks makes fortunes every month. Book sent free explaining everything.

Address BAXTER & CO., Bankers, 17 Wall St., N. Y.

25 FANCY CARDS with Name 10c. Plain or Gold, Agents' Outfit 10c. 150 Styles. Hull & Co., Hudson, N. Y.

MOTHERS DURHAM CORN FLOUR,

FOR INFANTS

and INVALIDS,

KNOW IS THE BEST.

The Scientific Canadian

MECHANICS' MAGAZINE,

AND

PATENT OFFICE RECORD,

A MONTHLY JOURNAL

Devoted to the advancement and diffusion of Practical Science, and the Education of Mechanics.

THE ONLY SCIENTIFIC AND MECHANICAL PAPER PUBLISHED IN THE DOMINION.

PUBLISHED BY

THE BURLAND-DESBARATS LITH. CO.

OFFICES OF PUBLICATION:

5 and 7 Bleury Street, Montreal.

G. B. BURLAND, General Manager.

F. N. BOXER, ARCHITECT & CIVIL ENGINEER, Editor.

TERMS:

One copy, one year, including postage. \$2.00 One copy, six months, including postage. 1.10 Subscriptions to be paid in ADVANCE.

The following are our advertising rates:—For one monthly insertion, 10 cts. per line; for three months, 2 cts. per line; for six months, 3 cts. per line; for one year, 7 cts. per line; one page of illustration, including one column description, \$30; half-page of illustration, including half column description, \$20; quarter page of illustration, including quarter column description, \$10. 10 per cent. off on cash payments.

INVENTIONS AND MACHINERY, &c., or other matter of an original, useful, and instructive character, and suitable for subject matter in the columns of the MAGAZINE, and not as an advertisement, will be illustrated at very reduced rates.

REMITTING MONEY.—All remittances of money should be in the form of postal-orders. When these are not available, send money by registered letters, checks or drafts, payable to our order. We can only undertake to become responsible for money when sent in either of the above ways. This journal is the only Scientific and Mechanical Monthly published in Canada, and its value as an advertising medium for all matters connected with our Manufacturing, Foundries, and Machine Shops, and particularly to inventors, is therefore apparent.

JUST PUBLISHED

CHISHOLM'S ALL-ROUND ROUTE AND PANORAMIC GUIDE OF THE ST. LAWRENCE,

With corrections to date. It contains full descriptions of the points of interest on the "All Round Route," including Hudson River, Trenton and Niagara Falls, Toronto, Ottawa, Montreal, Quebec, Saguenay River, White Mountains, Portland, Boston, New York. It is profusely illustrated, and is furnished with maps of the Route, and a fine panoramic view of the St. Lawrence River. For sale by booksellers and news agents. Sent post-paid to any address on receipt of the price, 50 cts.

C. R. CHISHOLM & BROS.,

26-52-373 179 Bonaventure street, Montreal.

60 Chromo and Perfumed Cards (no 3 alike). Name in Gold and Jet. 10 cents. CLINTS BROS., Clintonville, Ct.

25 Fashionable Visiting Cards—no two alike, with name, 10c. Nassau Card Co., Nassau, N. Y.

THE COOK'S FRIEND

BAKING POWDER

Has become a HOUSEHOLD WORD in the land, and is HOUSEHOLD NECESSITY

in every family where Economy and Health are studied. It is used for raising all kinds of Bread, Rolls, Pancakes, Griddle Cakes, &c., &c., and a small quantity used in Pie Crust, Puddings, or other Pastry, will save half the usual shortening, and make the food more digestible.

THE COOK'S FRIEND

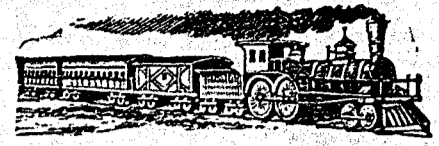
SAVES TIME, IT SAVES TEMPER.

IT SAVES MONEY.

For sale by storekeepers throughout the Dominion, and wholesale by the manufacturer.

W. D. McLAREN, UNION MILLS,

17-19-52-362 55 College Street.



Q. M. O. & O. RAILWAY Eastern Division.

COMMENCING TUESDAY, FEBRUARY 11th. Trains will be run on this Division as follows:—

Leave Hochelaga. Arrive in Quebec. EXPRESS..... 3.00 p.m. .... 10.10 p.m. MIXED..... 7.10 a.m. .... 5.50 p.m.

RETURNING.

Leave Quebec. Arrive in Montreal. EXPRESS..... 12.45 p.m. .... 7.30 p.m. MIXED..... 6.15 p.m. .... 10.10 a.m.

Trains leave Mile-End Station ten minutes later. Tickets for sale at offices of Starnes, Leve & Alden, Agents, 202 St. James Street, and 152 Notre Dame Street, and at Hochelaga and Mile-End Stations.

J. T. PRINCE,

Gen'l Pass. Agent.

Feby. 7th, 1879.

British American BANK NOTE COMPANY,

MONTREAL.

Incorporated by Letters Patent.

Capital \$100,000.

General Engravers & Printers

Bank Notes, Bonds, Postage, Bill & Law Stamps, Revenue Stamps, Bills of Exchange,

DRAFTS, DEPOSIT RECEIPTS, Promissory Notes, &c., &c., Executed in the Best Style of Steel Plate Engraving.

Portraits a Specialty.

G. B. BURLAND,

President & Manager.

AGENTS, READ THIS.

We will pay Agents a salary of \$100 per month and expenses, or allow a large commission to sell our new and wonderful inventions. We mean what we say. Sample free. Address,

SHERMAN & CO., Marshall, Mich.

TO LET.

In those central premises forming the corner of Bleury and Craig Streets, and in the adjacent house on Craig Street— OFFICES, double and single. FLATS, admirably adapted for light manufacturing business, with or without steam power. Rent moderate.

Apply to

G. B. BURLAND,

No. 7 Bleury Street.

CHEAPEST AND BEST.



JOHN DOUGALL & SON, 218 and 220, St. James Street, Montreal. Electrotyping and Job Printing, Chromatic and plain.