

streaks. Anterior third of thoracic shield mostly white. Transverse whitish bands on dorsum not so conspicuous as before. Tubercles on body blackish; setæ short, blackish.

*Stage III*—Length 13 mm. after moulting. Head 1.1 to 1.3 mm. wide, which now may be described as white, mottled with conspicuous dark brown, irregularly-shaped spots, mostly present on upper two-thirds epicranium. Body now pale mauve, above spiracles, venter darker, the whole skin marked with many black spots and streaks. The longitudinal stripes on the body indistinct, except three pale yellow stripes on venter, which are more apparent owing to the darker colour of the under surface of body. The transverse bands on dorsum are irregular and broken and in colour pale yellow. Stigmatal band whitish, blotched with yellow, broken, irregular, bordered with a wide blackish band beneath. Spiracles blackish. Thoracic feet dark brown, or black; prolegs concolorous with venter.

*Stage IV* (Fig. 2, plate XIV).—Length 21 mm. after moulting. Head 2.0 to 2.2 mm. wide. This stage is much the same as stage III, but the longitudinal stripes are now all yellow, and the skin is not so heavily marked with black spots and streaks. Transverse dorsal bands on abdominal segments as before. The lower joint only of each thoracic foot is now wholly black, the other joints being mostly white, banded above with black.

*Stage V* (Fig. 3, plate XIV).—Length 26 mm. after moulting. Head (fig. 15) 2.9 to 3.2 mm. wide, slightly indented at summit, flattened in front; whitish with yellowish tinge; mottled with brown as before; margined behind with black. Larvæ cylindrical in shape, and, in general, the same as Stage IV. Just after moulting the longitudinal stripes are plainly visible; as the larvæ grow these markings become less discernible. When mature and ready to pupate, the larvæ

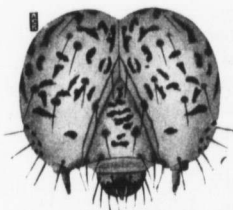


Fig. 15.—*Apoheimis rachele*, head of mature larva (X 33).

may be described as pale mauve or pale yellow—the colour varying in the specimens—with numerous irregularly-shaped streaks and spots of brown, venter darker; the markings on the dorsum not so heavy as in previous stages. Tubercles black, very small, of