

and in many other lines. It only needed a general revival of business to prove how inadequate, in good times, were the facilities and the supplies that were good enough for dull years. The increased consumption simply brought a famine in supplies; and the consequent increase in the cost of manufacture a rapid rise in the cost of material to the consumer.

The reported contract made by the Canagies to supply one thousand tons per day of material for the building of pressed steel railway cars, furnishes a single but convincing instance of the increasing use of iron in channels, hitherto practically untouched. "The famine" in railway freight cars, reported by such leading lines as the G.T.R., furnishes another evidence that demand will continue for some little time to come and at pretty firm prices too.

Messrs. Freneyar, Manager, and Hatmeyer of the Westinghouse Electric Company, of Buffalo, and Edwy Baxter, of Fort Erie, called on Mr. J. W. Langmuir, Chairman of the Niagara Falls Park Commissioners, at his office in Toronto last week, and talked over a plan for the building of an electric railway along the Canadian bank of the Niagara River from Fort Erie to Chippawa. They are anxious to secure the privilege from the Ontario Government of running along the chain reserve, and are endeavoring to make terms and conditions in order that a company may be formed for the carrying out of the project. The matter will be brought up at the next meeting of the Park Commissioners, when a more definite proposition will be submitted. The railway, if completed, would form the last link in the chain of electric roads along both

sides of the river. Mr. Baxter is the owner of a line of ferries which operate between Buffalo and Fort Erie, and these would probably be used to convey the trolleys to Buffalo, where connection with the lines of the International Traction Company would be secured.

Fire in the refrigerator works of Messrs. John Hillock & Co., Toronto, on Aug. 10th, did damage to the extent of about \$3,000.

The Grenfell Milling Co. will build a new grain elevator in Summerberry, N.W.T.

It is stated that J. D. King & Co., manufacturers of boots and shoes, who have operated a large factory in Toronto for a number of years and who a few years ago established an additional factory at Levis, Que., will abandon the latter plan and remove that plant to Toronto.

JOHN J. KELLER & CO.

104 and 106 MURRAY ST.
NEW YORK

220 Church St., Philadelphia.

135 Pearl St., Boston.

18 Pryor St., Atlanta, Ga.

**Aniline Colors,
Dyewood Extracts,
Sumac and
Nutgall Extracts.**

FAST COLORS for Wool Dyeing,
One Dip Cotton Colors, Novelties
and Specialties for Calico
Printing.

MANUFACTURED BY

JOHN R. GEIGY & CO.
BASLE, SWITZERLAND

**LIGHT YOUR
FACTORY WITH**

LUXFER PRISMS

The latest device for

LIGHTING

dark rooms and
offices

By Daylight

For catalogue
and estimates
write to

**Luxfer Prism
Co'y, Limited.**

58 Yonge Street, - TORONTO.

**You
Are
Thinking**

of putting in New Shafting,
Pulleys, Hangers, Tube Cut-
ters, Pipe Cutting Machines,
Swing Saws, Wood Lathes,
Dough Mixers, or Paper Box
Machinery.

We

Make all these lines, and can
quote you as good, if not bet-
ter prices than other people.

G. T. PENDRITH & CO.,

73 to 81 Adelaide St. West,
TORONTO.

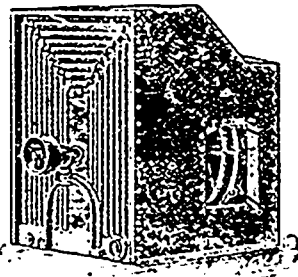
HEATING . . .

The Fan System of Steam Heating for Heating
of Factories and all Classes of Buildings.

DRYING . . .

Appliances for Drying

**Lumber, Brick, Wool, Cloth,
Hair, Soap, Glue, etc.**



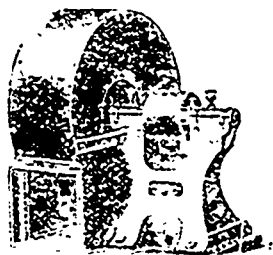
Heater and Housing.

VENTILATING . . .

Ventilating Fans for removal of Dust, Foul Air, etc.

WRITE FOR CATALOGUE AND PRICES.

**McEachren Heating and
Ventilating Co., GALT, ONT.**



Fan.

F. E. ATTEAUX & CO.

53 Colborne Street,
Toronto.

15 Lemoine Street, Montreal.

Boston, New York,
Philadelphia, Chicago, and
Gloversville, N.Y.

**Dyewood Extracts,
One Dip Alizarines,
Aniline Colors,
Dyestuffs and
Chemicals.**