

was constructed on the premises, and each microscope provided with a 4-volt lamp for work after dark.

Several electrically heated incubators were also fitted up, and last Easter permission was obtained to put in sky-lights and to fit up a water-supply.

With the possibility of a continuous source of heat, we were able to consider paraffin embedding.

Serious difficulty has been encountered in the construction of a satisfactory automatic electric thermostat for the embedding bath. We have recently secured a Hearson's capsule, and an improved model of embedding bath is now being made. Nevertheless, a considerable quantity of material has been satisfactorily imbedded, and a beginning is being made with the technique of Cytology. Last Christmas a first-class microtome (Minot model by Leitz, cutting to 1a) was purchased, but the rigours of the winter, followed almost instantly by those of a phenomenally hot May and June, made it impossible to start microtomy until recently.

It has been impossible to do practical work in Zoology, but Dr. Lechmere's lectures have continued to draw an enthusiastic band of students.

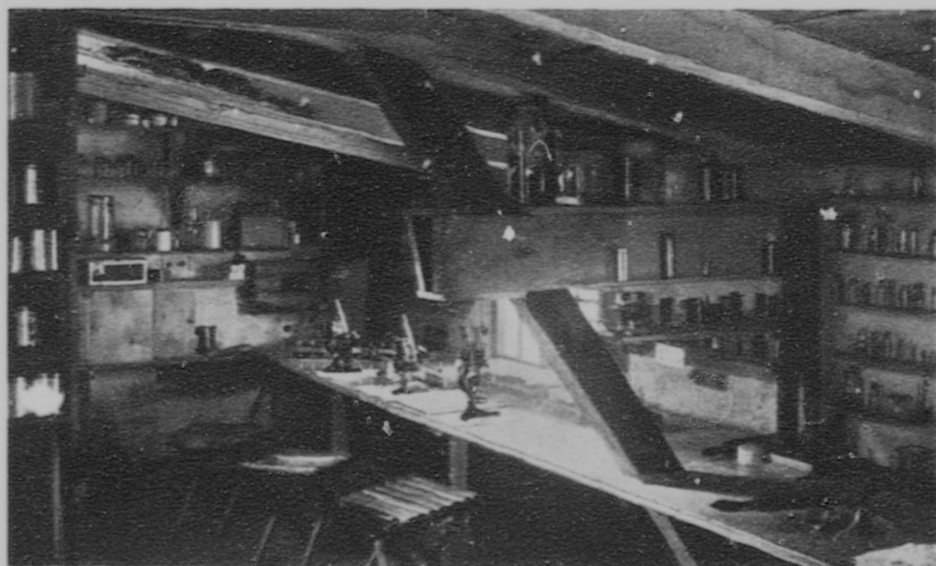
His course so far has covered:—Protozoa (one term); Coelenterata (one term); Vermes (three terms); Echinodermata (one term).

And he has just finished the second term of his course on Mollusca.

At the same time he has also started a course on Invertebrate Embryology. Animal physiology has been very exhaustively treated (again only theoretically) by Mr. S. R. Edge, B.A., Cantab. Practical instruction has been given in the testing of agricultural seeds by Mr. A. Hill, B.Sc., Aberdeen, and for this course a large electrically-heated incubator was constructed.

This summer, new space was allotted to science, and this was made use of to accommodate a library, shared jointly by the biologists, chemists and physicists. The library provides a seating accommodation for working, and contains over 500 volumes, mostly the property of the science staff, but many also supplied by the Board of Education.

At the present "Nature" is at once our only periodical and only link with scientific activity outside."



View of the laboratory, Rühlchen Camp, Germany.