

An Advance in Experiment Station Work

By R. W. WADE.

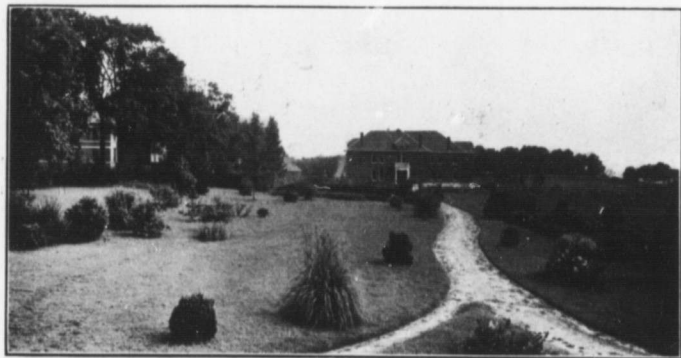


HERE are now in the United States of America eight hundred and forty-five persons engaged in experiment station work.

This vast country, with its varied products, its many climates and its innumerable types of soil, affords a wide field for exploration. In this work, as in other occupations, financial

economy, have lessened the efficiency of their stations, and while some of the most valuable work may have come from these stations, it is only as the exception which proves the rule.

Station work undergoes a process of evolution. At first the easier, simpler problems are attacked, and as the station grows stronger more advanced work is taken up, although the every-



A Portion of the Grounds at the Arkansas Experiment Station.

strength is one important factor, and those States which have responded generously to the call for funds, have been getting the benefit of the services of a greater number of well trained men. As a result, their agricultural problems have been more nearly worked out. The less progressive States by their unwise

day, practical problems of farm and orchard are not neglected. The workers begin to take a broader view, and as a result undertake more difficult problems. They will attempt to discover the fundamental truth, and will not be satisfied with careless generalities, which sometimes passes for it.