

# The St. Thomas Journal

TRADE EDITION.

ST. THOMAS, ONTARIO, DECEMBER, 1894.

TRADE EDITION.

## St. Thomas The Railway ...City

**S**T. THOMAS, the Railway City, is situated eight miles north of Lake Erie and midway between the Niagara and Detroit Rivers. This places it in the very centre of that beautiful and fertile district which forms the south-western part of the Province of Ontario. Look at a map of North America, and you will observe that Ontario forms a peninsula dipping deep down almost into the heart of the continent, its southern, western and eastern borders lapped by the waters of three of the greatest fresh water lakes in the world—Erie, Huron and Ontario. The influence of these great bodies of water upon the climate of Western Ontario is very marked, modifying the rigors of winter, and helping to temper the heat of summer in a manner which makes the climate exhilarating and salubrious. With such a climate, and with as fertile and well-wooded lands as can be found upon the continent, it is little wonder that this south-western peninsula has become famous for the variety and extent of its natural resources, and is looked upon by its inhabitants as one of the choicest portions of North America. From the peach orchards of the Niagara district to the vineyards of Essex, these southern counties in summer and autumn form an unbroken stretch of blushing orchards, yellowing grain and knee-deep meadows. The happy possessors of these bounteous gifts of nature are descendants of the best stock that England, Ireland and Scotland has sent out during the last century to people the land of "Westward Ho!" In intelligence, in morality, in steadiness of character, in industry, in enterprise, there are few, if any, communities on the continent which excel this people. They have a goodly heritage, and they are proving themselves not unworthy heirs.

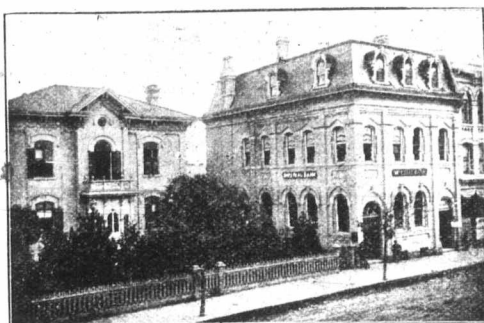
It is in the centre of this prosperous and progressive community that the city of St. Thomas is situated. It largely partakes in its characteristics of those qualities which we have credited to the people of the whole peninsula. Its population of eleven thousand souls is progressive and enterprising. Within the last twenty years the city has grown from a town of two thousand inhabitants to its present size, and each year has seen an advance in all that goes to make a successful city, in all that goes to increase the material welfare of a community, until to-day there is probably no city in the Dominion of Canada of the size of St. Thomas which is so well supplied with those modern conveniences of a municipal character which add so much to the attractiveness of urban life. Around its northern and western boundaries, one hundred feet below the level of the city, gushes a little stream, while on the south a winding, verdure clad ravine leads a streamlet from Pinafore Lake to the Creek. It is these ravines, encircling the city, developing in places to mile-wide valleys, which give character and force to the scenery, and make St. Thomas a "city set upon a hill." Five minutes walk from any portion of the town brings the visitor to the verge of one of these valleys, from whence the eye rests gratefully on a panorama of forest, stream and pasture.

The opportunities which these beautiful ravines and valleys afford the landscape gardener for effective display of his art are infinite, and are certain to be taken advantage of as the city grows in wealth. Already, one charming spot, in the rounding corner of a ravine carved out centuries ago by the rolling floods, has been purchased as a city park, and the winding roadway built adown its banks gives promise of what may some day develop into a ten-mile avenue around the city, following the sinuosities of the ravines, shaded by patriarchal trees, and giving to the eye a feast of pastoral scenery that irresistibly recalls the hills and vales of England.

Some glimpses of this scenery have been caught by the camera of the photographer, and transferred to these pages. Imperfect imitations of the originals as they are, they bear witness to the truth of the picture we have faintly drawn of the natural beauties of this, the most southerly city in the Dominion of Canada.

Other illustrations treat of what man has done for St. Thomas. Popularly known as "The Railway City," it certainly owes a large measure of its prosperity to the great lines of railway which its enterprise and liberality of its citizens have brought within its borders. Chief among these is the Canada Southern division of the Michigan Central, the head offices and workshop of which are located in St. Thomas, and add thousands of worthy citizens to its population. The Loop Line division of the Grand Trunk Railway and the Credit Valley division of the Canadian Pacific and the London and Port Stanley division of the Lake Erie and Detroit

River Railway make a quartette of great roads which serve St. Thomas. In addition to these the Courtright branch of the Michigan Central makes tributary to the city the rich and rapidly developing district between St. Thomas and the St. Clair River.

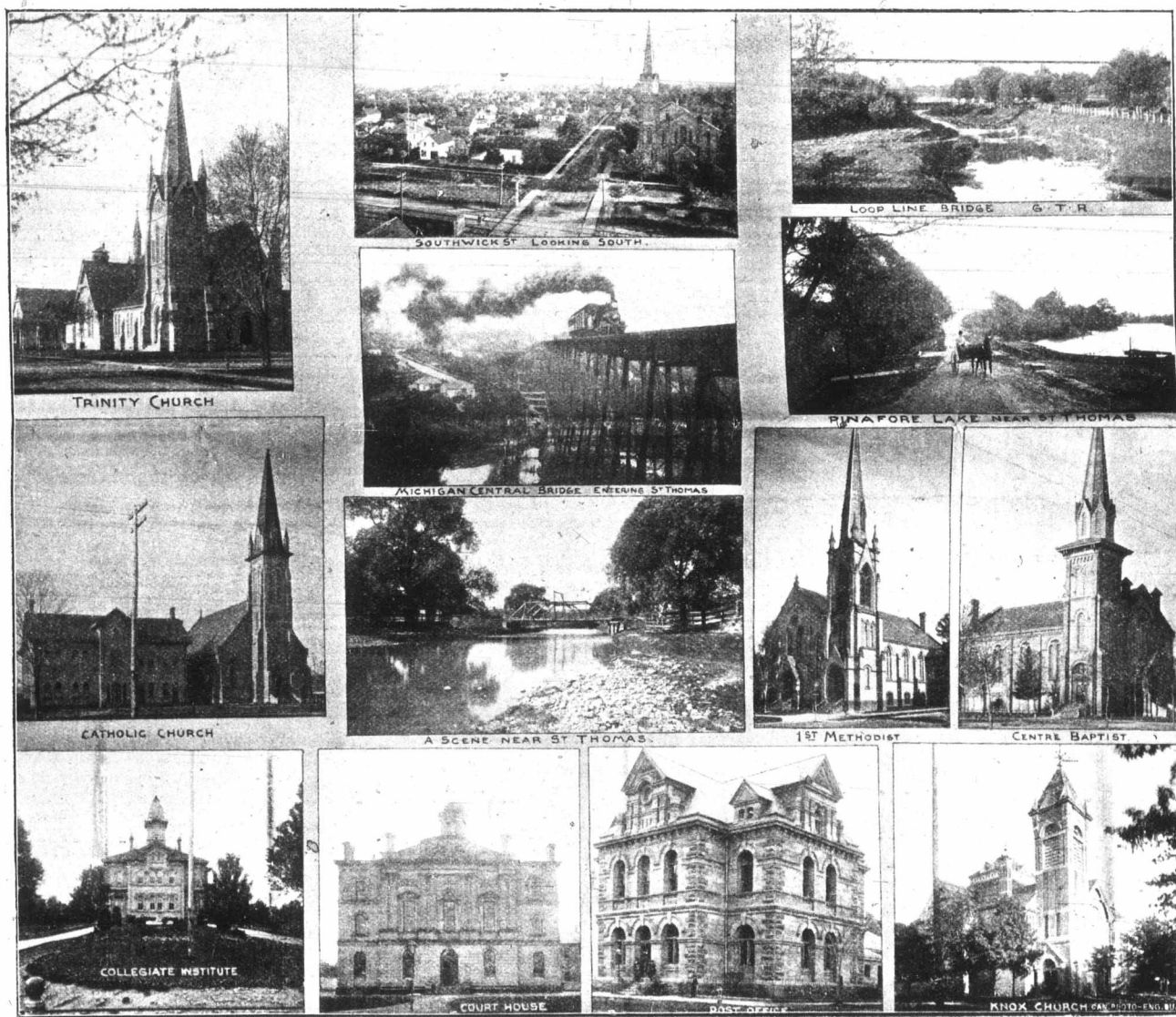


THE IMPERIAL BANK

This edition of THE JOURNAL is designed to convey, by pen and picture, some idea of the position, resources and advantages of St. Thomas. The manufacturers and merchants of the city have most liberally assisted in making the edition what it is, and it is hoped that direct advantageous results may flow to the city and its citizens from this publication.

### THE IMPERIAL BANK

THE Imperial Bank is a standard monetary institution that has an authorized capital of two million dollars, of which \$1,954,525 is paid up, and which has a rest fund of \$1,152,252. The head offices are in Toronto, but the bank has agencies all through Ontario and the Northwest, with agents or correspondents in all parts of the commercial world. It does a general banking business, and is conducted upon safe lines. The St. Thomas branch is located on the ground floor of a handsome three-story brick building on Talbot street, opposite the Grand Central Hotel, covering an area of 50 x 40 feet, and giving employment to six clerks. The local manager is in every sense of the word a local man. Mr. M. A. Gilbert is a Canadian and has made his home in St. Thomas all his life, and having been manager of the Imperial Bank since its establishment. He has been an ableman for No. 1 ward for many years, and proved himself one of the best chairmen the Finance Committee ever had. He was also president of the Board of Trade for several years, and played a very prominent and influential part in the establishment of both the old and new waterworks for the city. In fact, any project that has tended to the welfare and improvement of St. Thomas has had the hearty support and cordial approval of Mr. Gilbert. He has been secretary treasurer of the Gas Company since its inception, and also vice president of the South-western Loan Company. He has ever been one of our foremost citizens, having been an extensive exporter of produce prior to entering the service of the bank. The beautiful home and grounds of Mr. Gilbert on Margaret street, "Beechwood," are not to be surpassed anywhere in the Dominion, showing that Mr. Gilbert has a love for the beautiful as well as for the more exciting fields of business rivalry and enterprise.



VIEWS IN AND ABOUT ST. THOMAS

### H. MACPHERSON

H. MACPHERSON is a merchant tailor and dealer in gentlemen's furnishings, fur goods, hats and caps, etc., making a specialty of handling the celebrated "Christie hats." The business was established in 1878, and gives employment to the large number of thirty hands. Mr. Macpherson occupies the whole of first and third floors of two large adjoining brick buildings, one 75 x 25, the other 50 x 18, each three stories in height, at Nos. 335 and 339 Talbot street. In the clothing line Mr. Macpherson makes a specialty of fine ordered work, and for this purpose he carries a very large stock of imported and domestic tweeds, cloths, etc., much of which is imported direct. Mr. Macpherson is a native of Canada and has resided in St. Thomas for the past twenty-two years. In that time he has built up a very large trade, and has made for himself a reputation as a gentleman of correct business habits, and personally he commands the respect and esteem of all.

### W. R. BEVITT

MR. W. R. BEVITT carries on business as a dealer in wall paper, picture frames, plate glass, stained glass, leaded glass, etc., making a specialty of the three latter lines. He has been established in business twenty-two years and occupies the whole of the ground floor and basement of the large three-story brick building, 110 x 20, at No. 267 Talbot street. He is a native Canadian, and his name has frequently been mentioned for municipal honors, but he prefers a quiet private life. He gives employment to five hands. Mr. Bevitt is a thoroughly experienced business man.

### D. FERGUSON

MR. D. FERGUSON is a wholesale and retail dealer in boots and shoes, occupying the whole of the first floor of the handsome large three-story brick building at No. 279 Talbot street, his store covering a ground area of 100 x 22 feet, and giving employment to four hands. He has been in business for over twenty-three years, and has built up a very large trade with the people of the city and the surrounding country. In fact, his trade extends all over the large district of which St. Thomas is the centre. He makes a specialty of dealing in fine goods, and has achieved a very high reputation in this line. Mr. Ferguson is a Canadian by birth and has resided in St. Thomas nearly all his life. He has taken an active part in building up the city, and served four years in the council, holding the very important position of chairman of the finance committee. He is a gentleman of thorough business habits, and stands high in the commercial world, while personally he is very popular with all classes of the community. His name is being prominently connected with the mayoralty for 1895.

### F. C. JOST

MR. F. C. JOST carries on business as a dealer in watches, clocks, jewelry, silverware, etc., at No. 605 Talbot street, where he occupies the entire ground floor of a fine two-story brick building, 50 x 12 feet in area. He does a very large trade, having a high reputation for the quality of his work. He is a practical watchmaker of thirty-five years' experience, and pays special attention to repairing, particularly in the finer lines of watches, at which he is exceptionally skilled. Mr. Jost is a Frenchman by birth, and has been in business in this city for four years.