

Bill Has Joined the Army!

What Shall We Do at Harvest Time?

Throughout the length and breadth of this Western country the response to "King and Country" has been truly magnificent. Yes, "Bill" is in khaki. "Bill" may be your son or your hired man. Whoever he is, the fact remains you are short-handed, and the farmer feels his loss more than the average city business man. But what about the other side of the story? Who is going to take "Bill's" place? Who is going to help gather in the crop? Last year the hired-help problem was serious enough—this year it is critical. Food production is just as essential to assure the allies' victory as ammunition. But what's the use of producing if you cannot move the crop?

The Stewart Sheaf Loader

Is the practical solution of the harvest labor problem. It will put you on Easy Street. The "Stewart" is the greatest labor-saving harvesting machine made. More than that, it is not built to meet the emergencies of the moment nor to catch the farmer's penny. It has behind it the reputation of having made good and the endorsement of hundreds of our Western farmers—people YOU know. With these facts before you, you owe it to yourself to investigate the merits of the Stewart Sheaf Loader.

CUTS COSTS TO A MINIMUM

The "Stewart" pays by the grain it saves. It does the work of field pitchers and fewer bundle teams are required. "Stewart" owners have no such thing as a large wage and board bill bugaboo to face. In wet weather it requires no keep. Comparatively few of these machines can be manufactured this year. That is all the more reason why you should place your order early to avoid disappointment. Go into details while there is time. Write us to-day.

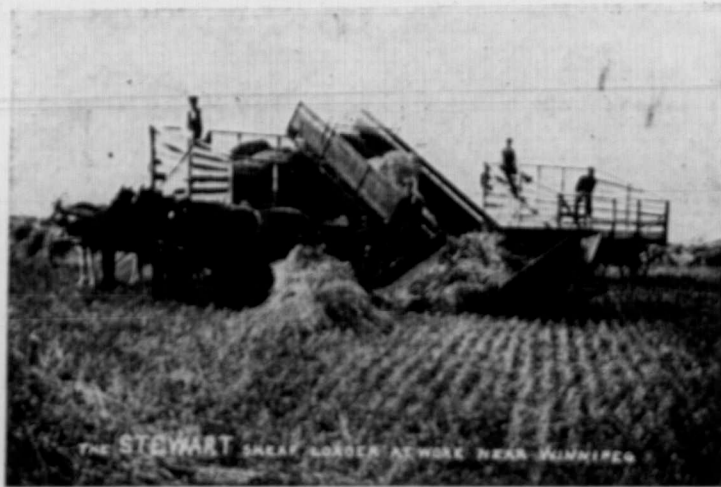
Read what these Farmers say about the Stewart Sheaf Loader:

When we say it SAVES MONEY, Dickson Bros., of Trezona, Sask., back us up in this letter:

"With the Loader we need only three teams and a man. We thereby save \$12.00 a day in wages, not counting the extra load saved."

When we say it SAVES TIME, Wm. P. McLachlan, Eakbank, Sask., proves it by telling us:

"I used a 40-64 Separator and had no trouble keeping it busy with the Loader and six bundle teams. I threshed 51,316 bushels of wheat and 1,000 bushels of oats in twenty-seven days, making an average of 2,300 bushels per day."



THE STEWART SHEAF LOADER AT WORK NEAR WINNIPEG

When we say it SAVES GRAIN, Mr. C. J. Turnbull, Manager of Steele, Briggs Seed Co., Ltd., Winnipeg, says:

"There is less shelling with a Loader than with regular pitchers and the work is vastly superior. I do not think on our whole 1,000 acres a wagon box full of loose straw could be raked after the Loader."

And A. A. Downey, Arlington Beach, says:

"After careful examination I am convinced that the Loader saves at least one bushel per acre over the old system of field pitchers."

THE STEWART SHEAF LOADER CO. LTD.

WINNIPEG

MAN.

LOUDEN BARN EQUIPMENT

FOR QUALITY

FOR SERVICE

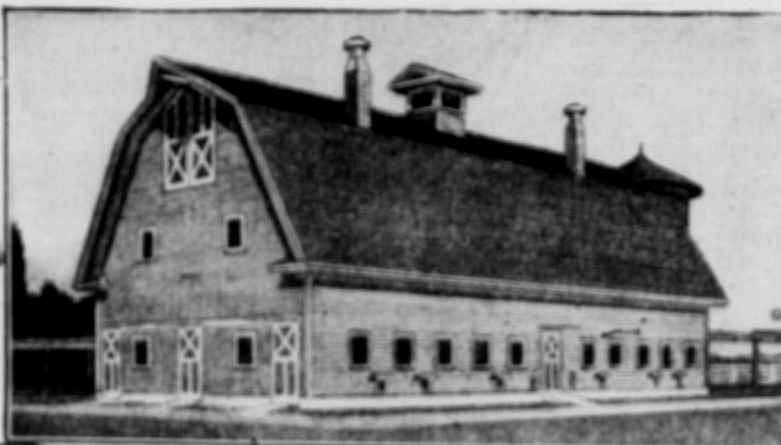
FOR SECURITY



Book of Barn Plans Free

Louden "Barn Plans" is not a catalogue of barn equipment. It is a complete and valuable book of reference and instruction on barn construction. The 112 pages of Louden Barn plans is full of dollar saving information—the best of ideas gathered by the Louden Company during many years of barn building, and barn equipment experience. 51 representative designs for cow barns, horse barns, general purpose barns and hog houses. In addition, there are 32 pages devoted to general construction problems, such as concrete work, laying floors, roof construction, ventilation, etc.

FILL OUT AND MAIL US THE COUPON FOR THIS FREE BOOK.



Louden equipment makes possible a clean, sanitary barn with a minimum of expense for upkeep. When cows are transferred from dark, dirty barns to Louden barns, the milk flow often increases from 15 to 25 per cent, and the labour of caring for the herd is reduced from one-third to one-half.

The cost of installing Louden equipment is surprisingly small, and is just as great an economy for the man with a half dozen animals as for a man with a hundred. The percentage of labour saved is the same.

The Louden Line includes:

- Litter Carriers,
- Feed Carriers,
- Horse Stalls,
- Cow Pens,
- Hay Carriers,
- Cow Stalls,
- Water Fountains,
- Bull Pens,
- Hog Pens,
- Barn Door Hangers.

Catalogues Free

Please send me 2 copies of Louden Barn Plans. I expect to build (or remodel) barn for _____ acres and _____ horses.

Barn will be about _____ x _____ ft.

Name _____

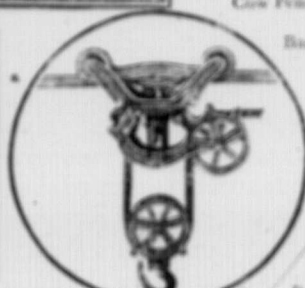
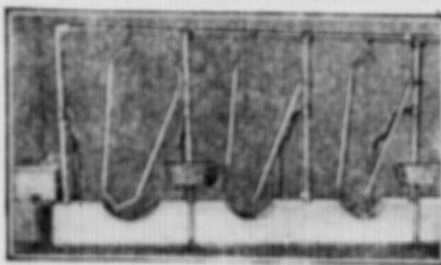
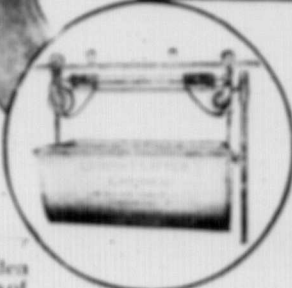
P.O. _____

Prov. _____

LOUDEN MACHINERY CO.

11 CRIMEA ST., GUELPH, ONT.

VANCOUVER, B.C. WINNIPEG, MAN. ST. JOHN, N.B.



at
H
in
re
fa
of
th
is
de
re
wo
y
fo
to
co
tis
ste
W
the
G
we
to
war
ing
the
the
14
mag
and
rial
the
plet
just
man
tick
stres
hotel
Th
as
1
battl
torpe
mari

W
at
St
away
reest
and
genie
dian,
farm
wood,
tatis,
but
es
identif
tion
e
and
th
work
y
comme
the
No
the
ear
nada
s
daye
and
tra
nipeg,
ter
shaffer
ent
C.I
not
lan
tine
will
develop
Middle
engron
tion
of
projects
Western
was
a
the
prod
that
the
ped
servic