

## The Aylmer Three-Wheeled Wagon and Stock Scale

Aylmer Scale is the only 3-point bearing scale on the market.

The only scale that will weigh correctly on an uneven surface.

The wheels are large and encased.

All material and workmanship are first-class and guaranteed.

Capacity of this scale, 2,000 lbs.

Size of platform without rack, 24"x36".

Why should YOU not weigh your stock and grain and ascertain where you are making money, so as to enable you to increase your profits?

This scale will pay for itself in a short time.

Mail us \$26 to-day, and we will deliver this scale, with Government certificate attached, to your nearest railway station, if in Ontario, or \$35 with cattle rack.

Let us hear from you.

The Aylmer Pump & Scale Co., Limited, Aylmer, Ontario

### Up-to-Date Specialties For Farmers And Gardeners

Things you need—implements and tools that should be on every truck garden and farm. Our way of making these specialties assures adaptability, strength and service at the minimum price for the best goods of their kind on the market.



will slice or shred from 1 to 2 bushels per minute. Fastest machine made—easiest running. Tapering cylinder—10 best steel knives.

**"Eureka" Sanitary Churn**  
Barrel of finest stoneware—top of clear pressed glass. Churns by hand lever. The only sanitary churn made. 3 sizes—8, 10 and 12 gallons.

**"Eureka" Wagon Box and Rack**  
Without wings and ladder, it is a perfect wagon box. With them, it is the best Hay, Stock, Wood, Poultry, Oen or Fruit Rack ever invented. Adjusted to any position in a minute without wrench, hook or rope.

**"Eureka" Combination Anvil**  
Best iron anvil, with vice, pipe vice and drill attachment, and saw clamps. Just what you need for repairing tools and machinery. Weighs 60 pounds.

**The "Eureka" Seed Drill**  
will handle the most delicate seed without bruising or breaking, and will sow evenly to the last seed.

**Write for Catalogue**  
Every farmer, who wants to make money out of his farm, ought to have our new catalogue. It shows our TOOLS, Rakes, Hoes and Machines as they are, and describes their construction in detail. Write for free copy.

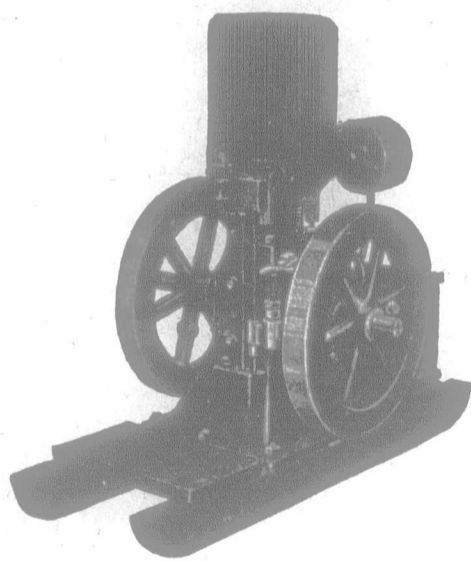
Eureka Planter Co. Limited. 137 Winnett St. Woodstock, Ont. 24

## The Call of the North

Do you know of the many advantages that New Ontario, with its millions of fertile acres, offers to the prospective settler? Do you know that these rich agricultural lands, obtainable free, and at a nominal cost, are already producing grain and vegetables second to none in the world.

For literature descriptive of this great territory, and for information as to terms, homestead regulations, settlers' rates, etc., write to

**H. A. MACDONELL**  
Director of Colonization  
Parliament Bldgs. TORONTO ONTARIO



## THE POPULAR London Engine

Can be operated with satisfaction with no experience.

London Engines are shipped complete ready to run.

Quality at a low price.

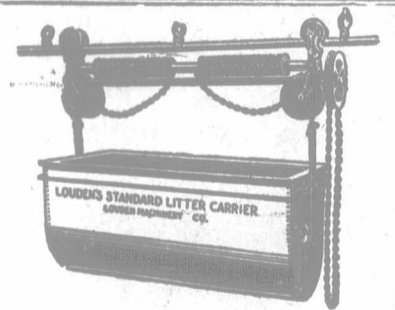
Do more work for the same amount of fuel.

Guaranteed against freezing in vertical type. Sizes: 1½, 2½, 3½ and 4½ H.-P. Other sizes: 8 and 12 H.-P. horizontal.

**London Gas Power Co., Limited**

Ask for catalogue No. 18.

London, Canada



## The Carrier For You

IN choosing a litter carrier, one should consider all of the equipment necessary for a complete outfit: Carrier, Track, Hangers, Switches, and Swing Pole fittings. Do not place an order before learning of the many distinctive features to be found in Louden Equipment.

## LOUDEN Litter Carrier

—is simple in construction, and easily operated. Carrier box is made of heavy galvanized steel, strongly reinforced with angle iron. Worm hoisting gear insures maximum speed and power. Track is of high carbon steel and is easily installed.

Write to-day for Illustrated Catalogue.

Our architectural department will supply free Barn plans.

**The LOUDEN MACHINERY CO.**  
Dep: 161 - GUELPH, Ont.

### Johnny on the Spot

I thrive on hard work—just "eat it up"—and it costs but a trifle to keep my 1½ H.P. "hustle" going on gasoline. I will give you perfect service because I am one of the famous

**GILSON "Goes Like Sixty"**  
Engines—the line that exactly meets every farm need with a high quality engine at a low price. It will pay you to write for full particulars of Gilson "Goes Like Sixty" Engines. 1 to 10 H.P.

**\$47.50**  
Gilson Mfg. Co., Ltd. 1009 York St. Guelph, Canada

## Milk Wanted

For milk route in Windsor  
WALTER N. KNIGHT  
Windsor, Ont.

## Use Coal Oil—12c. For 10 Hours

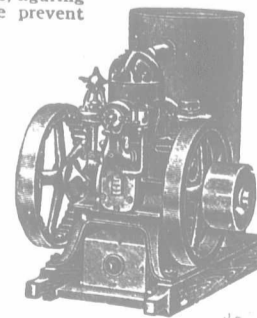
This is the cost for Coal Oil per horse power to run this engine, figuring the price at 16c. a gallon. Don't let the high price of gasoline prevent you from having cheap, safe and dependable farm power.

# ELLIS ENGINES

Will develop more power on a gallon of the cheapest coal oil than other engines will do on a gallon of high-priced gasoline; no danger of fire or explosion. Simplest engine on the market, only three working parts; starts without cranking; runs either way; no excessive weight; guaranteed 10 years and will last a life-time. Anyone can run it; very complete instructions furnished.

**Make Us Prove It** Don't let any competitor or agent tell you that Ellis Engines will not give you all satisfaction; ask anyone who saw them run at Toronto Exhibition. I let us prove it to you under actual working conditions day's trial, freight prepaid, so you will have no delay or trouble to pay. If we don't prove our claims, send the engine back. Write for our catalogue and opinions of users in all parts of Canada.

**ELLIS ENGINE CO., 94 Mullett Street, Detroit, Mich.**



Build Silos, Dwelling, or any class of building from Concrete Block. The London Adjustable Concrete Block Machine makes every kind and size of block. High grade. Moderate price. We manufacture a full line of Concrete Machinery. Tell us your requirements.

**LONDON CONCRETE MACHINERY CO.**  
Dept. B. London, Ont.

**BOOTS**—Save nearly 50% buying from Factory direct. Agents Wanted. Send postage 4c. for large illustrated list and particulars. British Boot Co., 105 Portland Sq., Bristol, England.