

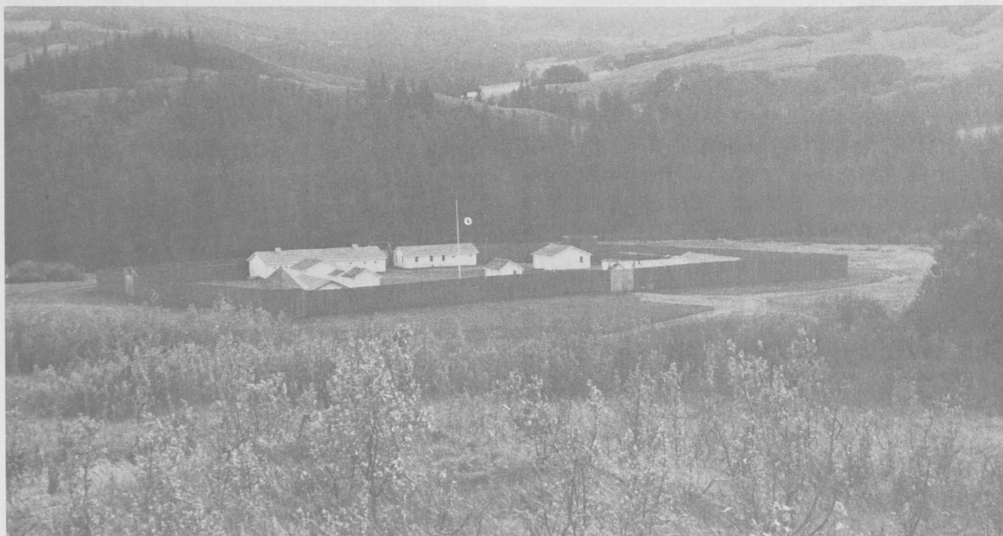
must learn to change their behavior, in addition to studying everything from criminal justice and human relations, to small vessels regulations and report writing.

Perhaps the most impressive thing about Depot is a policy that has been in effect from the earliest days of the Force. That is, that the Force has used force on so few occasions. Corporal Shaver indicated that the idea is to solve problems through reason and law — not brute strength. Perhaps this is one of the more obvious differences between the settlement of the Canadian West as compared to the American West. The words of Crowfoot and Sitting Bull, with respect to the Force, stand in marked contrast to words and events on the American side of the border at that time.

There are differences today, as well. In the United States each state, county, and local community has its own law enforcement agencies. The concept of

a federal police force seems to have its advantages. First of all, it eliminates the sort of political influence and provincialism that can sometimes taint smaller, local organizations. Secondly, it ensures a training program that is uniform and up to the highest standards. Next, a more disciplined force is possible. And, finally, a great deal of the individual constable's authority rests on the reputations of those who came before him. Tradition and experience breed respect. Today's recruit has the benefit, not only of what must be one of the most modern police organizations in the world, but also one of the most famous. As others have pointed out, where else does a police force serve proudly as a national symbol respected around the globe?

From Regina, we drove to Fort Walsh, restored to its original appearance and set in the beautiful Cypress Hills. Fort Walsh served as Headquarters for the Force from 1878 to 1882. It is where Sitting Bull and the Sioux made camp after the Custer massacre. We continued



FORT WALSH NATIONAL HISTORIC PARK Located on the banks of Battle Creek, near Maple Creek, Sask., the RCMP established a horse ranch on the site of the original Fort Walsh, in 1942. The buildings were constructed in the style of the old fort, and since 1968 it has served as an historical site, restored to its original appearance.