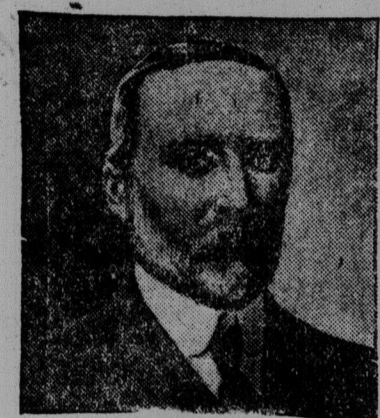


My Own Son Was a Martyr to Dyspepsia "Fruit-a-tives" Completely Cured Him



ALEX LARUE.

Inkerman, Ont., Sept. 23, 1910. "Fruit-a-tives" is the best remedy I keep for sale. I am in the General Store business, at the above address, and have been a resident of Inkerman for thirty-seven years, and since I started this store (four years ago) I have found your remedy the most satisfactory one I have sold.

The sales of "Fruit-a-tives" are increasing by leaps and bounds. Thousands of people who have been cured by "Fruit-a-tives" have written me the good news that thousands of others and these in turn are recommending it to still others.

The Canadian Oil Bowlers Win Four Points. The Canadian Oil Company bowlers took four points from the M. R. A. Ltd. team in the Commercial Bowling League game on Black's alleys last night.

AMUSEMENTS "NICKEL" - Everything New Monday! SANTA CLAUS At The Mainline A NEW VERSION Very Fun

NEWS OF THE PICTURES Tolstoi's Funeral Capture of Great Whale, Dunkirk Paris Fashions This Winter British Parliament Dissolved

EMORY WHITE CONCERT "Good-Bye" - Toilet "Don't You Mind Honey"

LYRIC AN INDIAN MAID'S CHOICE THE TRICK THAT FAILED BLACK BART DUTCH TYPES

First of Special Christmas Features BROOKS AND KINGMAN Comedy Acrobats without a Par!

A COZY HOUSE AND PLEASANT PASTIME TO WIN E' NIGHTS UNIQUE The King of Thule

GEM - Southern "For a Woman's Honor" THREE BIG FEATURES!

VICTORIA RINK 62nd and 28 Pieces GRAND OPENING TUES. EVENING Dec. 20

To Let For Business Purposes Premises now occupied by Cecil Theatre, 160 Union street.

OPERA HOUSE 3 Nights, Dec. 15, 16, 17 Fred G. Parker Presents the Beautiful Scotch Comedy Drama ANNIE LAURIE

DAVID LITGOC In the Role of ROBERT REID The Scotch Volunteer.

FOR FIFTY YEARS THE MOST FIDELITY MADE FROM THE BEST OF THE BEST

FOR THE STOMACH LIVER BOWELS AND KIDNEYS

FOR FIFTY YEARS THE MOST FIDELITY MADE FROM THE BEST OF THE BEST

FOR THE STOMACH LIVER BOWELS AND KIDNEYS

FOR FIFTY YEARS THE MOST FIDELITY MADE FROM THE BEST OF THE BEST

FOR THE STOMACH LIVER BOWELS AND KIDNEYS

FOR FIFTY YEARS THE MOST FIDELITY MADE FROM THE BEST OF THE BEST

FOR THE STOMACH LIVER BOWELS AND KIDNEYS

FOR FIFTY YEARS THE MOST FIDELITY MADE FROM THE BEST OF THE BEST

FOR THE STOMACH LIVER BOWELS AND KIDNEYS

FOR FIFTY YEARS THE MOST FIDELITY MADE FROM THE BEST OF THE BEST

FOR THE STOMACH LIVER BOWELS AND KIDNEYS

FOR FIFTY YEARS THE MOST FIDELITY MADE FROM THE BEST OF THE BEST

FOR THE STOMACH LIVER BOWELS AND KIDNEYS

SPORT NEWS OF A DAY; HOME AND ABROAD

St. J. B. Take Three Points.

In the Inter-Society Bowling League last evening on St. Peter's alleys the St. John Baptist quietest succeeded in annexing three points from the Single Men, who had to be content with one.

They had previously been treated by physicians without being cured, but I advised them to try "Fruit-a-tives," and since taking that remedy their troubles have vanished.

My own son was a martyr to the same complaint, or Dyspepsia, and after a short course of Fruit-a-tives he is enjoying the best of health. I recommend "Fruit-a-tives," on every possible occasion, and would say that if every general store keeper, who sells medicines, would keep "Fruit-a-tives" in stock, I think it would aid the sale of "Fruit-a-tives."

You have my authority to publish this letter along with my photo, if you think it would aid the sale of "Fruit-a-tives."

(Signed) ALEX LARUE.

The sales of "Fruit-a-tives" are increasing by leaps and bounds. Thousands of people who have been cured by "Fruit-a-tives" have written me the good news that thousands of others and these in turn are recommending it to still others.

The Canadian Oil Bowlers Win Four Points. The Canadian Oil Company bowlers took four points from the M. R. A. Ltd. team in the Commercial Bowling League game on Black's alleys last night.

AMUSEMENTS "NICKEL" - Everything New Monday! SANTA CLAUS At The Mainline A NEW VERSION Very Fun

NEWS OF THE PICTURES Tolstoi's Funeral Capture of Great Whale, Dunkirk Paris Fashions This Winter British Parliament Dissolved

EMORY WHITE CONCERT "Good-Bye" - Toilet "Don't You Mind Honey"

LYRIC AN INDIAN MAID'S CHOICE THE TRICK THAT FAILED BLACK BART DUTCH TYPES

First of Special Christmas Features BROOKS AND KINGMAN Comedy Acrobats without a Par!

A COZY HOUSE AND PLEASANT PASTIME TO WIN E' NIGHTS UNIQUE The King of Thule

GEM - Southern "For a Woman's Honor" THREE BIG FEATURES!

VICTORIA RINK 62nd and 28 Pieces GRAND OPENING TUES. EVENING Dec. 20

To Let For Business Purposes Premises now occupied by Cecil Theatre, 160 Union street.

OPERA HOUSE 3 Nights, Dec. 15, 16, 17 Fred G. Parker Presents the Beautiful Scotch Comedy Drama ANNIE LAURIE

DAVID LITGOC In the Role of ROBERT REID The Scotch Volunteer.

FOR FIFTY YEARS THE MOST FIDELITY MADE FROM THE BEST OF THE BEST

FOR THE STOMACH LIVER BOWELS AND KIDNEYS

FOR FIFTY YEARS THE MOST FIDELITY MADE FROM THE BEST OF THE BEST

FOR THE STOMACH LIVER BOWELS AND KIDNEYS

FOR FIFTY YEARS THE MOST FIDELITY MADE FROM THE BEST OF THE BEST

FOR THE STOMACH LIVER BOWELS AND KIDNEYS

FOR FIFTY YEARS THE MOST FIDELITY MADE FROM THE BEST OF THE BEST

FOR THE STOMACH LIVER BOWELS AND KIDNEYS

FOR FIFTY YEARS THE MOST FIDELITY MADE FROM THE BEST OF THE BEST

FOR THE STOMACH LIVER BOWELS AND KIDNEYS

FOR FIFTY YEARS THE MOST FIDELITY MADE FROM THE BEST OF THE BEST

FOR THE STOMACH LIVER BOWELS AND KIDNEYS

FOR FIFTY YEARS THE MOST FIDELITY MADE FROM THE BEST OF THE BEST

FOR THE STOMACH LIVER BOWELS AND KIDNEYS

FOR FIFTY YEARS THE MOST FIDELITY MADE FROM THE BEST OF THE BEST

FOR THE STOMACH LIVER BOWELS AND KIDNEYS

Stanton 75 78 95 246 82

The following is the standing of the teams in this league up to date:

Won. Lost. P.C. Tigers 13 7 65.217 Y.M.C.A. 12 12 50.000

The next game in this league will be on Jan. 3.

Yachting Commodore Orders New One. President, B. L. Dec. 17.—Monte F. Plant, commodore of the New York Yacht Club, will have a new steel schooner this season to compete with the outlaws of the "American" schooner fleet.

In view of the fact and the rumor that Mr. Cochran will bring the Westward to race this coming season, yachting circles are anticipating some exciting sport on the water.

Mr. Plant's new schooner will be 66 feet on the water line, 120 feet over and 27 feet 6 inches beam. She will have 100 horse power.

Mr. Plant's new schooner will be 66 feet on the water line, 120 feet over and 27 feet 6 inches beam. She will have 100 horse power.

Mr. Plant's new schooner will be 66 feet on the water line, 120 feet over and 27 feet 6 inches beam. She will have 100 horse power.

Mr. Plant's new schooner will be 66 feet on the water line, 120 feet over and 27 feet 6 inches beam. She will have 100 horse power.

Mr. Plant's new schooner will be 66 feet on the water line, 120 feet over and 27 feet 6 inches beam. She will have 100 horse power.

Mr. Plant's new schooner will be 66 feet on the water line, 120 feet over and 27 feet 6 inches beam. She will have 100 horse power.

Mr. Plant's new schooner will be 66 feet on the water line, 120 feet over and 27 feet 6 inches beam. She will have 100 horse power.

Mr. Plant's new schooner will be 66 feet on the water line, 120 feet over and 27 feet 6 inches beam. She will have 100 horse power.

Mr. Plant's new schooner will be 66 feet on the water line, 120 feet over and 27 feet 6 inches beam. She will have 100 horse power.

Mr. Plant's new schooner will be 66 feet on the water line, 120 feet over and 27 feet 6 inches beam. She will have 100 horse power.

Mr. Plant's new schooner will be 66 feet on the water line, 120 feet over and 27 feet 6 inches beam. She will have 100 horse power.

Mr. Plant's new schooner will be 66 feet on the water line, 120 feet over and 27 feet 6 inches beam. She will have 100 horse power.

Mr. Plant's new schooner will be 66 feet on the water line, 120 feet over and 27 feet 6 inches beam. She will have 100 horse power.

Mr. Plant's new schooner will be 66 feet on the water line, 120 feet over and 27 feet 6 inches beam. She will have 100 horse power.

Mr. Plant's new schooner will be 66 feet on the water line, 120 feet over and 27 feet 6 inches beam. She will have 100 horse power.

Mr. Plant's new schooner will be 66 feet on the water line, 120 feet over and 27 feet 6 inches beam. She will have 100 horse power.

Mr. Plant's new schooner will be 66 feet on the water line, 120 feet over and 27 feet 6 inches beam. She will have 100 horse power.

Mr. Plant's new schooner will be 66 feet on the water line, 120 feet over and 27 feet 6 inches beam. She will have 100 horse power.

Mr. Plant's new schooner will be 66 feet on the water line, 120 feet over and 27 feet 6 inches beam. She will have 100 horse power.

Mr. Plant's new schooner will be 66 feet on the water line, 120 feet over and 27 feet 6 inches beam. She will have 100 horse power.

Mr. Plant's new schooner will be 66 feet on the water line, 120 feet over and 27 feet 6 inches beam. She will have 100 horse power.

Mr. Plant's new schooner will be 66 feet on the water line, 120 feet over and 27 feet 6 inches beam. She will have 100 horse power.

Mr. Plant's new schooner will be 66 feet on the water line, 120 feet over and 27 feet 6 inches beam. She will have 100 horse power.

Mr. Plant's new schooner will be 66 feet on the water line, 120 feet over and 27 feet 6 inches beam. She will have 100 horse power.

Mr. Plant's new schooner will be 66 feet on the water line, 120 feet over and 27 feet 6 inches beam. She will have 100 horse power.

Mr. Plant's new schooner will be 66 feet on the water line, 120 feet over and 27 feet 6 inches beam. She will have 100 horse power.

Mr. Plant's new schooner will be 66 feet on the water line, 120 feet over and 27 feet 6 inches beam. She will have 100 horse power.

Mr. Plant's new schooner will be 66 feet on the water line, 120 feet over and 27 feet 6 inches beam. She will have 100 horse power.

Mr. Plant's new schooner will be 66 feet on the water line, 120 feet over and 27 feet 6 inches beam. She will have 100 horse power.

Mr. Plant's new schooner will be 66 feet on the water line, 120 feet over and 27 feet 6 inches beam. She will have 100 horse power.

Mr. Plant's new schooner will be 66 feet on the water line, 120 feet over and 27 feet 6 inches beam. She will have 100 horse power.

is sold in quarter, half and pound packages. A 25-cent package of 40 cents is a full pound plus the package.

A pound package makes 200 cups. At all grocers.

Y.M.C.A. 12 12 50.000

Y.M.C.A. 12 12 50.000

Y.M.C.A. 12 12 50.000

Y.M.C.A. 12 12 50.000

Y.M.C.A. 12 12 50.000

Y.M.C.A. 12 12 50.000

Y.M.C.A. 12 12 50.000

Y.M.C.A. 12 12 50.000

Y.M.C.A. 12 12 50.000

Y.M.C.A. 12 12 50.000

Y.M.C.A. 12 12 50.000

Y.M.C.A. 12 12 50.000

Y.M.C.A. 12 12 50.000

Y.M.C.A. 12 12 50.000

Y.M.C.A. 12 12 50.000

Y.M.C.A. 12 12 50.000

Y.M.C.A. 12 12 50.000

Y.M.C.A. 12 12 50.000

Y.M.C.A. 12 12 50.000

Y.M.C.A. 12 12 50.000

Y.M.C.A. 12 12 50.000

Y.M.C.A. 12 12 50.000

Y.M.C.A. 12 12 50.000

Y.M.C.A. 12 12 50.000

Y.M.C.A. 12 12 50.000

Y.M.C.A. 12 12 50.000

Y.M.C.A. 12 12 50.000

Y.M.C.A. 12 12 50.000

Y.M.C.A. 12 12 50.000

Y.M.C.A. 12 12 50.000

Y.M.C.A. 12 12 50.000

Y.M.C.A. 12 12 50.000

Y.M.C.A. 12 12 50.000

Y.M.C.A. 12 12 50.000

Y.M.C.A. 12 12 50.000

Y.M.C.A. 12 12 50.000

Y.M.C.A. 12 12 50.000

Y.M.C.A. 12 12 50.000

Y.M.C.A. 12 12 50.000

Y.M.C.A. 12 12 50.000

Y.M.C.A. 12 12 50.000

Y.M.C.A. 12 12 50.000

Y.M.C.A. 12 12 50.000

Y.M.C.A. 12 12 50.000

Y.M.C.A. 12 12 50.000

Y.M.C.A. 12 12 50.000

Y.M.C.A. 12 12 50.000

Y.M.C.A. 12 12 50.000

Y.M.C.A. 12 12 50.000

Y.M.C.A. 12 12 50.000

Y.M.C.A. 12 12 50.000

Y.M.C.A. 12 12 50.000

Y.M.C.A. 12 12 50.000

Y.M.C.A. 12 12 50.000

Y.M.C.A. 12 12 50.000

Y.M.C.A. 12 12 50.000

Y.M.C.A. 12 12 50.000

Y.M.C.A. 12 12 50.000

Y.M.C.A. 12 12 50.000

Y.M.C.A. 12 12 50.000

Y.M.C.A. 12 12 50.000

Y.M.C.A. 12 12 50.000

Y.M.C.A. 12 12 50.000

Y.M.C.A. 12 12 50.000

Y.M.C.A. 12 12 50.000

Y.M.C.A. 12 12 50.000

Y.M.C.A. 12 12 50.000

Y.M.C.A. 12 12 50.000

Y.M.C.A. 12 12 50.000

Y.M.C.A. 12 12 50.000

Y.M.C.A. 12 12 50.000

Y.M.C.A. 12 12 50.000

Y.M.C.A. 12 12 50.000

Y.M.C.A. 12 12 50.000

Y.M.C.A. 12 12 50.000

Y.M.C.A. 12 12 50.000

Y.M.C.A. 12 12 50.000

Y.M.C.A. 12 12 50.000

Y.M.C.A. 12 12 50.000

Y.M.C.A. 12 12 50.000

Y.M.C.A. 12 12 50.000

Y.M.C.A. 12 12 50.000

Y.M.C.A. 12 12 50.000

Y.M.C.A. 12 12 50.000

Y.M.C.A. 12 12 50.000

Y.M.C.A. 12 12 50.000

Y.M.C.A. 12 12 50.000

Y.M.C.A. 12 12 50.000

Y.M.C.A. 12 12 50.000

Y.M.C.A. 12 12 50.000

Y.M.C.A. 12 12 50.000

Y.M.C.A. 12 12 50.000

Y.M.C.A. 12 12 50.000

Y.M.C.A. 12 12 50.000

Y.M.C.A. 12 12 50.000

Y.M.C.A. 12 12 50.000

Y.M.C.A. 12 12 50.000

Y.M.C.A. 12 12 50.000

Y.M.C.A. 12 12 50.000

Y.M.C.A. 12 12 50.000

Y.M.C.A. 12 12 50.000

Y.M.C.A. 12 12 50.000

Y.M.C.A. 12 12 50.000

Y.M.C.A. 12 12 50.000

Y.M.C.A. 12 12 50.000

Y.M.C.A. 12 12 50.000

Y.M.C.A. 12 12 50.000