

UNPRECEDENTED ATTRACTION
OVER ONE-QUARTER OF A MILLION DISTRIBUTED**L.S.L.**Louisiana State Lottery Company
(Incorporated by the Legislature for Educational and Charitable purposes, its franchise made a part of the present State Constitution, in 1878, by a vote of overwhelming popular vote.)To Continue Until January 1, 1895
Its GRAND EXTRAORDINARY DRAWINGS take place Semi-Annually (June and December), and its GRAND SINGLE NUMBER DRAWINGS take place in each of the other ten months of the year, and are all drawn in public, at the Academy of Music, New Orleans, La.

FAMED FOR TWENTY YEARS FOR INTEGRITY OF ITS DRAWINGS AND PROMPT PAYMENT OF PRIZES.

Attended as follows:

We do hereby certify that we supervised the arrangements for all the Monthly and Semi-Annual Drawings of the Louisiana State Lottery Company, and in person managed and controlled the drawings, and that the same were conducted with honesty, fairness, and in good faith toward all parties, and we authorize the Company to use our certificates, with fac-similes of our signatures attached, in its advertisements.

*Col. J. J. Villere**J. J. Villere**M. A. Leblanc*

Commissioners

Col. J. J. Villere and Col. M. A. Leblanc as one of our Commissioners to supervise our Monthly and Semi-Annual drawings. Col. J. J. Villere always selected the balls to represent him at the drawings whenever he was absent. Col. Villere has already supervised nine of our drawings.

We do hereby certify that we supervised the arrangements for all the Monthly and Semi-Annual Drawings of the Louisiana State Lottery Company, and in person managed and controlled the drawings, and that the same were conducted with honesty, fairness, and in good faith toward all parties, and we authorize the Company to use our certificates, with fac-similes of our signatures attached, in its advertisements.

R. M. WADSWORTH, Pres. Louisiana National Bank.
J. M. HENSON, Pres. State National Bank.
A. B. HAWES, Pres. New Orleans National Bank.
CARL KOHN, President Union National Bank.**THE MONTHLY \$5 DRAWING**

WILL TAKE PLACE

At the Academy of Music, New Orleans.

TUESDAY, APRIL 11, 1893.

CAPITAL PRIZE, - \$75,000

100,000 Numbers in the Wheel.

LIST OF PRIZES.	
1 PRIZE OF \$75,000	\$75,000
1 PRIZE OF 20,000	20,000
1 PRIZE OF 10,000	10,000
1 PRIZE OF 5,000	5,000
2 PRIZES OF 2,500 each	5,000
5 PRIZES OF 1,000 each	5,000
25 PRIZES OF 500 each	12,500
100 PRIZES OF 200 each	20,000
250 PRIZES OF 100 each	25,000
500 PRIZES OF 50 each	25,000
1,000 PRIZES OF 25 each	25,000
APPROXIMATION PRIZES.	
100 Prizes of \$100 each	\$10,000
100 Prizes of 50 each	5,000
100 Prizes of 25 each	2,500
TERMINAL PRIZES.	
999 Prizes of \$20 each	19,980
999 Prizes of 10 each	9,980
5,000 Prizes, amounting to	\$25,000

PRICE OF TICKETS:

Whole Tickets at \$5; Two-Fifths \$2;
One-Fifth \$1; One-Tenth 50c;
One-Twentieth 25c.Club Rates. 11 Whole Tickets or their equivalent in fractions for \$50.
Special rates to agents. Agents wanted everywhere.

IMPORTANT.

Send Money by Express at our Expense
in Sums not less than Five Dollars,
on which we will pay all charges, and we prepay Express Charges on TICKETS and LISTS OF PRIZES forwarded to correspondents.

Address PAUL CONRAD, NEW ORLEANS, LA.

Give full address and make signature plain.

Congress having lately passed laws prohibiting the use of the mails to ALL LOTTERIES, we use the Express Companies in answering correspondents and sending Lists of Prizes.

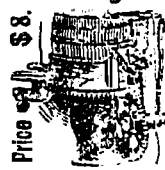
The official Lists of Prizes will be sent on application to all Local Agents, after every drawing in any quantity, by Express, FREE OF CHARGE.

ATTENTION—The present charter of the Louisiana State Lottery Company, which is part of the Constitution of the State, and by decision of the SUPREME COURT OF THE UNITED STATES, is an inviolable contract between the State and the Lottery Company, will remain in force UNTIL 1895.

In buying a Louisiana State Lottery Ticket, see that the ticket is dated at New Orleans; that the Prize drawn to this number is payable at New Orleans; that the ticket is signed by PAUL CONRAD, President; that it is encircled with the signatures of Governors J. A. RABY, and W. C. CANNON, and Col. J. J. VILLERE, having also the guarantee of four National Banks, through their Presidents, to pay any prize presented at their counters.

There are so many inferior and dishonest schemes on the market for the sale of which vendors receive enormous commissions, that buyers must see to it, and protect themselves by insisting on having LOUISIANA STATE LOTTERY TICKETS and none others, if they want the advertised chance for a prize.

The High Speed Family Printer

What kind of a printer would you use in your home? With kind everything required in the household from newspaper to family, wood type, and all the most practical features on the market, it should operate at a strong, durable, simple, rapid, and accurate manner. For particulars and sample work, address:
J. E. GEARHART, Clearfield, Pa.

Canadian address, Cardon & Gearhart, Dundas, Ont.

Job Printing done at this Office.
Rates reasonable. Prompt fulfillment of orders.**THE MOUNT ROYAL LOTTERY.**

Heretofore The Province of Quebec Lottery authorized by the Legislature.

Next Drawings: - - - April 5 and 19.

PRIZES VALUE, \$13,185.00. CAPITAL PRIZE, WORTH \$3,750.00.

LIST OF PRIZES

1 Prize worth	\$3,750.00	\$3,750.00
1 do	1,250.50	1,250.50
1 do	625.00	625.00
1 do	312.50	312.50
2 Prizes worth	125.00	250.00
5 do	62.50	312.50
25 do	12.50	312.50
100 do	6.25	625.00
200 do	3.75	750.00

Approximation Prizes

100 do	6.25	625.00
100 do	3.75	375.00
100 do	2.50	250.00
500 do	2.50	1,250.00
999 do	1.25	1,248.75
999 do	1.25	1,248.75

3134 Prizes worth.....\$13,185.00

TICKETS.

25 CENTS

Tickets can be obtained until five o'clock p.m., on the day before the drawing. Orders received on the day of the drawing are applied to next drawing.
Head Office, 81 St. James Street, Montreal, Canada. - S. F. LEFEVRE, Manager.**Union Mutual Life Insurance Co'y.,**

OF PORTLAND, MAINE.

ESTABLISHED 1848.

JOHN E. DeWITT, President.

Assets December 1892.....\$6,429,927.22

Surplus according to 4½ per cent. Canadian Standard..... 705,000.00

Deposit with Canadian Government for security of Canadian Policyholders 456,000.00

The Union Mutual Life Insurance Co. is the only Company whose policies are governed by the statutes of the celebrated MAINE NON-FORFEITURE LAW, which law protects policies from lapsing after they have been in force for three years. For further particulars apply to WALTER I. JOSEPH, Manager, 30 St. Francois Xavier St., Montreal.

WANTED Two or three Special Agents for Montreal and district. To men who can command business, very liberal Contracts will be offered.

DRUNKENNESS.

—ARE YOU INTERESTED IN THE CURE FOR—

DRUNKENNESS OR THE MORPHINE HABIT?Have you a Husband, Brother, Son or friend who is addicted to strong drink? If so we can cure him. For fullest information address THOS. LINDSAY, Secretary, Double Chloride of Gold Cure Co., 16 Hanover Street, Montreal.
TELEPHONE 3043.**Walter Kavanagh,** 117 St. Francois Xavier Street, Montreal

REPRESENTING:

SCOTTISH UNION and NATIONAL INSURANCE CO., of EDINBURGH, SCOTLAND
Assets, \$30,109,332.64.NORWICH UNION FIRE INSURANCE SOCIETY, OF NORWICH, ENGLAND.
Capital, \$5,000,000.EASTERN ASSURANCE CO., OF HALIFAX N.S.
Capital, \$1,000,000.

21 G

THE E. B. EDDY CO.
MAMMOTH
PAPER MILLS
HULL, P.Q.
LARGEST - IN - CANADAToilet, Tissue, Manilla, Brown Wrapping,
News, White Print, Woodboard,
Duplex Board, etc.

ASK FOR THE E. B. EDDY CO.'S PAPER

And you will get the best made.

MONTREAL BRANCH (Telephone 1619) 318 ST. JAMES Street.

CANADIAN PACIFIC RY.**Special Trains**

FOR

Colonists and their Effects

WILL LEAVE

Carleton Junction 9:00 p.m. Tuesdays

March 11, 21, 28.

April 4, 11, 18 & 25, 1893.

Provided sufficient colonists and their effects offer.

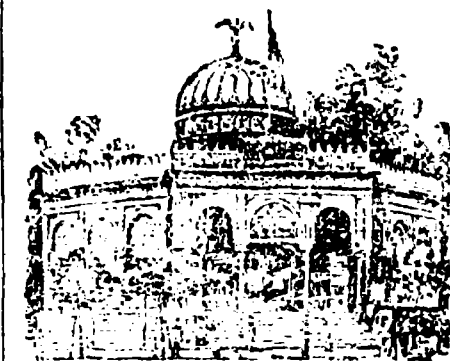
These combination trains are run for the express purpose of affording intending settlers the privilege of accompanying their stock and effects.

For intending settlers with stock, trains leave Montreal 8:00 p.m. every week day with colonist cars attached.

For further particulars read the pamphlet FREE FACTS, FARMS & SHEEPERS, which will be furnished free on application to nearest railroad ticket agent, or apply to:

MONTREAL TICKET OFFICES:

266 St. James Street and at Stations.

MEXICAN

Moresque Pavilion, City of Mexico, where drawings take place.

LOTTERY

OF THE

Beneficencia Publica

(PUBLIC CHARITY)

ESTABLISHED IN 1858 IN THE

CITY OF MEXICO.

The Only Lottery Protected by the Mexican National Government.

And is likewise connected with any other company using the same name.

THE NEXT MONTHLY DRAWING

WILL BE HELD IN THE

Moresque Pavilion in the City of Mexico

THURSDAY, MARCH 16, 1893.

THE CAPITAL PRIZE BEING

\$60,000.00

By terms of contract the company must deposit the sum of all prizes included in the scheme before selling a single ticket, and receive the following official permit. CERTIFICATE—I hereby certify that the Bank of London and Mexico has on deposit the necessary funds to guarantee the payment of all prizes drawn by the Loteria de la Beneficencia Publica.

Further, the company is required to distribute fifty-six per cent. of the value of all the tickets in Prizes—a larger portion than is given by any other lottery.

PRIZE OF TICKETS—U. S. Currency.

Wholes, \$4; Halves, \$2; Quarters, \$1.

LIST OF PRIZES:

1 Capital Prize of \$60,000	is \$60,000
1 Capital Prize of 20,000	is 20,000
1 Capital Prize of 10,000	is 10,000
5 Capital Prizes of 1,000 each	are 5,000
10 Prizes of \$500 each	are 5,000
25 Prizes of 200	are 5,000
100 Prizes of 100	are 10,000
250 Prizes of 40	are 10,000
480 Prizes of 20	are 9,600

APPROXIMATION PRIZES.

100 Prizes of \$80	approximating to \$8,000 prize, \$8,000
100 Prizes of \$40	approximating to \$4,000 prize, 4,000
100 Prizes of \$20	approximating to \$2,000 prize, 2,000
798 Terminals of \$20	decided by \$80,000 prize, 15,980
798 Terminals of \$20	decided by \$20,000 prize, 15,980
2,781 Prizes, amounting to	\$178,560

All Prizes sold in the United States fully paid in U.S. Currency. Agents wanted everywhere.

Remit by ordinary letter, containing MONEY ORDER, issued by all Express Companies, or New York Exchange.

Currency must invariably be sent Registered.

Address, U. BASSETT, CITY OF MEXICO MEXICO

BRODIE & HARVIE'S

Self-Raising Flour

as THE BEST and THE ONLY GENUINE article. Housekeepers should ask for it and see that they get it: all others are imitations.