



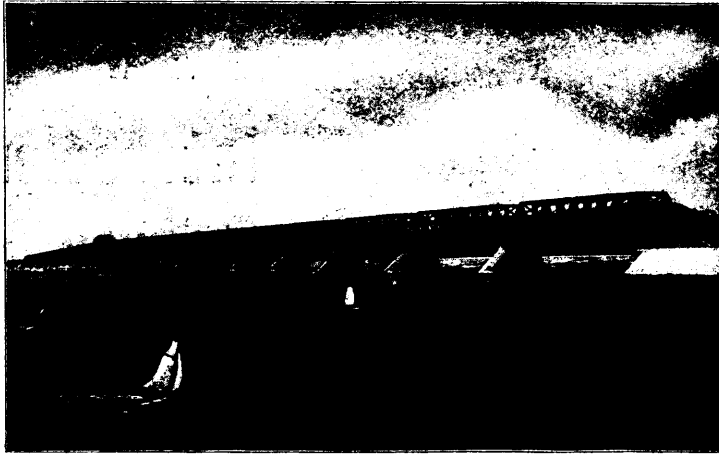
THE POPULAR **TOURIST ROUTE**  
AND LEADING  
**INTERNATIONAL COMMERCIAL HIGHWAY**

Favorite Dining and Sleeping Car Line  
between  
Eastern, Western and Canadian Cities.

The Magnificent **MUSKOKA LAKE DISTRICT**

Reached only by the

**Grand Trunk Railway System.**



Grand Trunk Railway Victoria Jubilee Bridge over  
St. Lawrence River, Montreal.

Portland, Me.,                      Quebec,                      Montreal,  
Toronto,                      Niagara Falls,                      Buffalo,  
Hamilton,                      Detroit,                      Chicago,

and all points east and west reached by fast express trains over this great  
DOUBLE TRACK System.

**Write for** copies of handsome **Tourist Literature**, including "Muskoka Folder,"  
"Across Niagara Gorge," "A Highland Holiday," "Tourist Travel," "Georgian Bay Folder,"  
"Lake of Bays Folder," "Hay Fever Pamphlet," "Photographic Catalogue."

All information, maps, etc., cheerfully furnished by any Agent of the Grand Trunk Railway  
System.

<b>CHAS. H. HAYS,</b> General Manager, MONTREAL.	<b>GEO. B. REEVE,</b> General Traffic Manager, MONTREAL.	<b>W. E. DAVIS,</b> Gen. Pass. & Ticket Agt., MONTREAL.	<b>GEO. T. BELL,</b> First Asst. Gen. Pass. & Ticket Agt., CHICAGO.	<b>GEO. W. VAUX,</b> Asst. Gen. Pass. & Ticket Agt., MONTREAL.
--	--	---	---	--