

MUNICIPAL ENGINEERS, CONTRACTORS AND MATERIALS

DOMINION SUPPLEMENTARY ESTIMATES.

The Dominion supplementary estimates, presented to the House last week, call for an expenditure of \$5,497,343.85. For works of construction the following sums are granted:

RAILWAYS.

INTERCOLONIAL RAILWAY.—Increased siding accommodation, \$90,000; increased station accommodation, \$15,000; to provide for sea wall and cribwork protection to banks on line of Cape Breton Railway, \$10,000; increased accommodation at Levis, \$80,000; elevator at St. John, \$114,000; increased accommodation at St. John, \$49,600; improvements at Mulgrave, \$15,000; new turntables and strengthening old ones, \$12,425; improvements at Point Tupper, \$8,500; water service for fire protection at Moncton, \$9,000; improving the telegraph service, \$13,000; new engine houses and to enlarge others, \$40,000; extension to deep water at North Sydney, \$9,500; rest houses at nine engine stations, \$4,300; refrigerator cars, \$30,000; track scales at Pictou, Drummondville and North Sydney, \$2,700; subway under the tracks at Christie's Crossing, Amherst, \$4,200; dredging at Pictou wharf, \$1,300; dredging at Pictou landing wharf, \$2,250; increased accommodation at Halifax, \$20,000; elevator at Halifax, \$77,000.

(Continued on page 6).

DEBENTURES BOUGHT

Municipalities saved all possible trouble by applying to

G. A. STIMSON & CO.
Investment Dealers

24 and 26 King St. W. - TORONTO

Paving Granite

Granite Sets for Street Paving. — CURBING cut to any shape ordered. — Fine Rich Colors for Building and Monumental Purposes.

Quarries, St. Philippe d'Argenteuil, P. Q.

Address all communications to

JOS. BRUNET - COTE DES NEIGES, MONTREAL

SICILIAN
ROCK ASPHALT

Rock Asphalt Powder and Rock Asphalt Mastic, for street paving.

Contractors, write us for close prices.

GEORGE W. REED & CO.

753 and 785 Craig Street, - MONTREAL

Please mention the CONTRACT RECORD when corresponding with advertisers.



THIS Preparation is used for the following purposes: Prevention of Dry Rot, Fungus, Decay and the attack of White Ant and Termites in Timber; Preservation of Beams, Sills, Flooring, Wainscoting, Shingles, Wood Carving, Sidewalks, Slat-walks, and Block Pavements. Preparation for sale or Timber treated at Factory, Corner Shaw Street and C.P.R. Track. Circulars sent of Application. Tel. 978.

THE PHOENIX BRIDGE & IRON WORKS

MANUFACTURERS OF STAY BOLTS AND ALL KINDS OF RIVETS

STEEL AND IRON STRUCTURAL AND ARCHITECTURAL WORK

Beams, Channels, Angles and
Teels always in stock.

29 to 49 McGill Street,

P.O. Box 893.

MONTREAL

Prices on Application.

W. & F. P. CURRIE & CO.

MONTREAL

Importers of

SEWER PIPES,

CHIMNEY TOPS,

VENT LININGS,

FLUE COVERS,

FIRE BRICKS,

FIRE CLAY,

WHITING.



PORTLAND CEMENTS,

HIGH GRADE ENGLISH

B. S. & Co. "ANCHOR,"

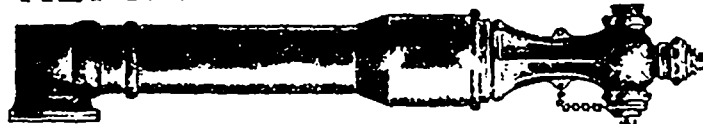
ALSO OTHER BRANDS,

PLASTER OF PARIS,

BORAX,

CHINA CLAY.

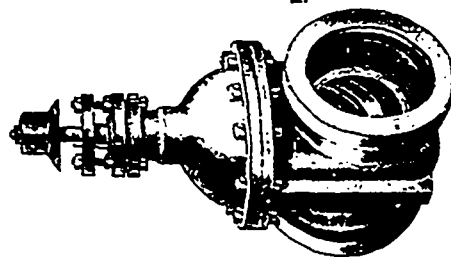
The KERR ENGINE COMPANY, Limited



Corporations and
Contractors...

should not fail to obtain our
prices on

PUMPING MACHINERY,
HYDRANTS and VALVES



WALKERVILLE, - ONTARIO

THE HAMILTON AND TORONTO SEWER PIPE CO.
(LIMITED.)

HEAD OFFICE AND FACTORY: HAMILTON, CANADA

THE STANDARD DRAIN PIPE CO.
OF ST. JOHNS, P. Q., (LIMITED)

— FOR —
SEWERS,
CULVERTS
AND
WATER PIPES.
INVERTS
For Brick Sewers

Write for Discounts

Manufacturers
Salt-Glazed
Vitrified
SEWER
PIPES

Double Strength
Railway Cul-
vert Pipes,
Inverts, Vents,

AND ALL KINDS OF FIRE CLAY GOODS