

**CHESS.**

All communications for this department should be addressed—**CHESS EDITOR,** Windsor, N. S.

The following very interesting game was won by Mr. G. B. FRASER in a match with Mr. H. N. STIRLING, of Madras, played in December, 1872. Mr. Fraser gives the odds of Pawn and two moves:—

(Remove Black's King's Bishop's Pawn)

<b>WHITE.</b> Mr. Stirling.	<b>BLACK.</b> Mr. Fraser.
1 P to K4	
2 P to Q4	P to Q3
3 P to QB4	P to K4
4 P takes P	Q to KR5

(A novelty, so far as we are aware.)

5 B to Q3	P takes P
6 Kkt to B3	Q to Kt4
7 QB to K3	Kt to QB3
8 Kt to QB3	

(White prudently develops his game before assuming offensive measures.)

8	B to Kkt5
9 Kt to Q5	Castles
10 P to KR3	

(He ought to Castle, Mr. Fraser remarks, on which would probably follow:—

10 Castles	Kt to Kt5
11 B to K2	P to QB3
12 P to QR3	Kt to R3
13 B takes RP	P takes Kt
14 BP takes P	Kt to B2
15 R to QB sq	B to Q3, &c.)

11 K to B sq  
(Some interesting and instructive situations arise from interposing the Bishop.)

11	Kkt to K2
12 B to K2	B takes Kt

(This move plunges Black into a sea of troubles.)

13 B takes B	Q to KB2
14 P to QR3	B to Q3
15 P to QB5	Kt takes Kt
16 P takes Kt	B to K2
17 Q to QR4	

(P to Q6 looks a still more forcible move, but is not so in reality.)

17	R takes QP
18 B takes R	Q takes B
19 R to Q sq	Q to KB2
20 P to QKt4	

(Here White commits the serious error of allowing Black's Queen to enter his game and occupy a commanding position, from which it is not easy to dislodge it.)

20	Q to QB5 (ch)
21 K to Kt sq	R to KB sq
22 R to QB sq	

(In the vain endeavor to get the Black Queen off this rank.)

22	Q to KR5
23 K to R2	K to Q5
24 Q takes QRP	

(Surely this is somewhat dangerous.)

24	R takes KBP
25 Q to R8 (ch)	K to Q2
26 Q takes QKtP	P to K5

(Curiously enough, although the position of the Black King is much exposed, he can receive no immediate harm by the check of Queen or Pawn)

27 KR to KB sq	
----------------	--

(On this move Mr. Fraser remarks—“B takes Kt ought to have been played, in which case, with correct play on White's part, the game is drawn, e.g.:—

27 B takes Kt	Q to KB5 (ch)
28 K to Kt sq	Q takes R (ch)
29 K takes R	B to R5 (ch)
30 P to Kkt3	

(The only move.)

30	Q to R5 (ch)
31 K to Kt2	Q to B6 (ch)
32 K to Kt sq	Q takes KtP (ch)

And the game is drawn. White, however, in playing R to KB sq, did not observe the threatened mate by the sacrifice of Queen.”]

And Black mates in three moves.

**FOUR KNIGHTS GAME.**

<b>White.</b> GUNSBERG.	<b>Black.</b> ZUKERTORT.
----------------------------	-----------------------------

1 P to K4	P to K4
2 Kt to QB3	Kt to KB3
3 Kt to B3	Kt to B3
4 P to QR3	P to QR3
5 P to Q4	P takes P
6 Kt takes P	P to Kkt3
7 B to Kkt5	P to KR3
8 B to R4	B to Kt2
9 Kt takes Kt	KtP takes Kt
10 P to K5	P to Kt4
11 P takes Kt	Q takes P
12 B to Kt3	R to QKt sq
13 Kt to R4	R takes P
14 Kt takes R	Q takes Kt
15 R to QKt sq	B to B6 (ch)
16 K to K2	Q takes RP
17 Q to B sq	Q to R4
18 K to Q sq	P to KB4
19 P to B3	K to Q sq
20 B to Q3	R to K sq
21 R to Kt3	P to B5
22 B to B2	P to B4
23 Q to R3	Q takes Q
24 R takes P	B to Kt5
25 R to R2	R to K3
26 P to R4	P to Kt5
27 P takes P	B to Kt2
28 R to Kt sq	R to Q3
29 K to B sq	P to QR4
30 B to K sq	B to Q4
31 P to B4	B to K3
32 B to K2	R to Q5
33 B takes B	BP takes B
34 R takes P	B takes BP
35 B takes B	R takes B (ch)
36 K to Kt2	R to K5
37 R to QB sq	P to Q3
38 R to R8 (ch)	K to Q2
39 R to R7	R to R7 (ch)
40 R to B2	Resigns

**DRAUGHTS-CHECKERS**

All Checker communications should be addressed to W. Forsyth, 36 Grafton Street, Halifax.

The proprietors of THE CRITIC offer two prizes—to consist of books on Checkers—to those subscribers who shall send in the greatest number of correct solutions during the current year. No entrance fee required.

**SOLUTIONS.**

**PROBLEM 47**—Position—Black men 3 and 4; white man 13, kg. 27; black to play and draw.

3—7	13	9	14—18	2	7
27	23(a)	10—14	9	6(2)	26
7—10(1)	18	15	18—22		
23	18	8—12	6	2	
4—8	15	19	22	26	

(a.) If 8—11 white wins.

\*One of our correspondents stops at this point, calling it a draw, but the following play shows that white can win:—

19	23	16—20	23	27	31—26
12—16	11	15	24—28	15	18
7	11	20—24	27	32	white wins

(1).—Instead of 18 15, move 18 22, and the following play results:—

18	22	22	26	7	11	19	23
8—11	15—19	23—27	28—32				
9	6	2	7	11	16	31	26
11—15	18—23	27—32	32—28				
6	2	26	31	16	19	26	22
14—18	19—24	32—28	28—32				

(2).—Instead of 26—31, if you play 26—30, the following will result:—

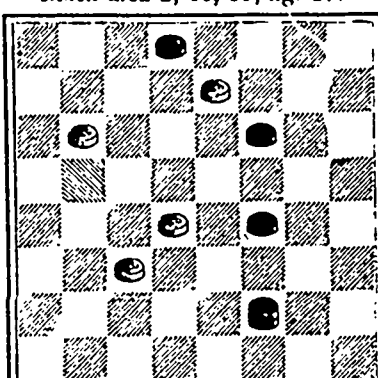
26—30	11	15	22—17	23	27
7	11	26—22	15	18	16—20
30—26	19	23	12—16	drawn.	

**PROBLEM 48**.—Solved by Mrs. E. Moseley. Position—Black men on 1, 6, kg 21; white men 14, 25, 30, kg. 16. Black to play and white to win. (1)21—17 6—15(2)15—19 17—26 14 10 16 11 25 22 30 16 white wins.

**VAR. I.**  
1—5 14 10 5—9 23, 26 25 22 9—13 19 23 white wins 6—9 16 19 9—14

**VAR II.**  
17—22, 25 18, 15—22, 11 15, and white wins.

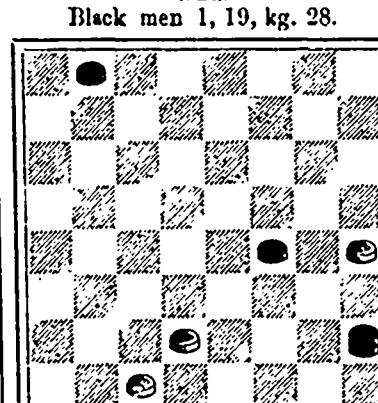
**PROBLEM 51.**  
Selected.  
Black men 2, 11, 19, kg. 27.



White men 7, 9, 18, 22.  
Black to play and win.

Will any of our exchanges kindly inform us of the authorship of this very neat problem, and where it was first published?

**PROBLEM 52.**  
By A. Andrews, Auckland, New Zealand.  
Black men 1, 19, kg. 28.



White men 20, 26, 30.  
Black to play and win.

**J. A. LEAMAN & CO.**  
SUCCESSORS TO  
**FADER BROS.**  
Wholesale and Retail Dealers in  
**Meats of all descriptions, Poultry, Vegetables, Butter, Eggs, &c.**  
—ALSO—  
Manufacturers of Canned Goods, Bolognas, &c.  
Highest market prices allowed on consignments of first-class Country Produce.  
Hotel Keepers and others in places with no available markets, will find it to their advantage to patronize us, as we keep a large stock constantly on hand, and have every facility for executing orders.

**Great Clearing SALE**  
—OF—  
**Summer Clothing**  
—FOR—  
**ONE MONTH**  
—AT—  
**The GLOBE,**  
18 Buckingham St.,  
BETWEEN ARGYLE & BARRINGTON STREETS  
The Largest  
And Cheapest  
**RETAIL**  
**Clothing House**  
**J. W. SALTERIO**  
Printed by Halifax Printing Co. 161 Hollis Street, Halifax, N. S.