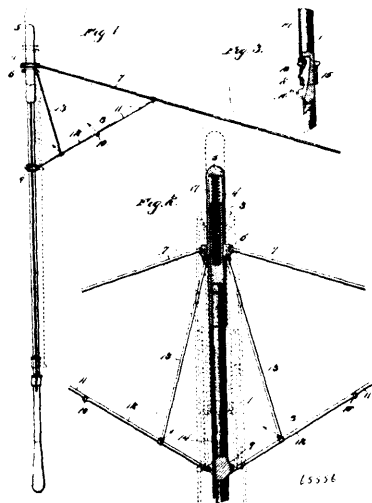
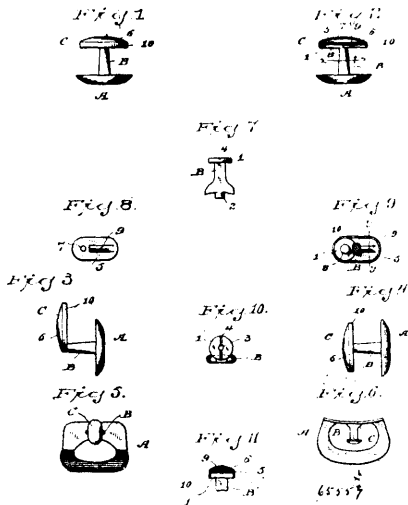


upwardly and respectively connected to the stick and the ribs, braces movably attached to the inner portions of the stretchers and



also to the sleeve, and means for holding the sleeve drawn inwardly against the repellant action of the spring.

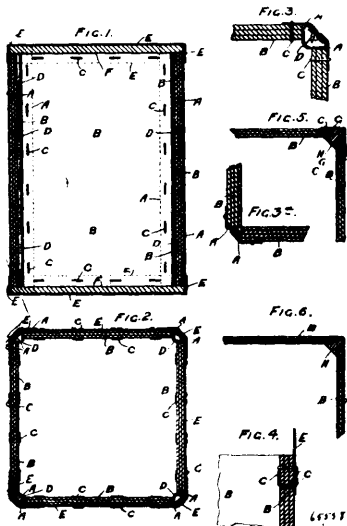
No. 65,557. Collar Button. (*Bouton de cols.*)



Willis R. Austin and William N. Craw, both of South Norwalk, Connecticut, U.S.A., 28th December, 1899; 6 years. (Filed 9th December, 1899.)

*Claim.*—1st. A collar button comprising a base plate, a shank rigidly secured thereto and provided with a disc lying in a plane at right angles to the axis of the shank and wholly at one side of the shank, and a head pivoted directly to the upper face of said disc and bodily rotatable relatively thereto, said head having a flange fitting closely around the disc and shielding the same, substantially as described. 2nd. A collar button comprising a base plate, a shank rigidly secured thereto and provided with a disc lying in a plane at right angles to the axis of the shank and wholly at one side of the shank, said disc having a groove across its face, and a head pivoted directly to said disc and eccentrically to the shank and having a spring which is adapted to engage the groove so as to retain the head at either the receiving or holding position, said head having a flange fitting closely around the disc and shielding the same, said flange being rotatable relatively to the disc. 3rd. A collar button comprising an enlarged thin base having an upright portion and a lower portion at an angle thereto, a shank rigidly secured to the upright portion of the base and provided with a disc lying in a plane at right angles to the axis of the shank and wholly at one side of the shank, and a head pivoted directly to the upper face of said disc and bodily rotatable relatively thereto, substantially as described.

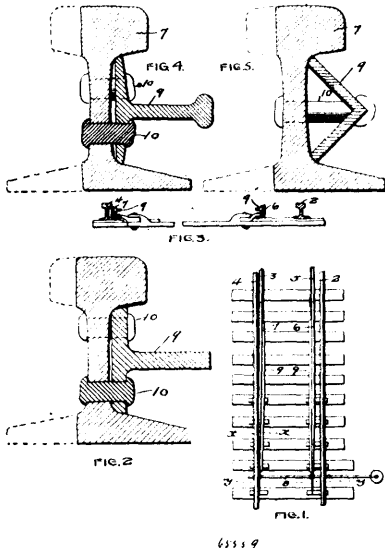
No. 65,558. Box Manufacture. (*Fabrication de boîtes.*)



Peter Stuart Brown, Bothwell Park, Bothwell Lanark, Scotland, 28th December, 1899; 6 years. (Filed 9th December, 1899.)

*Claim.*—1st. A chest or box whose sides or ends are made of built-up veneer boards, to which are attached by wire sewing or stapling sheet metal strips or straps extending beyond the ends of the boards and so doubled or bent to U-shape as to be adapted to engage with each other or to be bound together by means of open joint tubes or slips entered endwise. 2nd. For use in the manufacture of chests or boxes boards of built up veneer having attached near their edges by wire sewing or stapling sheet metal strips or straps extending beyond said edges and doubled or bent to U-shape. 3rd. A chest or box whose sides are composed of boards secured to each other by flexible strips, and retained in box form by grooved bars slipped endwise into spaces between the ends of the side boards and the flexible strips, said grooved bars being removable in order to permit of the box being collapsed. 4th. A veneer or wooden board having a deposit or protective coating of metal or metallic alloy applied thereto by smearing the same with sago flour or other paste in admixture with the metal in an amorphous state and subsequently calendaring or burnishing the surface so smeared.

No. 65,559. Switch Point. (*Pointe d'aiguille de chemin de fer.*)



Horward G. Kelley, Minneapolis, Minnesota, U.S.A., 28th December, 1899; 6 years. (Filed 9th December, 1899.)

*Claim.*—1st. The combination, with a movable switch rail, of a laterally extending inflexible reinforcement thereon. 2nd. The combination, with the movable switch rail, of a laterally extending inflexible reinforcement extending beyond the gauge of the side rail head. 3rd. The combination, with the movable switch rail, of a bar secured to the gauge side of the rail, and having a part extending laterally therefrom, for the purpose specified. 4th. The combination, with the movable