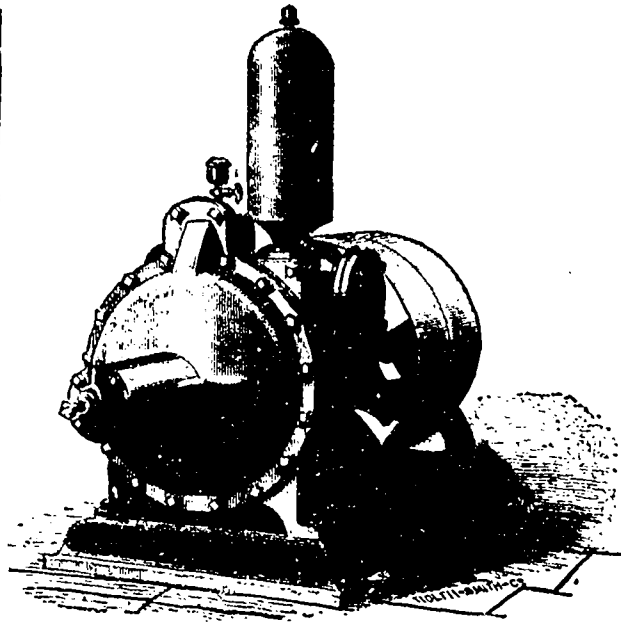


Central Iron Works

SIMCOE STREET,

PETERBOROUGH, Ontario.

WM. H. LAW, PROP'R.



PROTECTION FROM FIRE

An Improved Rotary Piston Force Pump.

No.	Diameter of Pipes.		No. of Revolutions.	Capacity per minute at table speed.	Price.
	Suction.	Discharge.			
2	2½ in.	2 inch.	250	125	\$100
3	4 "	3 "	250	250	150
4	5 "	4 "	250	400	225

SEND FOR CIRCULAR.

MANUFACTURER OF

Engines, Boilers, Pumps, Saw Mill Machinery

STEAMBOAT PROPELLERS AND ENGINES.

CASTINGS

For Architectural Works. &c.

IRON ROOFING AND BRIDGES,

AND ENGINEERING WORK IN GENERAL.

JUST PUBLISHED.

STANDARD CUSTOMS TARIFF

REVISED TO DATE.

Also contains List of Ports, Banks, Postal Rates, Interest Tables, Parcel Rates to England, Money Tables, &c., to be had from the Principal Booksellers and from the Publishers,

RAE & WATSON, 22 Church Street, TORONTO.

1y PRICE 35 CENTS. WITH BULLETIN 50 CENTS. 121

EAGLE FOUNDRY!

GEORGE BRUSH

14 to 34 King and Queen Sts, MONTREAL,

MAKER OF

Steam Engines, Steam Boilers, Hoisting Engines, Steam Pumps,

CIRCULAR SAW MILLS, BARK MILLS, SHINGLE MILLS,

Water Wheels, Mill Gearing, Shafting, Hangers and Pullies,

Hand and Power Hoists for Warehouses &c., &c.

Also, Sole Manufacturer of BLAKE'S CHALLENGE STONE BREAKER.

AND AGENT FOR

121

"Water's" Perfect Steam Engine Governor, and "Heald & Sisco's" Centrifugal Pumps

**Burdock
BLOOD
BITTERS**

Cures Dizziness, Loss of Appetite, Indigestion, Biliousness, Dyspepsia, Jaundice, Affections of the Liver and Kidneys, Pimples, Blotches, Boils, Humors, Salt Rheum, Scrofula, Erysipelas, and all diseases arising from Impure Blood, Deranged Stomach, or irregular action of the Bowels.

H. WILLIAMS,

SLATE & GRAVEL ROOFER

MANUFACTURER OF AND DEALER IN

Tarred Felt, Roofing Pitch, Sheathing and Building Papers, Carpet and Rosined Waterproof Paper, Ready Roofing, &c. All orders promptly attended to at LOW PRICES.

H. WILLIAMS,
4 Adelaide Street East, Toronto

THE

STEAM.

Hancock Inspirator

The Best Feeder known for Stationary, Marine or Locomotive Boilers.

THE INJECTOR PERFECTED!

All Sizes lift water 25 feet. No adjustment required for varying Steam Pressures.

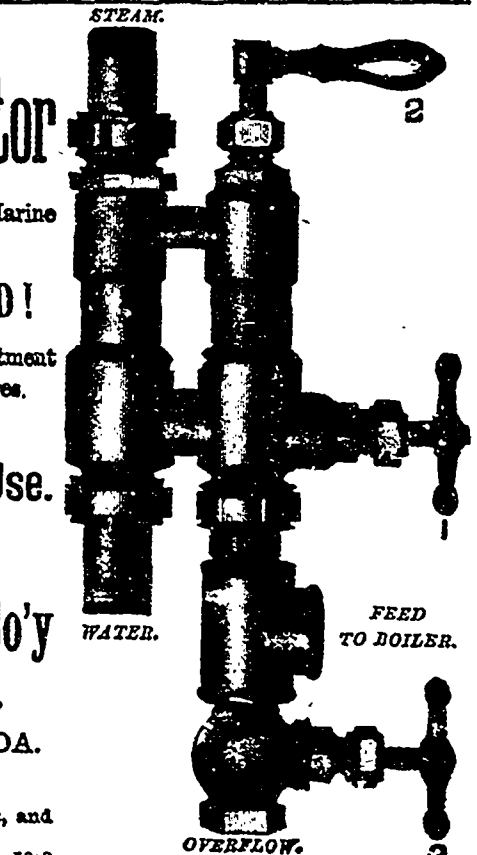
Over 50,000 Now in Use.

MANUFACTURED BY THE

Hancock Inspirator Co'y

5 CUSTOM HOUSE SQUARE,
MONTREAL, P.Q., CANADA.

Manufacturers of Inspirators, Ejectors, and General Jet Apparatus.



WATER.

FEED TO BOILER.

OVERFLOW.

1218