

THE HOME BANK OF CANADA

ORIGINAL CHARTER 1854

BRANCHES AND CONNECTIONS THROUGHOUT CANADA
JAMES MASON, General Manager

General Banking Business transacted.
Full compound interest at highest bank rate paid on savings accounts of one dollar and over.
Sales notes discounted and collected. Blank sales notes supplied free on application.

Winnipeg Office: **426 MAIN STREET** W. A. Macchaffie Manager

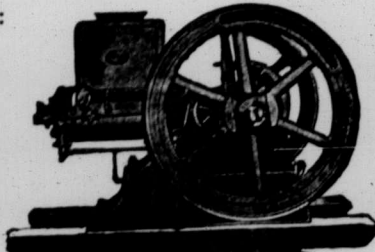
THE JUDSON WAY "FACTORY TO FARM" SAVES YOU MONEY

YOU SHOULD KNOW ALL ABOUT THE GASOLINE ENGINE THAT WON THE CONTEST AT WINNIPEG FAIR, JULY 1914

A Two Cent Stamp or a Postal Card is all it will cost you, and you cannot afford to place your order for an Engine, Grain Grinding, or Sawing Outfit until you have read our Catalog

THE JUDSON LINE:

- Gasoline Engines
- Grain Crushers
- Sawing Outfits
- Cream Separators
- Pumps, Fencing
- Hardware, Harness
- Washing Machines
- Stoves
- Sewing Machines
- Grain Elevators

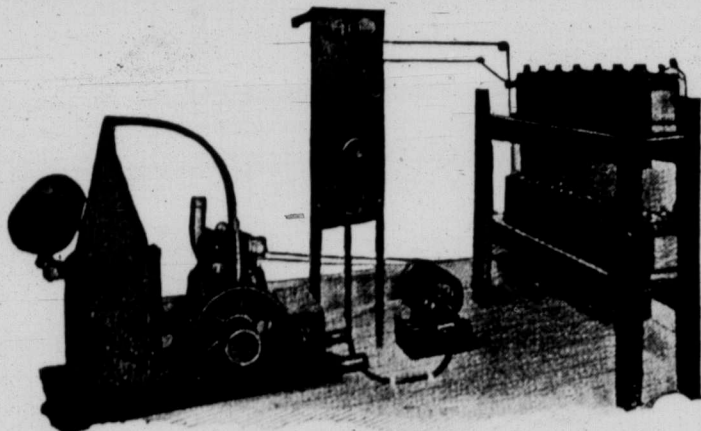


MORE POWER PER GALLON OF FUEL
SIMPLE and DURABLE
At the Lowest Prices ever Quoted for a High Grade, Dependable Engine
MAKE FARM LIFE A PLEASURE

OUR NEW BIG FREE CATALOG will help you solve your labor problems and show how to save money on high grade farm supplies. Sent free on request. Write to-day

C. S. JUDSON CO. LIMITED WINNIPEG, CANADA

Cushman Storage Battery Electric Light Plants



Engine shown in illustration is our 4 H.P. size, throttle governed and equipped with Schebler carburetor, ensuring steady quiet operation of engine. Same engine can be used for grinding, sawing, etc., or on any grain binder for which we can supply full attachments.

Cushman Motor Works of Canada Ltd.
Builders of Light Weight, High Grade Gasoline Engines for all farm power work
284 PRINCESS STREET WINNIPEG, MAN.

EXCLUSIVE SELLING AGENTS FOR:—Fanning Mills, Smut and Pickling Machines, Vacuum Washing Machines, Lincoln Grinders, Lincoln Saws, Incubators, Universal Hoists, Automatic Cream Separators, Champion Cream Separators, Portable Grain Elevators, Wagner Hardware Specialties, Mountaineer and Little Giant Neck Yoke Centers.

LUMBER

Do you know LUMBER is now selling at unheard-of low prices, which will not last very long?

NOW is the time to build a HOUSE or BARN at half-price

This is the opportunity for the man with ready money. Do not delay. Write at once for quotations. Shipment made direct from our own mills. We pay the freight.

THE RIVERSIDE LUMBER CO., LTD.,
P.O. Drawer No. 461. CALGARY, ALBERTA

Advertisers in The Guide

are in position to give good service to you and your family. The Guide will not knowingly carry the advertising of any unreliable concern. In writing to the advertiser, be sure to mention that you saw his announcement in The Guide, Winnipeg. It will insure good service.

.. To the .. Women's Associations

A good number of the men's organizations have taken a hold of The Guide's Library Competition and are making it a success, but we have heard from only a couple of the women's societies. We make a special appeal to the women to start this competition in their locality and co-operate with the men in securing a library for their association. We have decided to extend the time limit from August 31st to September 30th, and we have also decided to make a slight change in our system of reckoning the amount due on a library. From now on one-third of all subscription money collected by any local will go towards a library. That is, if you collected \$15.00 in subscriptions you would be credited with \$5.00 on a library. We think this will be an easier way of figuring, and it gives you a better return for your work.

EASY TO GET SUBSCRIPTIONS

There are a large number of people in your locality who are already taking The Guide. These subscriptions are constantly expiring and people will be glad to let you send in their renewals for them. We will send you our list of subscribers at any post office so that you can tell exactly who to call upon to collect renewals and you will also be able to locate those who are not subscribers and endeavor to get their subscriptions. You will be surprised how easily the subscriptions will come after you make a start. Get a few of your most active members together and divide your territory among them. Have two members go around together and turn in the subscriptions and money collected to the one who is acting as treasurer of the competition, who will send it to The Guide office.

SUBSCRIPTION PRICES OF THE GUIDE

Term	Price
3 months (new subscribers only)	\$0.25
5 months (new subscribers only)	.50
9 months (new subscribers only)	1.00
1 year (new or renewal)	1.50
2 years (new or renewal)	3.00
4 years (new or renewal)	5.00

One third of the money collected for subscriptions will be credited towards a library.

Start today by getting some of your members together and have your treasurer write The Guide for full particulars and instructions.

Address all correspondence to

Subscription Dept.

The Grain Growers' Guide Winnipeg, Man.

Suggested Library for Women, worth \$15.00

