

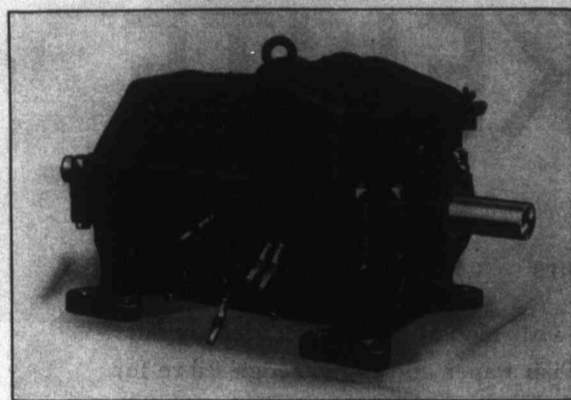
## Prepared to Supply all Requirements of the Electrical Industry



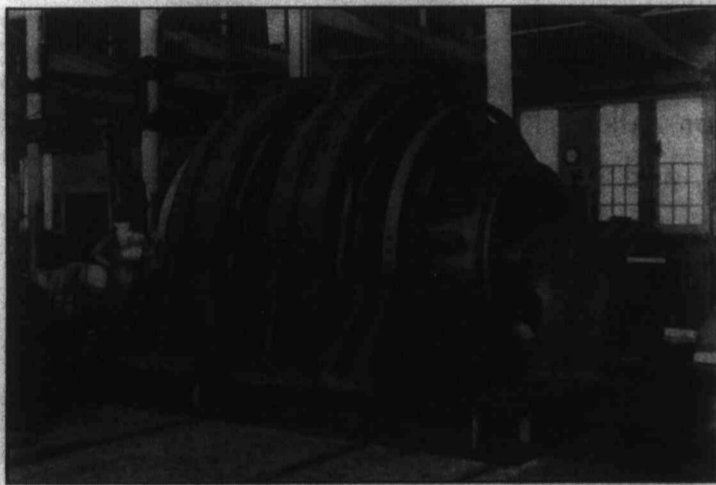
Commonwealth Electric Corporation Limited was organized eight months ago. Since then its plant has been completely equipped and modern standard designs of apparatus developed and supplied to many of the most important users in Canada.

Illustrations are shown which demonstrate this Corporation's ability to manufacture modern designs rapidly. On the following page are a few examples of equipment which has been developed and fabricated at Welland in the short space of time this Company has been in operation.

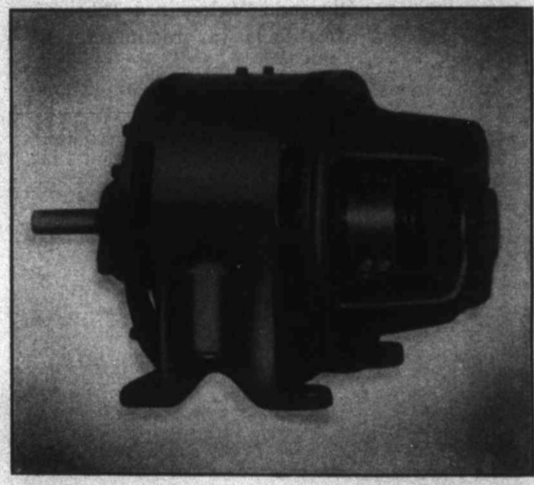
With a complete range of improved designs, dies and patterns, Commonwealth Electric Corporation Limited has now the newest and most modern plant of its kind in Canada, capable of turning out at short notice Electric Motors, Generators, Transformers and Switchgear required by Canadian users of electrical equipment.



D.C. Mill Type Motor.



8 Unit, 4,000 K.W., 250 Volt, 260 R.P.M., Compound Wound Direct Current Generator for Geared Turbine Drive.



Ball Bearing, Interpole Type, Direct Current Motor.

Included in this organization are men who have been responsible during the past decade for the production of much of the important electrical equipment in this country for a variety of purposes including Power Plants, Mines, Mills, Transmission and Distribution Systems and Municipal and Industrial enterprises throughout the Dominion of Canada.

We are now ready to quote prices and undertake production of practically any electrical engineering apparatus in demand today, with facilities to create and develop new designs as may be called for by special requirements.

Your enquiries will receive prompt and careful attention.

# COMMONWEALTH ELECTRIC MANUFACTURERS AND ELECTRICAL

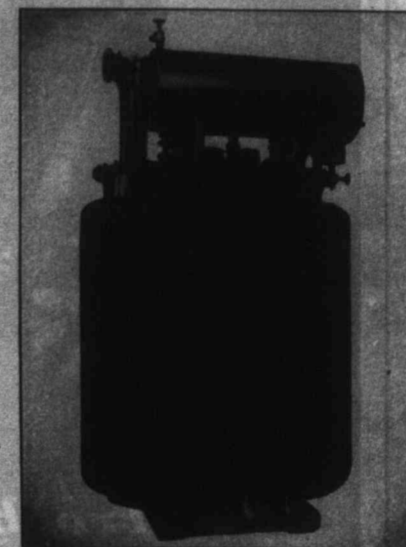
Electrical News and Engineering—April 15, 1935

131587

## Equipment Illustrated Shows Eight Months of Progress in Modern Canadian 1935 Designs



O.I.S.C. Single Phase, 25 Cycle, 50 Kv-a., 2,500-115/220 Volt, Distribution Transformer.



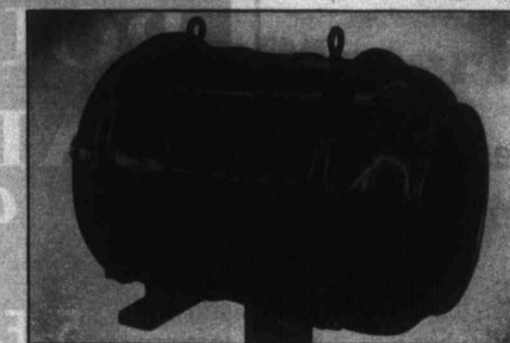
O.I.S.C. Single Phase, 25 Cycle, 500 Kv-a., 12,500/26,400-2,500 Volt Power Transformer.



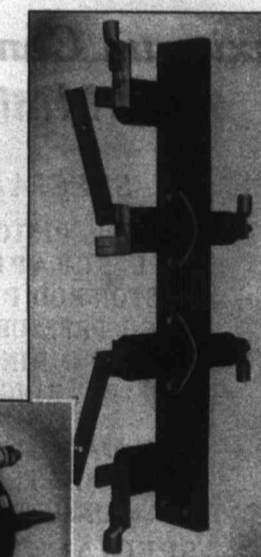
Single Phase, 25 Cycle, 3-Kv-a., 2,300-220/115 Volt Distribution Transformer.



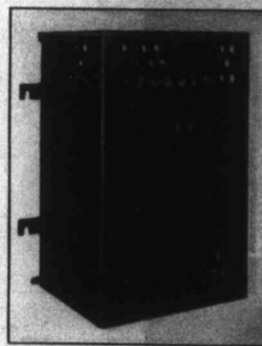
15 H.P., 1,500 R.P.M., 25 Cycle, 3 Phase, 550 Volt, N.E.M.A. Standard S.C. Motor.



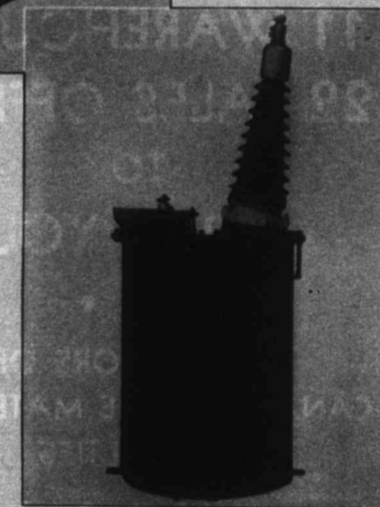
15 H.P., 900 R.P.M., 60 Cycle, 3 Phase, 220/440 Volt, Totally-Enclosed, Fan-Cooled N.E.M.A. Standard S.C. Motor.



400 Amp., 15,000 Volt Selector Switch.



Single Phase, 15 Kv-a., 575-115/220 Volt, Air-Cooled Transformer.



O.I.S.C., Single Phase, 60 Cycle, 500 V.A., 25,000-110 Volt Potential Transformer.



50 Kv-a., 5,000 Volt, 25/50-5 Amp. Dry Type Double Ratio Current Transformer.



# CORPORATION LIMITED

## ENGINEERS — WELLAND, ONTARIO

Sole Canadian Licensee of Crocker-Wheeler Electric Manufacturing Company, Ampere, N.J.

Electrical News and Engineering—April 15, 1935

MEIGHEN PAPERS, Series 5 (M.G. 26, I, Volume 206)

PUBLIC ARCHIVES  
ARCHIVES PUBLIQUES  
CANADA