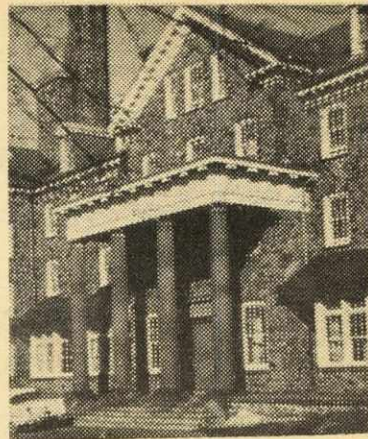


# SHIRREFF HALL

## THE INSIDE STORY OF LIFE IN A GIRLS' RESIDENCE AS REVEALED BY THE INMATES THEMSELVES



### LEAVES

"The leaves are lousy" complains one co-ed, chorused by the majority of freshettes and sophomores interviewed by the Gazette.

Freshettes have off five 11:00 p.m. a week, one of which may be extended to a midnight leave usually taken Saturday night and four 1:30 a.m. leaves a month. Many freshettes want the 11:00 p.m. curfew extended to 11:30 in order that they might see the conclusion of a movie, or go out for coffee after studying in the library.

Sophomores are more privileged. They are released each night until 11:30. 12:30 on Saturday, and may take five 1:30 a.m.'s per month.

Men are advised to date the junior and senior girls. These Cinderellas are allowed out until midnight each night and, upon request, until 1:30. However the "unfair" Saturday night leaves still prevail. Juniors must be in by 12:45 a.m., and seniors by 1.00 a.m.

The chorus would prefer their 1:30 a.m. leaves on Saturday night when fraternity parties are usually held.

Every inmate receives seven 2:30 a.m. leaves a year which are usually reserved for the gala balls.

There is, however, hope for the seemingly hopeless. Shirreff Hall is unique in that it is self-governing. The girls elect an executive which works hard to get better leaves and to amend old constitutional rules. As a result, the seniors no longer have to request permission for 1:30 leaves. This executive also punishes violators of the honor system and those girls who are late on leaves. Through the House Committee, the girls may be certain that any grievances which they harbour will be presented to the Dean for consideration. This, in fact, is the main function of the House Committee, to act as a mediator between the Dean and the residents.

### NEW WING

Shirreff Hall, completed in 1923, was made possible due to a large donation by Mrs. L.B. Eddy. There are plaques to her memory in the Hall by the steps leading into the dining room.

The new wing has brought many changes to the Hall. One of the main revisions is in the cafeteria-style meals. Formerly, the meals had been served in a formal style with the girls sitting at tables and being served by the maids. The girls were free to come in for lunch between one and one-thirty. In the evening, the meal was more formal. All the girls waited for the Dean of Women to enter the dining room. The meal started at 6:00 p.m. and anyone who entered late had to be excused. All of the girls prefer the cafeteria noon meal to the formal meal as it enables those who have early afternoon classes to eat more quickly. However, almost all of the residents would like to see the formal evening meals return. Comments range from "It's like camping out" to "I want it the way it used to be."

The main complaint is that the cafeteria supper does not enable new residents to meet the older girls. With the old system, there were seating plans which sat the girls at different tables each week. This helped make the freshettes feel more at ease with the upperclasswomen.

Complaints about food revolve around meals being "too starchy" or "too fattening." The general agreement is that it's "pretty good for institution food." Many girls who have come from other universities think that Shirreff Hall food is superior to that in other residences.

In an interview with Miss Irvine, plans for the future of Shirreff Hall were discussed. Since the new addition will double the present number of residents it is impossible to leave facilities in their present form.

Plans have been made to enlarge the reception room by making it into an L shape. There will be a door between the old and new rooms making it possible to conduct meetings and



A Midnight Snack — Julie Grouchy, Maxine Pearne, Janet Fearn, Caroline Myers, Karen Sample, Sheila Lipton, Jennifer Austin.

tal club. Each month, a new picture, for a fee, of course, hangs over their mantle.

Adjoining the living room is a kitchen, where a small hot-plate and fridge make possible the preparation of quick lunches for themselves or home-cooked meals for their friends.

The girls come from such widely separated places as British Columbia, Alberta, the Maritimes, and Japan. Ten live in each house. Their studies include: Law, Medicine, Bacteriology, Education, English, Psychology, and Nursing. The graduate students are regarded as mature enough not to warrant a house mother. The students are independent

and have complete freedom. There are no leaves, which characterize the activities of the undergraduate. Each House has a student Business Manager who looks after the money contributed by the girls for such necessities as S.O.S. pads for the kitchen.

All of the girls spoke enthusiastically of this independent system and of their freedom. Some pointed out the mature and serious prevailing tone of the graduate residence as compared to an undergraduate residence. Others said they enjoyed meeting a variety of individuals, each possessing a definite interest in a certain study. It was like a "meeting of the minds". They live together, not as a large group, but little as a family, with very little conflict and much congeniality.

When conflicts do occur, they seemingly solve themselves.

SHIRREFF HALL, THE DALHOUSIE WOMEN'S RESIDENCE, IS UNDERGOING MANY CHANGES. SOME OF THESE CHANGES ARE RATHER PLEASANT, SOME ARE NOT. WHAT ARE THEY AND HOW WILL THEY AFFECT THE RESIDENTS?

## A NOSTALGIC LOOK AT THE DISAPPEARING LIFE OF SHIRREFF HALL

One looks back with nostalgia at the days of the chiming old crank bell. This bell was in existence from the days of the Hall's opening until the fall of 1962. Its function was to notify a particular floor, each floor having a certain number of rings, that a girl on that floor was either "called for" or "wanted on the phone." The girl cranking the bell would then exert her vocal chords to the tiny figure on the third floor that "Mary Jane mumble mumble..." Many was the girl that left phone duty with a hoarse throat. Now the phone is obsolete. In its place on the ground floor is a direct line to the Garden Taxi, of all things, and instead of waiting for the tinkle of a bell, one is startled by a new sound issuing from a little box on the wall. Ah, this age of electronics! What happens now if the lines are down? The formal suppers at 6:00 are gone. Meals are gobbled

and the mass production of the cafeteria has won. Dark brown trays now appear on the white linen table cloths.

At the thought of the loss of Sunday afternoon tea, the girls rebelled. They voted it in, and hopes of the continuance of this tradition are still high. Dainty sandwiches and cookies with hot tea are served before a blazing fire in the reception room. On a cold winter day, this hour of luxury and frivolity is much appreciated.

The question now lies in everyone's heart — what will happen with one hundred and fifteen more girls? Can we visualize that? It seems fantastic. A whole new life and atmosphere will arise. The students and residents of this year must try to look ahead. They are the ones who will mould that life to begin next year. They will be the only ones who will remember what Hall life was like.

Will there be a House Committee? If there is, how will they manage? House Committee today is the voice of the students. Each class is represented and as far as the committee is able, suggestions of each class are acted upon. It is the liaison between the students and the Dean. The Dean is their advisor but they are free to make their own decisions, within limits. They also act as a disciplinary body. How will they find enough phone duties for the additional number? All these questions this year's House Committee must think about. They are the executive of the Shirreff Hall Self Governing Association and changes in its constitution are necessary. What will they do?

We must await the outcome of these changes. Even Shirreff Hall, that firm and stable body at the foot of the Garden Path (even it has gone), forges ahead.

allowing for private entertainment at the same time. There will be a kitchenette off the new room, but it is not known whether it will be in use for every nite entertainment or just for meetings.

In the basement of the new wing the architect has made plans for a game room, a canteen and a larger laundry room, with four badly needed washers and dryers.

The dining room which is now enlarged to twice its seating capacity will also undergo changes. The round tables will be replaced with long ones. The inmates feel that long tables are "too informal", but Miss Irvine feels that the long tables are more modern in appearance besides being necessary to seat the girls and their cafeteria trays.

The french doors on the right wall will open out onto a patio. This will be a welcome addition for those attending summer school. The general comment is, "What good will it do us in winter? There is always the spring sunshine to be taken advantage of. There will be no need to sun on the roof."

The main objection to the rooms in the addition is that there will be only 22 single rooms. Senior girls who live in the Hall this year will get first choice to those single rooms which are in great demand. The new part will accommodate 120 girls.

### MAIDS

Many comments have been made about the lack of maids in the Hall. The general feeling is that while residence fees have gone up, maid services had decreased. Rooms are not cleaned daily, and "dirty floors are not too pleasant". "Our floors seem to be dirty all the time" is the general grumble. The maids are aware of the restlessness, but claim that the residence is understaffed, and that it is difficult to clean the floors and be in the dining room within the short time allotted to them.

There are some girls who would rather board out but the



A birthday party

majority like residence life. They feel that the companionship and proximity to the campus make up for the discomforts of the rules and regulations. With regard to the impositions caused by the new wing,—"Things must be bad before they get better".

### GRADUATE HOUSE

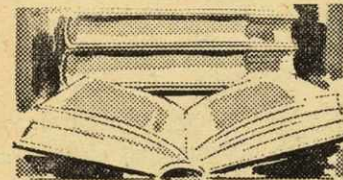
This year, a second Graduate House has been added to the House on University Avenue. It is located at 6300 South St.

The stony walls of Shirreff Hall are by no means the only facilities provided by the university for female students.

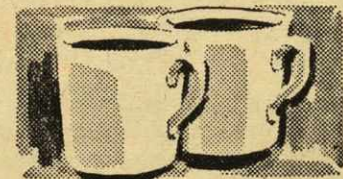
The Graduate Houses are quite different from usual residences of any university. A visitor may be received in a tiny living room, common to both houses. A sofa, chairs, lamps, a carpet, and perhaps a fire in the fire-place, added to the genial company of your hostess, create a home-like atmosphere. In fact, the girls of Graduate House, 3600 South St. are still pondering the domestic problem of an appropriate mantle decoration. The girls of 194 University Ave. have solved this problem by joining a picture ren-



Typical co-ed's room



BOOK-TIME



BREAK-TIME



DATE-TIME



FILTER *Player's*  
...the best-tasting filter cigarette