



# FASHIONS

for class and campus



Levine's have their C.O.D. (College Outfitters Degree) so they are experts when it comes to the needs of young people. For Men's Wear with a campus flair . . . visit Levine's Men's Department on the main floor — Ladies go up stairs to the fashion and sportswear shops for the newest in back to college fashions.

To mention a few brand names found in our Men's Department

- JANTZEN
- CRAFT
- CROYDON
- TONY DAY
- MURRAY RANDOLPH

## MEN'S SHOES

The latest in Fashion—• Oxfords • Straps • Slip Ons • Boots with brand names such as Hewitson, Ritchie, Gale, Jarman, and Greb.

In Casuals — the Hush Puppies — Play-boy Casuals for Campus Wear. Sizes 6 to 12 — PRICED FROM

**\$6.95 to \$21.95**

## U.N.B.

### LEATHER JACKETS

- Horsehide Colt Leather Jackets by Craft
- Waist Length
- Lay Down Collars
- Plain Cuffs
- Regular and Tall Models
- Sizes 36 to 46

**\$34.50**

### ALSO TEACHER'S COLLEGE LEATHER JACKETS

In Levine's large Men's Dept. on the Main Floor, you will find all the leading brand names such as Jantzen, Tony Day, Croydon Topcoats, Craft Sportswear, Utex, Murray Randolph, Shipley Suits, MacGregor Overcoats, Rothstein, Chester Reed, Stanfields and many more . . . Drop in and leisurely browse around and get acquainted with Mr. Thompson who will gladly assist you with your selection.

## U.N.B. LAMBS LAINE

### WOOL JACKETS

By CRAFT

- 100% All Wool
- Waist Length
- Completely Insulated
- Sizes 36 to 46

**\$21.95**

## LADIES BACK TO COLLEGE SHOP —

### FROM THE SWEATER BAR

Famous Brand Names as Glenhill — Dalkeith — Golden Crown. Use famous Glenhill Sweaters, mix or match with this season's new Fall styles . . . 100% botany wool sweaters in Glenhills — Four leading classic Styles.

L. S. Pullover **\$9.98** Classic Cardigans **\$10.98**

Novelty Collar — ¾ Sleeve Pullover **\$10.98**

Classic Cardigan with Collar — **\$11.98**

Sizes 34 to 42

### POPULAR JUMPERS

In all College wardrobes there must be a Jumper — Why? They can make so many costumes wear with contrasting or matching sweaters — over the season's newest fashions in skirts or dress them up with a fancy blouse. Large selection in plain wools - tweeds - plaids - corduroys. Sizes 8 to 20.

PRICED FROM **\$10.98 to \$19.98**

A great new world  
of Shopping Pleasure  
in Levine's 30 Depts.

## 2ND FLOOR

### SKIRTS

Swinging, swaying, fluttering, flaring — the new season skirts move via box pleats, knife pleats, A-line and gathers! And here they are at Levine's Sportswear Dept., 2nd Floor — in fabrics as lively as their styles! Houndstooth checks, bold block and white herringbones, plaids or plains.

Just a few of the skirts a whirl in our Sportswear Department where the Levine flair for fashion is in high gear — Come, see them all. Famous brand names as Highland Queen, Sabre, Shamrock. Sizes 8 to 20.

PRICED  
**\$12.98**  
TO  
**\$19.98**

For Campus Capers . . . Relax in Comfortable, Fine Worsted

### WOOL SLIMS

Choose from plains and plaids — Famous brand names will be found in these slims as Pantino, Sabre, Highland Queen. Sizes 8 to 20.

PRICED FROM **\$10.98 to \$16.98**

While in our Ladies' College Shop see the large selection of

### BLOUSES

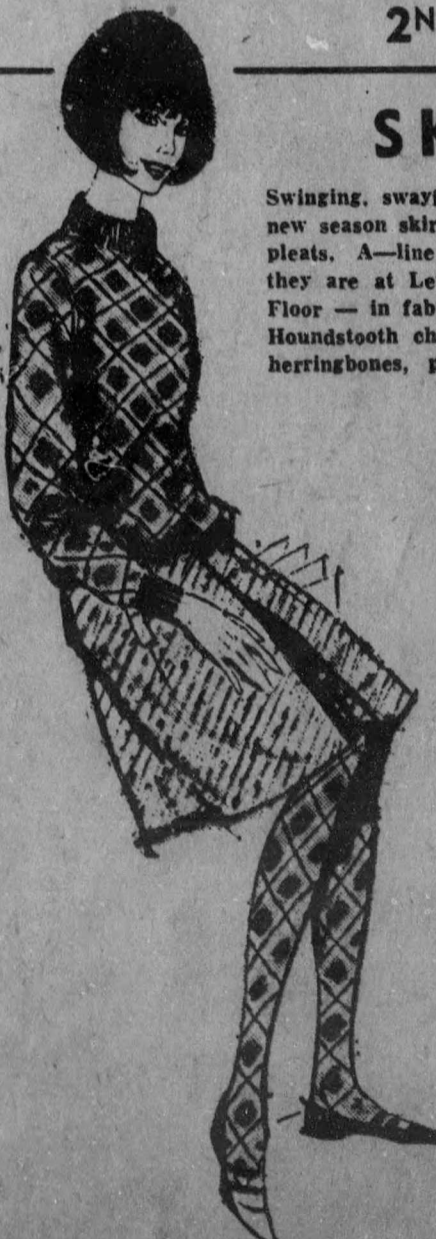
PRICED FROM **\$2.98 to \$6.98**

### LADIES' SHOES

Levine's Street Level Shoe Department . . . has an exceptionally large variety of

young peoples' shoes to choose from in Fall's newest styles for casual and dress wear.

Priced From **\$4.95 to \$10.95** A Pair



Tickets are  
ready Beaver  
at 8:00 p. m.,  
early.  
Ian and S  
They are a C  
coffeehouses.  
are one of th  
Canada. Ticke  
Tosh Pass.