



Visit to Mount Sicker— An Eye-Opener to Local Business Men

VICTORIA'S NEAR-BY MINES

A Second Rossland Camp Opened up by Energy Of Mr. Henry Croft

On Saturday last the business men's excursion to Mount Sicker and the logging camps of Chemainus took place, and...

NEW WESTMINSTER. Empanelled by Coroner Pitten-

GRAND FORKS. Land, of Vancouver, will shortly...

NELSON. Backs must go. Such was the...

REVELSTOCK. was seen issuing from the factory...

NANAIMO. Directors of the Nanaimo Gas Co.

BIRTHS. BOR—At 784 Cadboro street, Vancouver...

MARRIED. NEY-RUFF—At Rossland, on May...

DIED. RBMAN—On the 15th inst. at Jubilee...

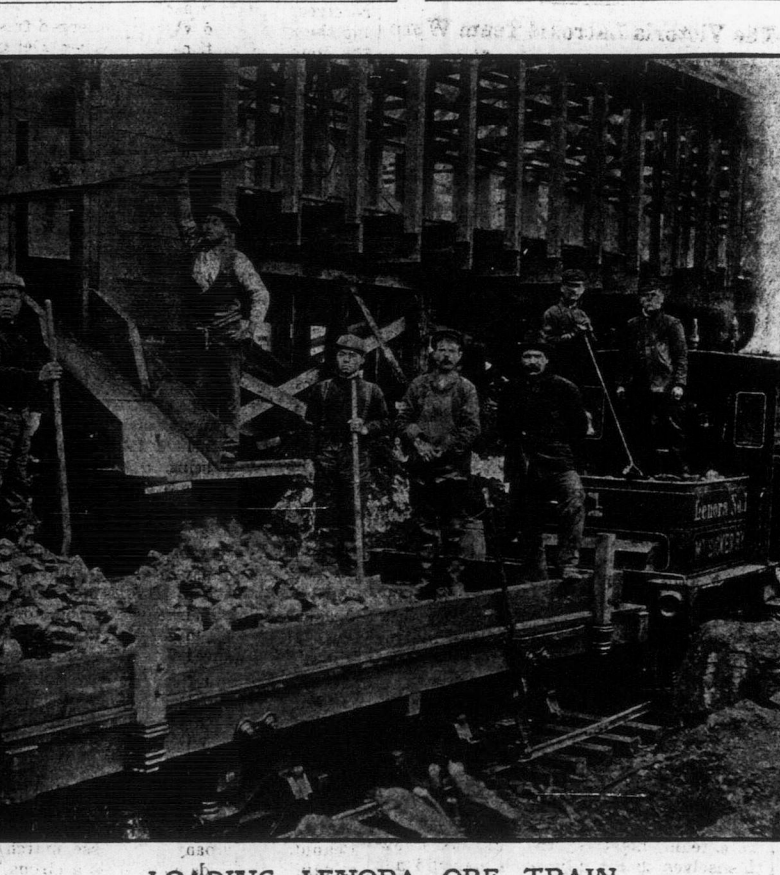
This is due, not to a strike, it is explained, but to an overhaul of machinery...

The train left the E. & N. station at 7 o'clock on Saturday morning with about...

The little party then took up their positions on the points of vantage afforded...

At Duncan, which was reached about 11 o'clock, the first break in the party...

farms have been bonded and where a smelter is to go up in the immediate future...



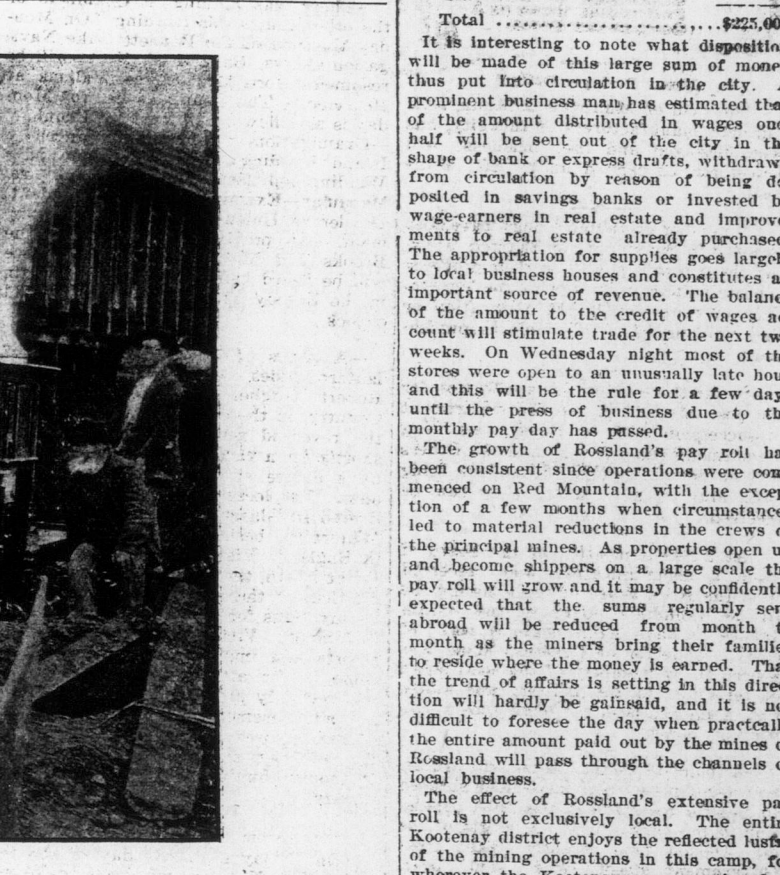
LOADING LENORA ORE TRAIN.

cluded two ladies, through the levels. These have been described a number of times...

Higher up the mountain the Tykes management are digging out the same...

T. Redfern, Dr. Jones, Hon. Abram Smith, A. Wilson and others spoke in a similar strain.

Miss Florence Newman, who has been a great sufferer from muscular rheumatism...

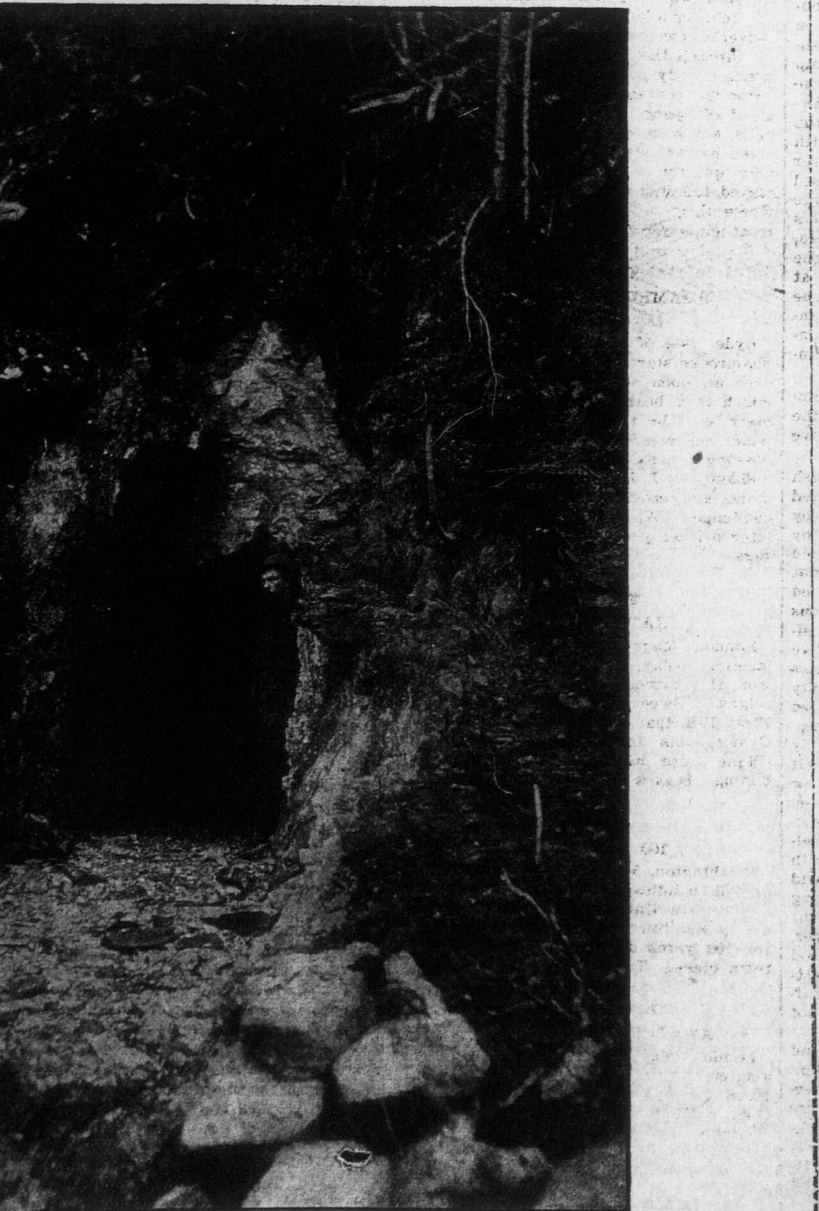


SECTION OF THE LENORA RAILWAY.

Evening News

Pay Day in Rossland Camp. Wednesday was pay day for the miners in the Rossland camp...

'A VERY REMARKABLE REMEDY.' 'It is with a good deal of pleasure and satisfaction that I recommend Chamberlain's...



MOUTH OF COPPER CANYON TUNNEL.

After a hasty survey of the better known properties the two scribes with the party...



SECTION OF THE LENORA RAILWAY.