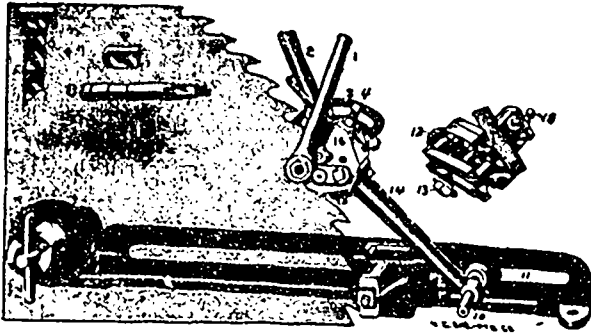


Hanchett's Adjustable Saw Swages



The accompanying cut represents our SWAGE AND JOINTER for circular saws.

Without question the best Swaging Machine in existence.

We also make SWAGES FOR BAND SAWS, GANG SAWS AND BAND RESAWS.

We invite correspondence from Canadian mill operators and supply houses, mentioning this paper.

HANCHETT SWAGE WORKS, Big Rapids, Mich.

"THE REEVES"

For Saw or Planing Mill work "The Reeves" Wood Split Pulley is the favorite. A good, strong, durable pulley made honestly and made right.

Reeves Pulley Manufacturing Company, Limited
17 PEARL STREET,
TORONTO, ONT.

GET OUR PRICE LIST AND DISCOUNTS

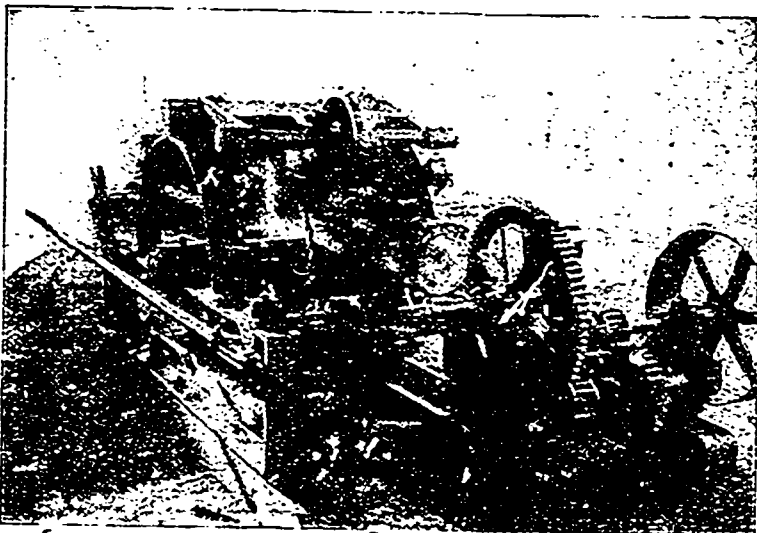
THE BEST IN THE WORLD

There is no doubt about the fact that the

RODGERS Adjustable Log Siding Machine

is without a peer.

This machine will slab opposite sides of a log in one operation at the rate of two thousand logs in 10 hours.



A MONEY MAKER

A MONEY SAVER

HUNDREDS OF LETTERS RECEIVED LIKE THIS:

RODGERS IRON MANUFACTURING CO., Muskegon, Mich.
Gentlemen.—Replying to yours of recent date and referring to your adjustable log siding machine, must say it has given us general satisfaction, and we have done good work with it. Any one desiring a machine of this style for the purpose of slabbing small logs, we would recommend yours.
Respectfully,
WEYERHAEUSER & DENKMAN

For full particulars and literature, mention this paper and address.

RODGERS IRON MFG. CO.
MUSKEGON, MICH.

HIGH GRADE RUBBER BELTING

"MONARCH" "RED STRIP" AND "LION" BRANDS.

These well known grades of Rubber Belting are used by the principal lumber and saw mills from the Atlantic to the Pacific. Unequalled for durability, tensile strength and power-transmitting qualities.

"REDSTONE" SHEET PACKING.

The most satisfactory Sheet Packing. Remains flexible under the highest pressures. Does not blow out or require any following up.

MILL AND FACTORY FIRE HOSE.

Are you sufficiently supplied with Fire Hose, and if so, is it in good condition for immediate use? If not, let us send you a Post Graduate treatise on the subject. We are the largest manufacturers of Fire Hose in Canada.

THE GUTTA PERCHA & RUBBER MFG. CO.

of TORONTO, Limited.

Head Office and Warerooms,

45, 47 and 49 West Front Street

TORONTO, CAN.

Branches, Montreal and Winnipeg.

DO YOU LACK STEAM?

WE CAN HELP YOU.

The Gordon Hollow Blast Grate



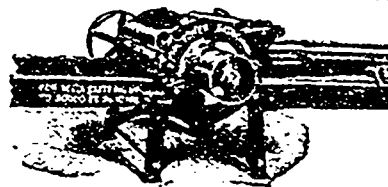
Makes two boilers do the work of three.

Generates more steam than any other mechanical device in existence.

Cheapest Edgers on Earth! Take up little room, require little power, and do perfect work.

Why pay twice as much for an edger requiring double the power and floor space, and doing no better work?

900 IN DAILY USE.



The TOWER 2 and 3 Saw Edgers, Improved, for mills cutting up to 20,000 ft. in ten hours, and the TOWER EXTRA 3-saw Edger, for mills cutting up to 30,000 ft.



The TOWER One-Man 2-Saw Trimmer. With this trimmer one man can easily trim the output of a mill cutting up to 30,000 ft. in ten hours.

"The TOWER One-man 2-Saw Trimmer is far superior to one we bought eight or ten years ago for twice as much. It has given entire satisfaction."

DISMICKS LUMBER CO.,
Gallatin, Tenn.

—Manufactured Only by—

Gordon Hollow Blast Grate Co.,
GREENVILLE, MICH.

SEND FOR CATALOG D.

ESTABLISHED 1887