

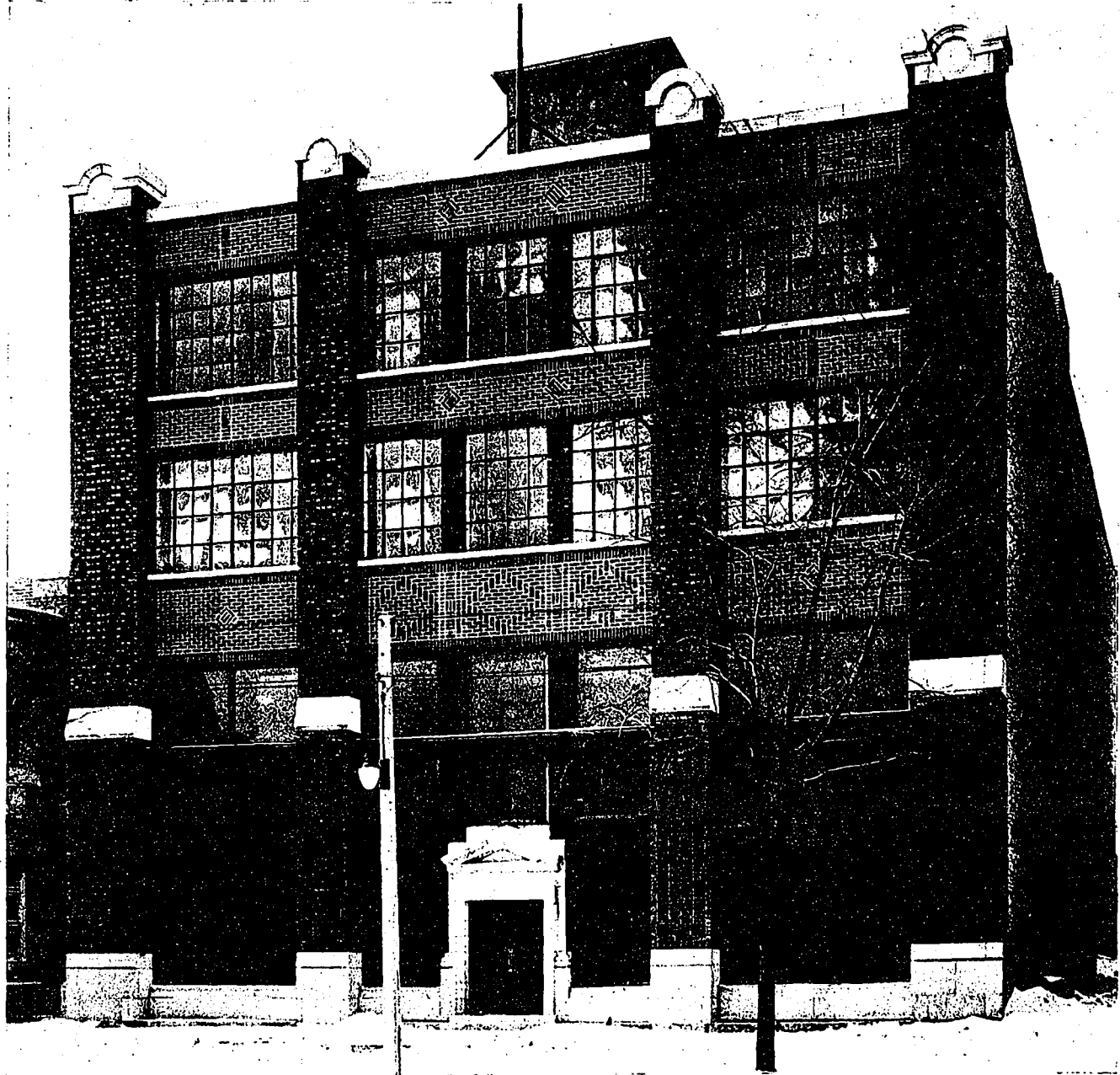


# A Reinforced Concrete Garage, Toronto, Ont.

THE new home of the Automobile and Supply Company, Ltd., is located on the west side of University Ave., a short distance south of Anderson. It extends through to Simcoe Street, giving admission to the building from both ends. As University avenue is perhaps the greatest automobile thoroughfare in the city, and as its use for this purpose will probably

with a basement at the Simcoe street end.

The building is constructed of reinforced concrete with brick spandrel walls. The elevation on University avenue is faced with artificial stone and tapestry brick. The brick in the spandrels over the windows are buff in the centre of the panel and dark brown in the margin. The columns are faced with dark red brick with



GARAGE, AUTOMOBILE AND SUPPLY CO., LTD., TORONTO, ONT.

HARKNESS & OXLEY, ENGINEERS.

SHEPARD & CALVIN, CONSULTING ARCHITECTS.

very greatly increase in the future, the location is most undoubtedly an excellent one.

The building will be devoted to the sale, storage and repair of automobiles, and every facility for these purposes has been provided. It has a frontage of sixty-two feet on each street, and a length of one hundred and twenty-seven feet. It is four storeys in height,

squares at the corners of the panels of enamelled green brick. The brick work joints are half an inch thick, and are raked out half an inch. On Simcoe street the concrete columns were allowed to show, only the spandrels over the windows being faced with brick. The outside columns and beams of the side walls are set back sufficiently to allow a course of brick to be carried