

JAMES LESLIE,

MANUFACTURER OF

CARD * CLOTHING,

LOOM REEDS,

LEATHER BELTING,

**COTTON and WOOLLEN MILL
SUPPLIES, &c.**

428 ST. PAUL ST.

CORNER ST. FRANCOIS XAVIER STREET,

MONTREAL.

CHAS. F. TAYLOR,

Successor to Burgess Cop Tube Co.,

Manufacturer of

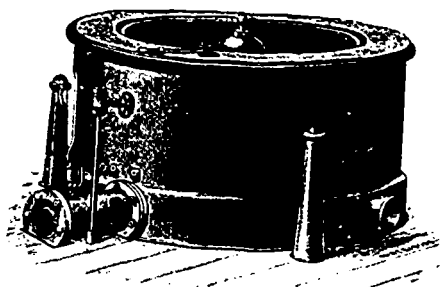
PAPER COP TUBES,

5 Custom House St.

PROVIDENCE, R.I.

U. S. A.

Broadbent's Hydro Extractors.



**DIRECT STEAM DRIVEN. NO SHAFTS OR BELTING REQUIRED.
SUSPENDED ON LINKS AND REQUIRING NO FOUNDATIONS.**

**ADAPTED FOR MANUFACTORIES, DYEHOUSES, LAUNDRIES,
CHEMICAL WORKS, SUGAR REFINERIES, &c., &c.**

SEND FOR CATALOGUE.

THOMAS BROADBENT & SONS,

Central Iron Works, CHAPELHILL, HUDDERSFIELD, ENGLAND.

Telegrams: "**BROADBENT, HUDDERSFIELD.**"

LAMKIN'S PATENT.



A Great Loss.

If you have any Pipes or Boilers uncovered you are losing on same at the rate of 30 cents every year on each square foot of surface exposed. By having them covered with our Mineral Wool Sectional Covering you will save 85 per cent. of this loss. The saving thus effected in fuel will in one year more than pay the cost of covering, which we guarantee to last as long as the pipes.

Our covering is the best fuel saver on the market.

Canadian Mineral Wool Co., Ltd., 122 Bay Street,
TORONTO.