

## C.L.B. Cadets



Haig weather still on top at the C.L.B. Cadets Camp at Topsail Tuesday was spent in the usual routine manner. Capt. R. W. Sheppard was Orderly Officer for Tuesday and Wednesday, and Portugal Cove Company can all feel proud of his work. Lance Corporal Whitten has been appointed Postmaster in charge of all Camp mails, and he is always on the job. A prize has been offered for the best kept tent. Lads are all keen on winning this prize as they have the championship for the year.

Yesterday afternoon the annual Camp Sports were held. The Battalion Brass Band and Pyramid squad were on duty helping the Mount Cashel Orphanage. The prizes were won by the following:

**C.L.B. CAMP SPORTS, July 30th.**  
100 Yards, Senior—1st, R. Cranford; 2nd, D. Badcock.  
100 Yards, Junior—1st, R. White, Grand Falls; 2nd, J. Greely, Portugal Cove.  
1/4 Mile, Senior—1st, D. Badcock; 2nd, W. Calk.

1/4 Mile, Junior—1st, R. White, Grand Falls; 2nd, L. Duffett.  
3 Legged Race, Senior—1st, H. Coghorne, LeMoine (Pta.) Grand Falls; 2nd, Bandmen Cranford, Sergt. Mitchell.

Boat and Barrel, Junior—1st, W. Carson, Grand Falls; 2nd, J. Greely, Portugal Cove.  
Sand Bar Swing—1st, E. Cranford; 2nd, Sergt. L. Hooker.

Kit Race—1st, J. Snow; 2nd, G. Allan, Grand Falls.  
1 Mile, Senior—1st, J. Ralph; 2nd, Pte. LeMoine, Grand Falls.  
220 Yards, Junior—1st, R. White, Grand Falls; 2nd, G. Noseworthy.

Leap Frog, Junior—1st, Ptes. Snow and Reid; 2nd, Ptes. Snow and Crane.  
Cavalry Tournament—1st, Pair, Lieut. H. Rendell and Pte. Taylor; 2nd, pair, Ptes. Waugh and Frost, Grand Falls.

3 Mile Road Race—1st, J. Ralph; 2nd, Pte. Crane.  
Football Sixes—St. John's vs. Outpost Company; won by St. John's, 1 corner.

Relay Race—Grand Falls vs. City. Won by City, Cranford, Rees and Badcock.

Lieut. Eric Jerrett acted as Referee. Private Jordan Greely, of Portugal Cove Company, has been promoted Lance Corporal for his general efficiency in Camp. Lance Corporal L. Wiseman and W. Calk have also received their first stripes. Private A. Norman was also appointed Acting Lance Corporal. Congratulations, Company Sergt. Major Constable of Grand Falls is Acting Regt. Sergt. Major. Well done Grand Falls.

During Tuesday evening the representatives of Camp visited the home of Dr. Fred Burden, the Chief Medical Officer, who has been most attentive to his duties in rendering medical assistance and seranaded him, voting him one of the most popular officers on duty. The genial doctor acknowledged the compliments paid him by the Camp Contingent very modestly, and assured them that the lads had always his hearty good wishes. The Colonel and Headquarters Staff are very grateful to the following gentlemen who very generously and voluntarily contributed towards the heavy burden of this year's camp: Hon. Sir Edgar Bowring, \$50.00; East End Baking Co., \$5.00; Mr. James Ayre, \$5.00; O. Comrade John Colyer, one of the first members of the Brigade in Newfoundland, \$10.00, and \$5.00 from ex-Private No. 378. Thank you, gentlemen very sincerely for your encouragement and support.

Last night at nine o'clock the Band were motored in from Mount Cashel and provided excellent music for the Officers' Dance in the Orange Hall. The dance was very jolly and the social event of the camp, being attended by the Cadets and the youth and beauty of Topsail with many of the visitors from the city. The tea tables at the Garden Party were presided over by Mesdames A. Pittman of the Rectory, Tasker Cook, Perlin, W. H. Hyman, George Himecock, Wm. Healey, Hibbs, John Chaytor, Tobias Mercer, Fred Chaytor, Edward Chaytor, Alex. Chaytor, Charles Mercer; and Misses Pittman and Hyman.

The gatekeeper was Mr. Alexander Squires, who collected nearly fifty dollars admission fees. The visitors all voted the afternoon most enjoyable. The gross proceeds were about \$300.

To-day, Thursday, at noon the 1st Newfoundland Regiment C.L.B. Cadets will be officially inspected by his Excellency the Governor, who will be accompanied in all probability by the Vice-Admiral of the North Atlantic Fleet, Sir James A. Ferguson, K.C.M.G., G. of H.M.S. Calcutta and Sir Archibald Gibb, whom we understand, afterwards will be lunching at the country residence of his Worship Mayor Cook.

The new five cent size of Ivory Soap is so dainty enough to fit the most delicate of slim feminine fingers—ad, if



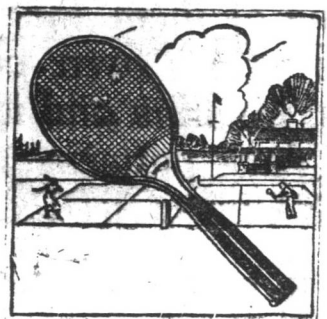
# GREAT PRE-REGATTA SALE

## of Summer Merchandise

### FRIDAY, SATURDAY, MONDAY & TUESDAY

From now until Regatta Day our entire stock of Summer Merchandise will be offered at substantially reduced prices; thus providing timely economy opportunities to prepare for Regatta Day and the many weeks of fine weather yet to come. Every department will be participating in this event; offering the necessary articles to make Regatta Day a decided success for you, and at prices that will mean a great saving.

### Don't Fail To Take Advantage of This Event.



### SPORT SHOES

#### Greatly Reduced

During the Regatta Sale we offer our complete stock of Canvas Footwear at very special prices. Our splendid assortment for men, women and children are of a very special quality, unsurpassed for style and comfort.

**Men's Canvas Oxfords.**  
Fine quality, in White, Brown and Black, rubber soles; sizes 6 to 10. Reg. \$1.35 pair. Sale price . . . . . \$1.22

**Men's Oxfords.**  
Best quality Canvas, in Brown and Palm Beach, leather soles and heels. Reg. \$2.65 pair. Sale price . . . . . \$2.39

**Tennis Oxfords.**  
For boys and youths, made of fine Canvas, in White, Brown and Black, with rubber soles.  
Youths' size 11 to 2. Reg. \$1.15 pair. Sale price . . . \$1.04  
Boys' size 2 1/2 to 6. Reg. \$1.30 pair. Sale price . . . \$1.17

**Women's Tennis Shoes.**  
Fine Canvas, in White and Brown, rubber soles; sizes 2 1/2 to 6. Reg. \$1.25 pair. Sale price . . . \$1.13

**Canvas Oxfords.**  
Women's Canvas Oxfords, leather soles, Cuban heel; sizes 2 1/2 to 6. White Canvas, trimmed with Brown Suede. Reg. \$5.00 values, pair. To clear . . . \$1.98

**Women's Canvas Shoes.**  
In Laced and Pumps, spool heels, leather soles; sizes 3 to 6. Reg. \$2.50 pair. To clear . . . . . 99c.

**Women's Canvas Shoes.**  
Laced style, with heavy rubber heels and soles, ideal for street wear; sizes 3 to 7. Reg. \$4.20 pair. To clear . . . . . \$1.35

**Children's and Misses' Tennis Shoes.**  
Black, Brown and White Canvas, with rubber soles. Children's size 4 to 10. Reg. \$1.05. Sale price . . . \$1.02  
Misses' size 11 to 2. Reg. \$1.15. Sale price . . . \$1.04

**Smallwares**  
**Mouth Organs.**  
A big assortment, all at reduced prices.  
Reg. 20c. each. Sale price . . . . . 18c.  
Reg. 35c. each. Sale price . . . . . 24c.  
Reg. 50c. each. Sale price . . . . . 40c.  
Reg. \$1.20 each. Sale price . . . . . \$1.09

**Accordeons.**  
A special assortment of best quality accordeons offered at Sale price.  
Reg. \$4.25 each. Sale price . . . . . \$3.74  
Reg. \$4.50 each. Sale price . . . . . \$3.92  
Reg. \$5.00 each. Sale price . . . . . \$4.30

**Aluminum Drinking Cups—Collapsible.**  
Reg. 18c. each. Sale price . . . . . 15c.

**LION BRAND SHOE POLISH—Black, Oxblood and White.** Special per tin . . . . . 14c.

**STACOMB—Keeps the hair in place.** Special per tin . . . . . 48c.

**Clearance of SUMMER MILLINERY**  
Our entire stock of Summer Millinery offered during this sale at Half Price. Every type of Summer Hat is included from the latest styles, trim and jaunty to the lovely larger shapes for evening wear, and every Hat is distinctive—out of the usual—beautifully made of fine materials—such hats as one very seldom finds in a sale at such wonderful reductions.

The values are so exceptional that we do not believe there will be a single Hat left, when the Store closes Tuesday evening. If you need a Hat to complete your holiday outfit, this is your chance to secure one

**Half Price**



### UNUSUAL HOSIERY VALUES

This is a splendid opportunity to secure your summer hosiery, at a wonderful saving in price.

**Black Silk Hose.**  
Women's Silk Hosiery, double heels and toes, Lisle garter tops, all sizes. This is the biggest bargain we have offered in silk stocking for a long time. Don't fail to take advantage of this great pre-Regatta offer, worth double the price asked, Friday, Saturday, Monday and Tuesday To clear . . . . . 21c.

**Women's Cotton Hose.**  
Size 3 1/2 to 10, in White, Brown and Black, full fashioned, double heels and toes. Special pre-Regatta price the pair . . . . . 18c.

**Women's Silk Hose.**  
Colors of Fawn, White, Grey and Black, full fashioned, double Lisle heels and toes, wide garter tops; size 3 1/2 to 10. Reg. 75c. pair. Sale price . . . . . 68c.

**Silk Hose.**  
Full fashioned, leg, double Lisle heels and toes, Lisle garter tops; size 3 1/2 to 10. Colors of Brown and Navy. Reg. 80c. pair. Sale price . . . . . 78c.

**Women's Lisle Hose.**  
A new arrival, in colored Lisle Hose, shades of Grey, Brown and Fawn, full fashioned, double heels and toes, garter tops; size 3 1/2 to 9 1/2. Reg. 55c. pair. Sale price . . . . . 50c.

**Lisle Hose.**  
Women's Lisle Hose, colors of Fawn, Brown, Grey and Black, full fashioned, leg, double heels and toes, garter tops; size 3 1/2 to 9 1/2. Reg. 65c. pair. Sale price . . . . . 59c.

**Colored Lisle Hose.**  
Shades of Putty, Brown, Fawn, Navy and Grey, mercerized, seamless leg, double heels and toes, garter tops; size 3 1/2 to 10. Reg. 80c. pair. Sale price . . . . . 72c.

**Cashmere Hose.**  
Women's Grey Cashmere Sport Hose, embroidered check design, in assorted colors; size 9 to 9 1/2 only. Reg. \$1.85 pair. Sale price . . . . . \$1.58

**Children's Cotton Hose.**  
Colors of Brown, White and Black, fine rib, fashioned ankle, spliced feet; size 6 to 9. Special pre-Regatta Sale price, the pair . . . . . 21c.

**Pretty Dresses**  
No Summer is complete without its special fashions in Gingham Dresses. New and charming after each tubing, nothing can take the place of such a frock. If they are chosen here, one is sure they have the fineness and firmness of quality which means satisfactory wear.

**Gingham and Linen Dresses.**  
In assorted plain shades and fancy checks with collar and cuffs of organdie, fancy picot edging, straight motifs, finished at waist with long girde, some with pockets, assorted sizes. Reg. \$2.00 each. Sale price . . . \$4.25

**Underskirts.**  
Women's white embroidery Underskirts, with wide embroidery flouncing round tail, chaotic waist, very special value. Reg. \$1.20 each. Sale price . . . . . \$1.05

**Camisoles.**  
White Nainsook Camisoles, nicely trimmed with lace insertion, with lace across top; also lace straps, elastic at waist, assorted size. Reg. 80c. each. Sale price . . . . . 70c.

**at Sale Prices**  
**Chambray Dresses.**  
A very special assortment, in shades of Green, Blue, Pink, Tan, Grey, Hello, Red and Lemon, finished with Peter Pan collar and turned up cuff of organdie, pique, or self material and narrow patent leather belt, or girde, size to fit women and misses. Reg. \$3.00 each. Sale price . . . \$2.69

**Misses' Dresses.**  
Made of fine White lawn, square neck, half sleeves, trimmed with lace and insertion, finished with embroidery flouncing round tail. Reg. \$3.50 each. Sale price . . . \$3.00

**Mystery Bandeau Net.**  
Real silk Net, with Bandeau, ideal for sports and holiday wear. Reg. 30c. ea. Sale price . . . 27c.

**The Dutch Aer-O-Net.**  
Shades of Navy, Cream, Pink, Pale Blue and Cream; just the thing for sport wear; also for maids. Reg. 70c. each. Sale price . . . . . 60c.

**Holiday Wear for Men**  
This store is prepared to furnish a man with all his needs for the "Day of the Races" at exceptionally low prices during this sale.

**Grey Flannel Pants.**  
Men's Flannel Pants, cut bottoms, belt of same material with fancy buckle; in combination with a Black Blue or Sport coat, they are very effective; all sizes. Reg. \$7.00 pair. Sale price . . . \$6.50

**White Flannel Pants.**  
Made from best quality White Flannel, well made and finished, cut bottoms and belt strap; all sizes. Reg. \$4.00 pair. Sale price . . . \$3.75

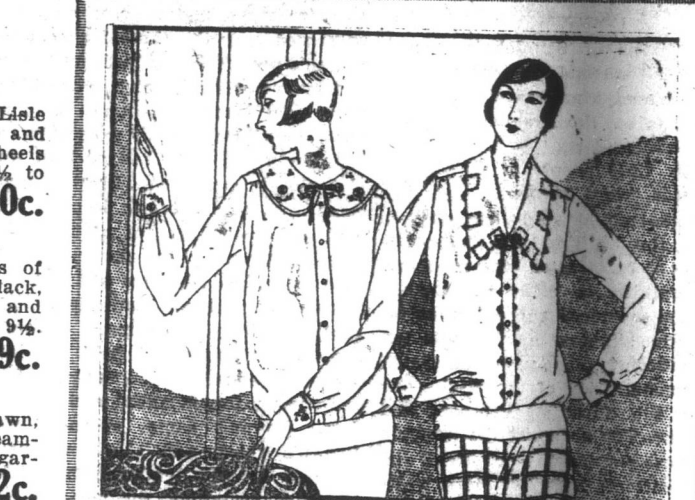
**Men's Socks.**  
Fine Cotton Socks, colors of Brown and Grey, reinforced heels and toes; all sizes. Special per pair . . . . . 21c.

**Men's Wool Socks.**  
All wool ribbed Cashmere Socks, shades of Blue, Grey, Fawn and White. Summer weight, English manufacture; all sizes. Reg. 80c. pair. Sale price . . . 70c.

**Men's Ties.**  
Wide flowing and Ties, in all the latest shades and designs, including Stripes, Spots, Floral designs and plain shades. Reg. 35c. each. Sale price . . . 32c.



**The Royal Stores, Ltd.**



### Very Special Values in BLOUSES & SWEATERS

A splendid showing of Blouses and Sweaters, stylish models that will please your sense of fashion, at very special prices during Regatta Sale.

**White Voilet Smocks.**  
Peter Pan collar, half sleeves, prettily embroidered front, finished with fine Valenciennes insertion and pin tucks. Reg. \$2.20 each. Sale price . . . . . \$1.89

**Shantung Shirt Waists.**  
Natural Shantung, two way collar, long sleeves with cuffs. This is a splendid wearing material, washes and lathers beautifully. Reg. \$3.75 each. Sale price . . . \$3.29

**Wool Jackettes.**  
Tuxedo collar, long sleeves, wide hipper band, buttoned at side, combined shades of Pearl and Mauve, Sand and Nigger, Jade and Sand. Reg. \$3.75 each. Sale price . . . \$3.15

**Sweater Coats.**  
All Wool, Tuxedo collar and girde; sizes 36 to 44, color of Sand, Rose and Navy, Black, Tomato, Honeydew, White, Saxe and Peacock. Reg. \$5.65 each. Sale price . . . \$4.69

**Women's Sweater Coats.**  
The new Cardigan style, some buttoned front, others buttoned side, fancy brushed wool front, plain sleeve and back, with and without pockets, in combination shades of Pearl and Tomato, Champagne and Cocoa, Sand and Nigger, Peacock and Pearl and plain shades of Pearl, Sand and Mauve. Reg. \$4.50 ea. Sale price . . . \$3.75

**Stationery**  
**CARDBOARD PLATES—Large size.** Special per dozen . . . . . 75c.

**PAPER DOILIES—Special per dozen . . . . . 5c.**

**CREPE PAPER TABLE COVERS—3 1/2 yards long.** Reg. 32c. each. Sale price . . . . . 27c.

**CREPE PAPER TABLE NAPKINS—Plain and Fancy.** Special per hundred . . . 23, 40 \* 75c.

**WAXED PAPER—20 sheets to roll; size 12 x 15.** Special per roll . . . . . 7c.

**BALLOONS—Assorted colors.** Special each . . . 2c.

**WINDMILLS—With whistles.** Special each . . . 7c.

**at Sale Prices**  
**White Turkish Towels.**  
Made from heavy quality Turkish cloth, with fringed ends; size 22 x 25 . . . . . 45c.

**H. S. Towels.**  
White Turkish Towels, with H. S. ends, extra heavy quality. Size 22 x 45. Reg. 80c. each for . . . 72c. Size 23 x 45. Reg. \$1.00 each for . . . 90c. Size 25 x 45. Reg. \$1.20 each for . . . \$1.17

**Colored Turkish Towels.**  
Made from best quality striped Turkish cloth; size 24 x 48. Reg. 75c. each . . . 68c.

**Face Cloths.**  
Turkish Face Cloths, of a special quality, cream ground, in assorted check effect, in a generous size. Special each . . . . . 9c.

**TOILET**

**NEEDS REPAIRS.** Complaint is made that the road to Cape Spear is in an impassable condition for any class of passenger. No repairs have been made to this thoroughfare for the past three years and in consequence it is strewn with boulders.

**GASOLINE AT SILVER LOCKS—Navy Test, 40c. per gallon; High Test, 45c. per gallon.—July 29, 1924.**

**MINARD'S LINIMENT FOR DISTEMPERS.**

### TO-DAY'S MESSAGES.

**TRAIN ACCIDENT ON LONG I.**

**NEW YORK, July 31.**  
A woman was killed and twenty seven persons injured, thirteen of them seriously, late this afternoon when several cars of an express train on the Long Island Railroad jumped the rails, one of them sideswiping an electric locomotive on an adjacent track at Woodside L.I. The 13 seriously injured were brought to the Pennsylvania Station in a special ambulance train and then transported to Bellevue Hospital.

**FULL PREPARATIONS FOR 500 MILE FLIGHT TO ICELAND.**  
KIRKWALL, SCOTLAND, July 31.

Lieut. Lowell H. Smith, Lieut. Leigh Wade and Lieut. Erik Nelson, the American Army round-the-world aviators with their mechanics, Lieutenant L. P. Arnold, Sergt. A. Morgan and Lieut. John Harding, Jr., who arrived here this afternoon from England will attempt to continue their transatlantic jump to-morrow morning if the weather permits. This was decided upon this evening at a conference between the aviators and Rear Admiral Magruder, commander of the United Light Cruiser division scouting fleet. The departure will be made shortly after six o'clock in the morning on the receipt of a message concerning weather conditions from Iceland. The early take off will give the aviators plenty of daylight for the five hundred mile trip which lies before them to Havnafjord on the southeast coast of Iceland.

(On board U.S.S. Raleigh)—The United States cruiser Raleigh advance guard of the United States naval vessels which are mothering the flight of the round the world fliers over the dangerous waters of Greenland and Iceland tonight is approaching the Iceland coast. Early to-morrow morning she expected to take the upper position near Havnafjord to await the coming of the aviators. All indications point to good flying weather to-morrow when the United States airplanes are scheduled to hop off from Kirkwall Orkney Islands. By early morning the Raleigh and the destroyers Reid and Billingsly which are assigned to protect this leg of flight will be in position and ready for any call.

**SQUADRON EN ROUTE TO HALIFAX.**  
KINGSTON, Jamaica, July 31.

The British special service squadron comprising the Hood, the Resolute and the Adelaide sailed this morning for Halifax.

**BY COMMON CONSENT.**  
PETERBORO, Ont., July 31.

Clashed in each others arms, the bodies of Samuel Taylor and Mrs. Joseph Sharpe were found floating on the Otonabee River near here shortly after six o'clock to-night.

Coroner Young, after viewing the remains, decided that an inquest was unnecessary, that in each case death was due to suicide. The position of the bodies tightly clasped together he said gave every evidence that the act had been premeditated and there was no indication that there had been any effort on the part of either to save the other. They were both about forty years old.

**DOG BITTEN BY A MAN.**  
MONTREAL, July 31.

Horace Greeley, in telling an inquiring young reporter that it was the unusual which constituted news, once cited that if a dog bit a man it was not news, but if a man bit a dog, to spare no expense to get to his editor. Three local men, H. B. Talley, J. B. Walford, and a Montreal Star reporter announced that they have at last tracked the Horace Greeley story to earth. While vacationing in the Laurentians, they saw a lumberman attacked by a dog which he had accidentally hit with a stone. The dog sank its teeth into the shoulder of the man thick coat, but as the two went down the man sank his teeth into the dog's throat, and the two lay locked together in their grip. The dog was driven off by the party and carries a nasty scar while the man is unscathed.

**GASOLINE AT SILVER LOCKS—Navy Test, 40c. per gallon; High Test, 45c. per gallon.—July 29, 1924.**

**Personal**  
Rev. Dean Jones and Mrs. Jones who have been spending the past month in the city and outports renewing old acquaintances, left for their home, Cincinnati, Ohio, by today's express.

Mrs. Lyman, Calvert, H. Sowers, I. H. Johnson, J. McKay and H. Snow who were spending a holiday at Shipwreck, South East Placentia, whirling the nearby streams, returned to town Tuesday having had great success. The party secured 17 fine salmon, the average weight being 12 lbs.

**NEEDS REPAIRS.** Complaint is made that the road to Cape Spear is in an impassable condition for any class of passenger. No repairs have been made to this thoroughfare for the past three years and in consequence it is strewn with boulders.

**GASOLINE AT SILVER LOCKS—Navy Test, 40c. per gallon; High Test, 45c. per gallon.—July 29, 1924.**

**MINARD'S LINIMENT FOR DISTEMPERS.**