

CHINAWARE. Geo. Knowling GLASSWARE.

WE HAVE A STORE FULL OF ATTRACTIVE THINGS IN CHINA AND GLASS. YOU CANNOT HELP BEING INTERESTED BY SOMETHING IN THIS ADVERTISEMENT.

We introduce herewith some of the latest productions.

Personal attention given to all orders.

Dinner Sets.

White and Gold, 26 pieces, containing
6 Cheese Plates.
6 Pudding Plates.
6 Dinner Plates.
3 Meat Dishes.
2 Vegetable Dishes.
1 Sauce Boat.
for \$3.75.

CHINA VASES.

We have a wonderful stock of Vases, the latest creation at lowest prices.

18c. 33c. 55c. 85c.

BERRY SETS

In China, nice patterns, 60c., 70c. \$1.10 up.

Wine Sets.

Lemonade Sets.

PRES-CUT GLASSWARE

in
Preserve Bowls and Dishes,
Butter Dishes, Sugars, Creams,
Footed Bowls, Oval Bowls.
Pres-Cut Glassware has a reputation behind it.

Pudding Bowls.

White Earthenware.
8c. 9c. 12c. 18c.
PUDDING BOWLS.
with Earthenware Cover to tie over
24c. 28c. 33c.
PUDDING MOULDS.
oval shape, 15c. up

Children's Toy Tea Sets

Displayed in box. Something the children can use; 40c., 55c., 75c. Kindly ask to see them.

TETE-A-TETE SETS

China, with Tray. Can show several patterns, from \$1.25.

TRIPLE CHINA TRAY

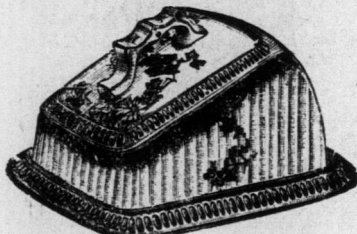
Useful for candy, nuts or fruit. Small size, 20c.; larger sizes, 65c., 95c.

Tea Sets

White and Gold, 21 pieces, containing
6 Cups & Saucers,
6 Tea Plates,
1 Slop Bowl,
1 Cream Jug,
1 Bread & Butter Plate
\$1.15

OIL BOTTLES.
KNIFE RESTS.
S. & P. SHAKERS.
FRUIT BOWLS.
DECANTERS.

HOT WATER JUGS,
Floral Decoration,
25c. 45c. 65c.
HOT WATER KETTLES.
CLOCK SETS.



A CHEESE DISH
is always useful.
35c. 40c. 55c. 75c.

PORRIDGE PLATES.
BABY'S PLATES.
SHAVING MUGS.
10c. 14c. 16c. up.



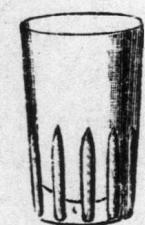
TRINKET SETS,
China Decorated,
85c. 95c. \$1.10 up.
PLACQUES,
China, with Ribbons, 22c.
MOUSTACHE
CUPS & SAUCERS,
12c. to 90c.

Dinner Sets.

A large selection
of Colored Sets on
hand, from
\$3.50 to \$25.00

Tumblers.

Fancy Patterns
from8c.
Moulded4c.
Plain Thin6c.



Salad Bowls,

Dessert Sets,

Teapot Sets,

Biscuit Dishes.

CHINA, CAKE, FRUIT or
BISCUIT BOWLS,
3 inches, with decorations
20c. 25c. 65c.



TOILET SETS.

5 and 6 piece sets.

It is impossible to enumerate all the kinds of Toilet Sets we carry.

5 piece Sets \$1.75
6 piece Sets \$2.15

Jugs, Painted, Large Size, 25c.



Plates
Meat Dishes
Vegetable Dishes
Gravy Boats
Sauce Tureens
Toilet Ewers
Toilet Basins
Jelly Shapes
Soup Tureens
Mixing Bowls

Marmalade Jars
Biscuit Jars
Double Dishes
China Figures
Umbrella Stands
Toilet Racks
Spoon Holders
Sardine Dishes
Souvenir China
Photo Frames

Make your money buy its utmost. We offer you the latest creations in China and Glassware at such low prices that you cannot resist buying.

CHINA

21 pieces; several designs and shapes; gold edges.

\$1.75, \$1.85
and
\$2.10 set.



TEA SETS.

21 pieces; a dainty Rose, Wreath and Bud decoration. Special offer,

\$1.95



FANCY TEAPOTS

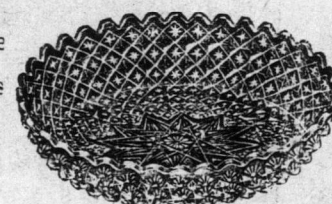
A variety of shapes and patterns, from 18c. to \$1.50 each.

Real Cut Glassware

Bowls, Preserve Dishes,
Oil Bottles, Decanters,
Bon Bons, Jugs, Vases,
Plates, Comports, etc.
Price and quality second to none.

SILVER DEPOSIT GLASSWARE.

Dainty designs on exquisite shape Jugs, several sizes; Sugar Bowls, Vases, Salt and Pepper Shakers, Perfume Bottles, etc. Small pieces from 60c. per piece.



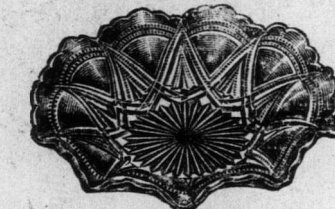
Extra Strong Stoneware.

Buff and Brown Color grounds.

Teapots,
Coffee Pots,
Cocoa Jugs,
Bean Crocks.

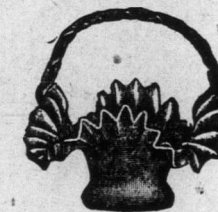


Fireproof Earthenware, Green ground.
Tea Pots,
Cocoa Jugs,
Porridge Bowls,
Entree Dishes,
Pie Dishes,
Coffee Filters.



COLORED GLASS CAKE DISH, 18c.

Wire Handles, 5c.
GLASS SALVERS,
20c. 24c. 35c. up.
INDIVIDUAL GLASS TABLE SETS, 20c.
PICKLE JARS, 22c. to 85c.



FANCY GLASS BASKETS, 18c.

Champagne Glasses.
Claret Glasses.
Custard Cups.
Jelly Glasses.
Lemon Squeezers, 10c.
Casters, 2 and 3 bottle.
Flower Stands.
Glass Sets, 4 piece, from 35c.

Tea Sets

40 pieces.

We have all the latest shapes; a choice selection, from

\$3.95 up.

G. Knowling.

China and Glassware Department.

G. Knowling.

Royal William Lodge, L.O.A.

The annual meeting of Royal William Lodge, No. 20, Loyal Orange Association, was held in the Lodge room on Thursday, 5th inst., presided over by the W.M., assisted by a complete staff of officers and a large attendance of members. The various reports showed the lodge to be in a healthy condition financially and numerically. Subsequent to the delivery of the W.M.'s address, P.M. Bro. William Bragg, assumed control for the purpose of conducting the election and installation of officers for the ensuing year. Those honored with positions are:

D. M., John Farrell, elected.
Chaplain, Bro. Henry Bragg, elected.
R.S., Bro. James Stevens, elected.
F.S., Bro. George Evans, re-elected.
Treas., Bro. Jas. H. Wilcox, re-elected.
D. of C., Bro. James Currie, re-elected.
1st Lecturer, Bro. George Poole, re-elected.
2nd Lect., Bro. George Currie, elected.
I.T., Bro. James Currie, Jr., elected.
O.T., Bro. George Musgrave, re-elected.
Committee, Bros. J. M. Currie, Geo. Currie, S. Musgrave, R. Lawrence, Joseph Huellin.
Finance Committee, W. Bros. C. T. James, Wm. Bragg, Eli Manuel.

Sick Committee, Bros. W. T. Crowe, John Hardy, Joseph Huellin, Joseph Musson. During the interval between election and installation the following resolution was moved by the Master elect, seconded by Past Master Reuben Bennett and carried by a standing vote:

Resolved—That this Loyal Orange Lodge, Royal "William," No. 1429, in annual session assembled, hereby desires to place on record its sincere sympathies with the Brethren of Ulster in their struggle against the granting of Home Rule to Ireland, and also wishes to assure the Brethren of that Province that in the event of the Home Rule Bill passing the Imperial Parliament, the support of this Lodge may be relied upon for assistance in helping to strengthen the resistance of Ulster against this pernicious measure, and, Resolved, that a copy of this resolution be transmitted to the Provincial Grand Secretary of Ulster, Col. R. H. Wallace, C.B. A further copy mailed two of the St. John's dailies, for publication, and that the same be spread upon the minutes of proceedings of this session.

Fatally Stricken.

Mr. Rd. Aspell, a resident of Moore Street, and for years a culler at Goodridge's premises, while passing through William's Lane Friday night was stricken with apoplexy. He was conveyed home and yesterday, after being attended by Dr. Campbell and Rev. Fr. O'Callaghan, he passed away. Little over a year ago his wife died and there are left to mourn him three sons, the eldest of whom is quartermaster on the Stephano, and who left only a few hours previous to his parent's demise. To the bereaved family the Telegram extends its sympathy.

On Second Thought.

If you take his word for it no man's loss by fire was ever fully covered by insurance. If a man is old and sensible the possibility that he is a Theosophist becomes a probability. It is the man who doesn't discuss a thing who is suspected of knowing a great deal about it. When Mother makes a sofa pillow it nearly always is a cushion for Father's rocker. A too fulsome press agent often defeats his own purpose. When a boy picks out a hero it seldom is the minister of his mother's church.

Landing This Day,

15th October,
Choice Cargo Screened
NORTH SYDNEY COAL.
A good time to lay in your Winter's Coal
Morey's Coal is Good Coal.
M. MOREY & CO.