

OUR CHESS COLUMN.

Solutions to Problems sent in by Correspondents will be duly acknowledged.

All communications intended for this department to be addressed Chas Editor, Office of CANADIAN ILLUSTRATED NEWS, Montreal.

TO CORRESPONDENTS

M. J. M., Quebec.—Letter and Problems received. Many thanks. Also Solution of Problem No. 89, Student, Montreal.—Solution of Problem No. 89, received. Correct.

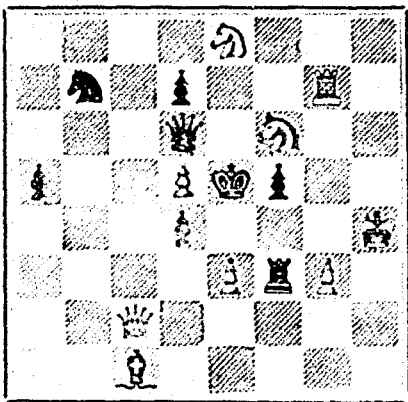
At the request of several Correspondents we insert, this week, the position of the Indian Problem. It is as follows:

WHITE. K at Q R sq R at Q sq H at K R 6 B at K K 2 Pawns at K K 4 K R 2, Q K 3 and Q R 2. BLACK. K at K 5 Kt at K B 6 Pawns at K 4, Q K 3, Q K 4

White to play and mate in four moves. We shall be glad to forward the Solution to any of our correspondents who may require it.

PROBLEM No. 91

By M. J. MURPHY, Quebec. BLACK



WHITE

White to play and mate in two moves.

CHESS IN ENGLAND.

GAME 1351.

Played some little time ago between Messrs. Bird and Wisker.

(GUY LOPEZ)

WHITE.—(Mr. Bird.) 1. P to K 4 2. Kt to K B 3 3. B to Q K 5 4. B to R 4 5. Q to K 2 sq 6. B to Q K 3 7. P to Q B 3 8. P to Q 4 9. B to K 7 10. Kt to Q 2 11. P takes Q P 12. Castles. 13. Q B P takes P 14. Q to Q 7 15. P to Q B 3 16. K B to K sq 17. Q to K B sq (ch) 18. K R to Q sq 19. Q R to Q B sq 20. K takes B 21. B takes Kt 22. R takes P 23. Q R to Q B 24. Kt to B 3 25. P takes Q 26. R takes R 27. K takes B

And Black wins.

NOTES.

(a) An old-fashioned line of attack not often adopted in these modern times, though it should lead to an even game. (b) A disastrous retreat. (c) A terrible coup, from the effects of which there is no escape. (d) Conclusive.

GAME 1352.

Played a short time ago between Messrs. Boden and Potter, at the West End Chess Club.

(Knight's Defence to King's Bishop's Game.)

WHITE. (Mr. Boden.) 1. P to K 4 2. B to Q B 4 3. P to Q 3 4. B to Q B 3 (ch) 5. Q to K 2 6. B to K K 5 7. Kt to K B 3 8. Q Kt to Q 2 9. P takes P (ch) 10. P to K B 3 11. B to K R 4 12. Castles (Q R) 13. B to K K 3 14. Kt to Q K 4 (ch) 15. K Kt to Q 2 16. Kt to Q B 4 17. Kt takes B (ch) 18. B takes B (ch) 19. Kt to Q B 3 20. P to K B 3 21. Kt to Q B 4 22. Q to Q 2 23. Kt takes Kt 24. Q to K 2 25. Q takes P 26. K to Q 2 27. K to K sq

and White resigned.

NOTES.

(a) We should have preferred 4. Q to K 2. (b) Mr. Boden condemns this move as tending to free Black's game. (c) Better, perhaps, to have played the King to this square.

SOLUTIONS.

Solution of Problem No. 89.

WHITE. 1. Kt to Q 8 2. K to Kt 5 3. Mate. BLACK. 1. K to Q 5 2. Anything.

Solution of Problem for Young Players, No. 87.

1. Q to K B 7 2. Q to K 7, mate. 1. Any move.

PROBLEMS FOR YOUNG PLAYERS NO. 88.

WHITE. BLACK

By Mr. J. MURPHY, Quebec. K at Q R 4 B at Q 2 Pawns at Q B 7, and Q K 6. K at Q R sq Kt at Q K sq Pawns at Q R 3, and 4.

White to play and mate in three moves.

MR. BARNJUM



Begs to announce that Classes will commence on MONDAY, 2nd October. The Gymnasium is fitted up in the most complete manner, the apparatus being all first-class, and of the most modern description. The Evening classes for young men will be conducted by Mr. Barnjum and his able assistant, Mr. Wm. Liddell, thereby ensuring to every member a proper share of attention.

CYMNASIUM and ACADEMY of PHYSICAL EDUCATION, 19 UNIVERSITY ST.

14-14-2-162

\$54.50 Can be made in one week at home. Samples free. ADDRESS: MONTREAL NOVELTY CO., 14-14-2-161 236 St. James Street, MONTREAL, P.Q.

NOTICE IS HEREBY GIVEN THAT THE UNDERSIGNED, WILLIAM TAYLOR, of the City of Montreal, Gentleman, will apply the next session of Parliament for the Province of Quebec, for permission to change his name to WILLIAM TAYLOR LINDSAY. WILLIAM TAYLOR Montreal, 7th October, 1876. 14-14-5-103

FOR CHILDREN CUTTING TEETH, LOSS OF SLEEP, DYSENTERY, RESTLESSNESS, CONVULSIONS, COLIC &c. CHILDREN'S CARMINATIVE CORDIAL. POUR LA DENTITION DES ENFANTS, DYSSENTERIE, CONVULSIONS, COLIQUE, PERTE DE SOMMEIL. DEVINS & BOLTON, Druggists, Montreal.

E. N. FRESHMAN & BROS. ADVERTISING AGENTS. 186 W. FOURTH ST. CINCINNATI O. ESTIMATES FURNISHED FREE. SEND FOR OUR MANUAL.

LAWLOR'S CELEBRATED SEWING MACHINES. 365 Notre Dame Street. 14-10-52-91 MONTREAL

\$77 A WEEK to Agents, Old and Young Male and Female, in their locality. Terms and OUTFIT FREE. Address: L.V. VICKERY & CO., Augusta, Maine. 13-1-45

DOMINION PLATE GLASS INSURANCE OFFICE ALEXANDER RAMSAY, 37, 39 and 41 RUCOLLET STREET, MONTREAL. Reference: Citizens' Insurance Co. 13-1-47

\$55 to \$77 a Week to Agents. Samples FREE. P. O. VICKERY, Augusta, Maine.

DR. BULLER, M.R.C.S., ENGLAND, (Late of Berlin, Prussia, and London, Eng.) Oculist and Aurist To the MONTREAL GENERAL HOSPITAL. Office, Corner Craig St. and Place d'Armes Hill. Hours, 1 to 5 P.M., except by special appointment. 13-9-52-90

50 VISITING CARDS, name finely printed, for 25 cents. 1000 Agents wanted. Samples 3c stamp. A. W. KINNEY, Yarmouth, N. S. 13-26-39-131

ARCH. McINTYRE, CARPENTER and JOINER. BANKS, OFFICES and STORES fitted up in the best and most economical style. JOBBING of all kinds promptly attended to. 1078 ST. CATHERINE STREET, (CORNER DRUMMOND. 13-1-52-294



ACME CLUB SKATE. (FORBES' PATENT.)

Used extensively in Europe and America, and acknowledged to be the leading self-fastening Skate in point of quality, finish and convenience. For sale by all respectable dealers. Wholesale orders solicited by THE STARR MANUFACTURING COMPANY, MANUFACTURERS, HALIFAX, N. S. Patent rights secured. 14-12-13-159

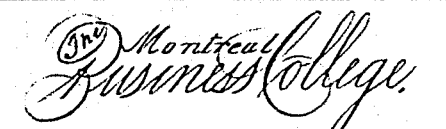
BANKRUPT SALE

OF MILTON GOLD JEWELRY.

We will send you on receipt of FIFTY CENTS, one pair elegant engraved Sleeve Buttons, one set Spiral Studs, one Collar Button, one beautiful Coral Scarf Pin, one Gent's Watch Chain, and one heavy Wedding Ring. Above lot used to retail for \$5.50. Four lots will be sent, post paid, on receipt of \$1.50, and 12 lots for \$4. Address, W. W. Bell & Co., Philadelphia, Pa. 14-11-13-154

THE MAMMOTH PACKAGE.

ALMOST GIVEN AWAY. One Pack of Magic Cards, 1 Pack of Age Cards, 1 Ventriquist Whistle, 1 Magic Transformation Book, 1 Tony Pastor's Greatest Song Book, 1 Mountain Outlaw, a splendid Novel, 1 Map United States, handsomely colored; 1 set of Shirt Studs, very neat; 1 Oriside Watch Chain, handsome. The above sent, post paid, on receipt of 35 cents. M. J. IVERS, 165 Fulton st., New York. 14-11-4-150



Corner NOTRE DAME AND PLACE D'ARMES.

Imparts a thoroughly commercial education, and offers superior advantages for preparing young men for business pursuits. The course includes Book-keeping in all its forms, Commercial and Mental Arithmetic, Correspondence and Penmanship. The progress is rapid and the results beneficial and practical. Special instruction in French and Shorthand. For full information apply at the College or address 1-1-2-77

TASKER & DAVIS.

PATENT VENTILATOR BY GEO. YON, TINSMITH AND PLUMBER. Approved by scientists and artists, and within the means of all.

PRICE LIST Stove Pipe Exhauster, sufficient to aerate rooms wherein the pipes pass \$1.50 Exhauster for Cooking Stoves \$4.00 Hall \$3.00

Complete apparatus of ventilation, consisting in metallic tubes affixed to the ceiling, for dwellings of 4 or 5 rooms in ordinary houses in Montreal. \$50 to \$55 FOR SALE at No. 341, St. LAWRENCE STREET, MONTREAL. LIBERAL DISCOUNT TO THE TRADE. 14-9-13-152

HOPKINS & WILY, ARCHITECTS AND VALUERS, 13-9-52-88 253 ST. JAMES STREET, MONTREAL.

ROYAL INFANTS' FOOD AND INVALIDS. NUTRITIOUS, DELICIOUS & ECONOMICAL FOR SALE EVERYWHERE. 14-1-13-132

Maintina Decorating. In first-class style. J. MURPHY, 706, Craig St., Montreal 14-1-52-135.

JAMES WRIGHT, 501 Craig Street, Manufacturer of Wood CARPETING, CHURCH-Bank, Store and Office Fit, tings, Fancy Wainscots, Parquet Floors, Carving, Turning, Sawing, Planing, &c. 1st prize for Wood Carpeting at Toronto and Ottawa Exhibition of 1874 and 1875 13-8-52-85

\$225! PIANO-FORTES. \$225! Now—fully warranted, 7-octave—all modern improvements—one full, rich and pathetic—exquisite combination, producing a most beautiful orchestral effect. The most thorough test and examination desired. \$225 dollars each. Repairing done in all its branches at moderate prices and warranted.—LEICESTER, BISSIERE & CO., Piano Manufacturers 270 Mountain St. 13-4-52-67

HUTCHISON & STEEL, ARCHITECTS, Valuers of Real Estate, Buildings, &c., 181 St. James St. A. C. HUTCHISON. A. D. STEEL, 13-9-52-87

DR. A. PROUDFOOT, OCUList & AURIST. Special attention given to DISEASES OF THE EYE AND EAR. Artificial Eyes inserted 37 Beaver Hall, Office hours before 10.30 a.m., 3 to 5 and 7 to 9 p.m. 13-7-52-77

THE CANADA SELF-ACTING BRICK MACHINES! Descriptive Circulars sent on application. Also HAND LEVER BRICK MACHINES. 244 Parthenais St., Montreal. 13-12-52-98 BULMER & SHEPPARD.

50 Bristol Visiting Cards, with your name finely printed, sent for 25c. 9 samples of CHROMOS, Snowflake, Damask, Glass, etc., with prices, sent for 3c. stamp. We have over 200 styles. Agents wanted. A. H. Fuller & Co., Brockton, Mass. 14-6-52-143

CHROMOS LARGE AND SMALL—FOR DEALERS, AGENTS AND TEA STORES. The largest and finest assortment in North America. Twenty 2 x 11 Chromos for \$1.00. Address W. H. HOPE, 26 Beury St., Montreal. Headquarters for Foreign and American Chromos. Send for Superbly Illustrated Catalogue. 14-1-26-134

DR. WILLIAM GRAY'S SPECIFIC MEDICINE. The Great English Remedy is especially recommended as an unfailing cure for Seminal Weakness, Spermatorrhoea, Impotency, and all diseases that follow as a consequence of Self Abuse, as Loss of Memory, Universal Lassitude, After-Pain in the Back, Diseases of Vision, Premature Old Age, and many other diseases that lead to Insanity or Consumption and a Premature Grave, all of which as a rule are first caused by deviating from the path of nature and over-indulgence. The Specific Medicine is the result of a life study and many years of experience in treating these special diseases. Pamphlet free by mail. The Specific Medicine is sold by all Druggists at \$1 per package, or six packages for \$5, and will be sent by mail on receipt of the money, by addressing WILLIAM GRAY & CO., Windsor, Ont. Sold in Montreal by R. S. LATHAM, J. A. HARTE, JAS. HAWKES, PICAULT & CO., and all responsible Druggists every where. 14-2-52-136

THE COOK'S FRIEND BAKING POWDER. Has become a HOUSEHOLD WORD in the land, and is a HOUSEHOLD NECESSITY in every family where Economy and Health are studied. It is used for raising all kinds of Bread, Rolls, Pond cakes, Griddle-Cakes, &c., &c., and a small quantity used in Pie Crust, Puddings, or other Pastry will save the usual shortening, and make the food more digestible.

THE COOK'S FRIEND SAVES TIME. IT SAVES TEMPER. IT SAVES MONEY. For sale by storekeepers throughout the Dominion and wholesale by the manufacturer. W. D. McCLAREN, UNION MILLS, 13-17-52-110 55 College Street.

CHEAPEST AND BEST. DAILY WITNESS MONTREAL WITNESS WEEKLY WITNESS CANADIAN MESSENGER NEW DOMINION MONTHLY JOHN DOUGALL & SON, 218 and 220, St. James Street, Montreal. Electrotyping and Job Printing, Chromatic and Plain, cheaply and neatly done. CANADIAN STEAM USERS'

INSURANCE ASSOCIATION CAPITAL, \$500,000. Issues Policies of Insurance, after a careful inspection of the Boilers, covering all loss or damage to BOILERS, BUILDINGS, & MACHINERY, arising from the Explosion of STATIONARY, MARINE and LOCOMOTIVE STEAM BOILERS. Jos. R. REED, General Manager and Sec.-Treas. R. F. HENNESSY, General Inspector. HEAD OFFICE, TORONTO THOS. WILLIAMS, Inspector, American House, Montreal. 13-20-26-125