

GILLETT'S LYE

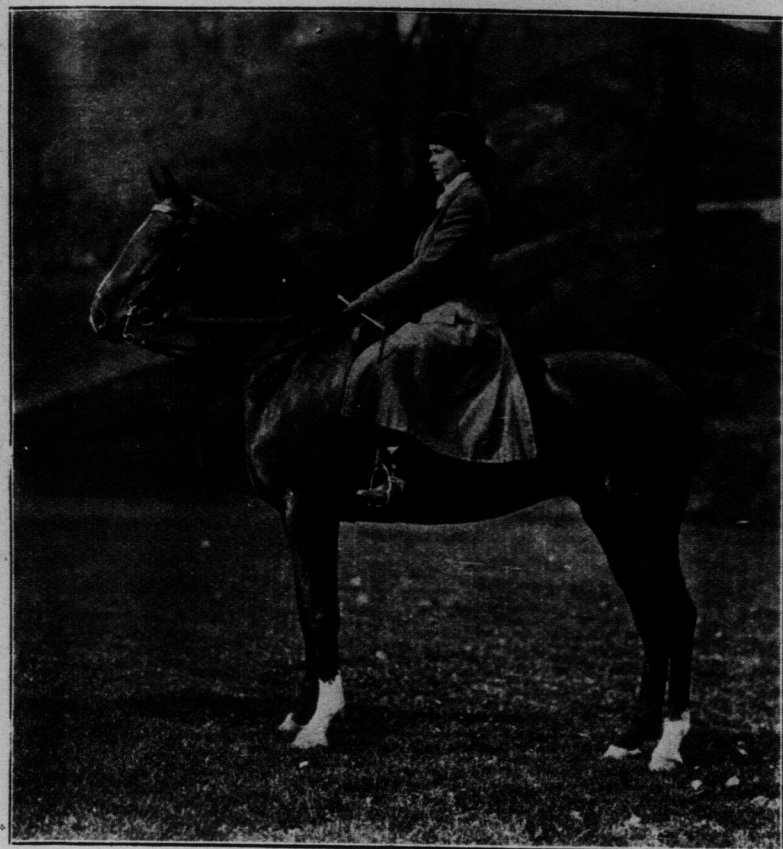
The Standard Lye of Canada. Has many imitations but no equal

CLEANS AND DISINFECTS

100% PURE



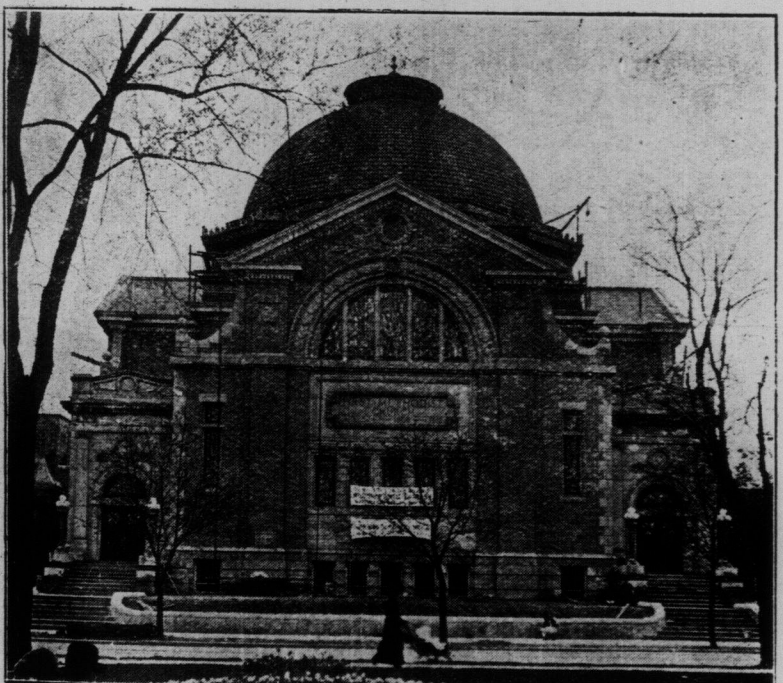

RESIDENTS OF MEXICO CITY SHOW THEIR DISAPPROVAL OF THE AMERICANS BY TOPPLING OVER A GEORGE WASHINGTON MONUMENT.



MARJORIE BONGARD ON "CRICKET," RECENTLY PURCHASED FROM THE KILGOUR STABLES.



THE COMMODIOUS TENT ON THE WHITE HOUSE LAWN WHERE PRESIDENT WILSON IS NOW CONDUCTING THE CHIEF BUSINESS OF THE STATES, AND WHERE HE INTENDS TO DO AS MUCH OF HIS WORK AS HE CAN DURING THE HOT WEATHER.



The new first Methodist opened in Hamilton two Sundays ago. This magnificent edifice is one of the most imposing in Canada. The style is Italian renaissance, the church has a seating capacity of 1,500.



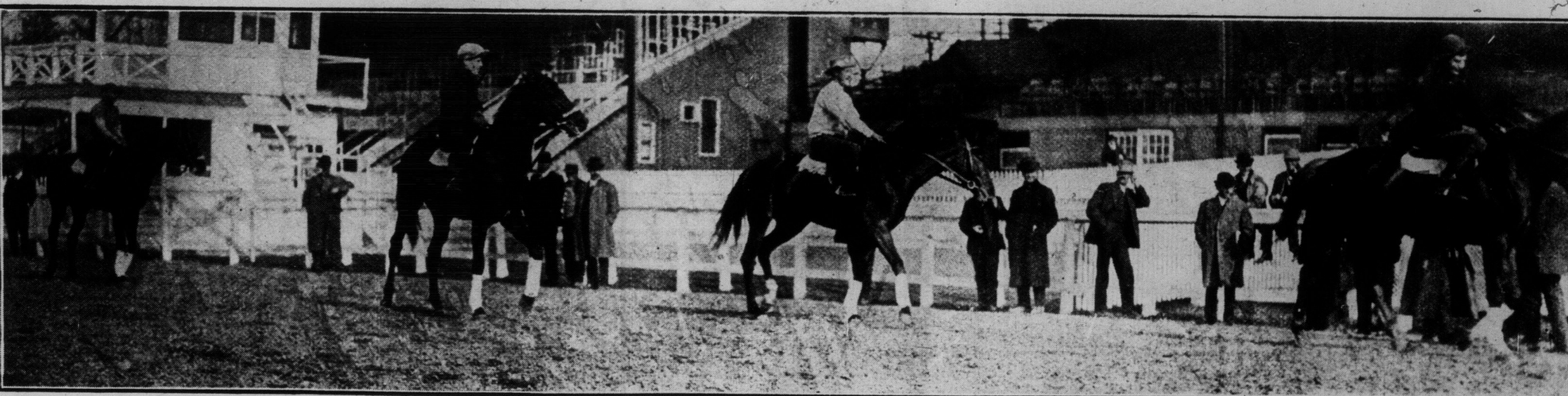
MASQUE!

Even as you cannot judge of her beauty until she removes the masque—so you should not judge the Chocolates by the box alone.

The charm of Neilson's is in the Chocolates—that's where the difference IS.

Neilson's Chocolates

"THE CHOCOLATES THAT ARE DIFFERENT"



SIX O'CLOCK IN THE MORNIN G FOR MANY A DAY HAS SEEN THE RAILBIRDS OUT WATCHING THE WOODBINE TRIALS.



PUPILS OF ONE OF THE CITY'S FARTHEST WEST SCHOOLS—ON WESTERN AVENUE.