

## COUNTY OF ELGIN

### TOWNSHIP OF SOUTHWOLD

**T**HE Township of Southwold adjoins the Township of Dunwich on the west, the Township of Yarmouth on the east, and borders on Lake Erie. It contains about 73,000 acres, with an intelligent population of English, Scotch, and Irish descent. The soil is mainly sandy loam with a clay subsoil, and is very fertile. The land is of a rolling nature. The watershed of Western Ontario passes through the centre from east to west and determines the course of the water which flows northward to the River Thames and southward to Lake Erie. It is one of the best tile drained portions of the Province of Ontario. Instances can be cited where there are forty miles of tile drains on 100 acres.

That portion lying between the ridge or watershed and the six miles of lake front is very suitable for the production of small fruits, such as cherries, plums, pears, peaches, strawberries, and raspberries, as well as apples, beans, tobacco, and garden products.

The educational and religious life of the township is well looked after by fifteen churches and seventeen schools. Its railroads and marketing facilities are unexcelled in America. Four systems of railways with three roadbeds—the Michigan Central, the Pere-Marquette, the Grand Trunk and Wabash, run east and west, giving direct connection with all the large centres of population. Two roads run north and south, viz., the St. Clair division of the M. C. R. and London and Lake Erie Railway and Transportation Co., the latter giving hourly service along the eastern border of the township and direct connection with London, St. Thomas and Port Stanley. The roads of the township compare favorably with any in the Province, and it has a net-work of rural telephone lines and daily mail delivery routes.

The township possesses no fewer than ten villages, which make it very convenient for the farmer. Last year from the Village of Shedden alone over 300 car loads of live stock, valued at over \$60,000, were shipped. Aside from this, the production of milk, cream, butter and cheese, fruit, vegetables and garden truck, all add enormously to the annual revenue.

There is a very general demand for farm laborers. A large acreage now devoted to pasture could easily maintain additional herds and flocks, or might be utilized for intensive farming.

For further information, apply to the Clerk of Southwold, Fingal, Ont.

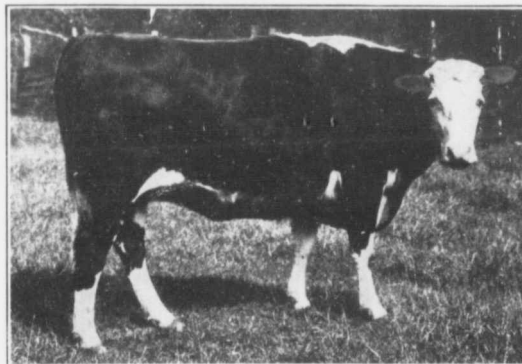
*Page Twenty-Four*



Southwold Thoroughbreds at Home



Jerseys



Ready for Market