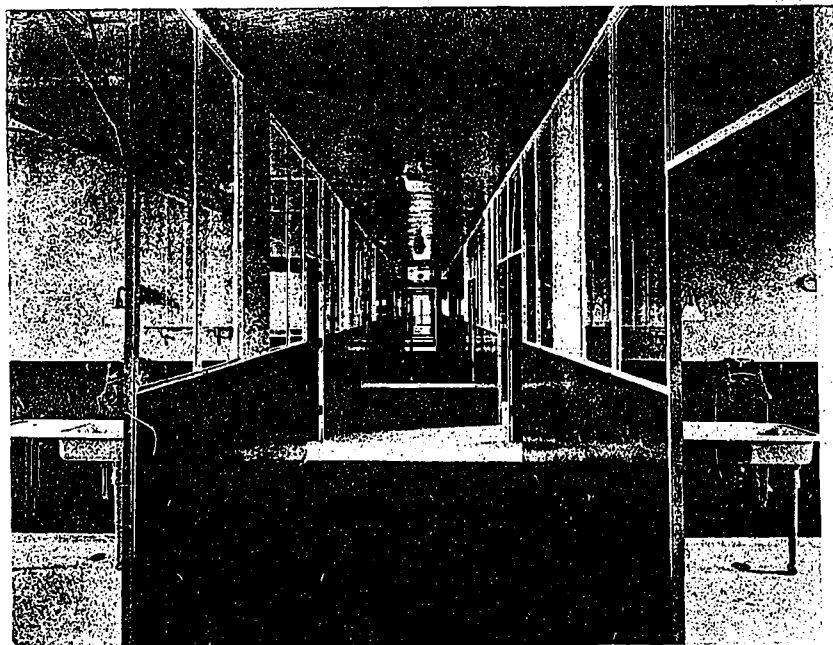


OUT-PATIENTS' WAITING ROOM.

with the orthopedic clinic is a large workshop with modern machinery driven by electric motors for manufacturing the various artificial appliances prescribed for patients in this department. The second and third floors of this wing are divided into 14 single and four 3-bed wards on each floor, making extra accommodation for 52 patients. These will be used for detention purposes to prevent the admission or spread of communicable diseases in the hospital. Each of these floors has its own diet kitchen, sink room, receiving and discharge rooms. The division between the wards themselves and corridors are made by means of metal and glass screens running from floor to ceiling for the



CORRIDOR, FIRST FLOOR, NEW WING.

purpose of keeping the patients under complete observation. These various floors are accessible by elevator or staircase, the elevator cage being constructed to take a bed if necessary. This elevator runs to roof, which is to be used as an open-air ward, having been covered with flat red tile, and protected by high parapet wall, with that end in view. There is provision also on this floor for kitchen, toilets and sink rooms, so that patients may be treated on the roof as long as is thought desirable. On both sides of ward floors and outside of building running from end to end are observation balconies, and at the south end of each floor are airing balconies. The top floor is

at present given up to accommodate the servants, and is so arranged as to be converted into wards when necessary. The basement is taken up by orthopedic workshop, autopsy room, morgue, chapel and various storerooms. The construction throughout is fireproof, the floor construction being concrete and expanded metal, all beams and columns being fireproofed with concrete, and wood trim being reduced to a minimum, only being used for doors and windows.

The hospital has followed the lead of many other institutions who find economy in providing their own light, heat and power, and for this purpose a building has been erected in a central position on the property. The basement of this building is occupied by the boiler room, containing three 200 h.p. water tube boilers, and a generating room, containing electric generators and ice manufacturing machinery. From this plant is derived the steam to heat the various buildings, being conveyed in mains run through tunnels constructed for them. From the generators is derived the electrical power necessary for lights and to drive the motors in use for fans, laundry, workshops and ice machine. The refrigeration is run in cork-covered piping to the Pasteurizing plant, ice-making room and cold storage boxes in the main building, and other parts of the hospital.

To provide the requisite draught for boilers, a stack has been erected to the north of the power-house at a height of 125 feet from the ground level, and high enough to