

Transportation Building, Ottawa

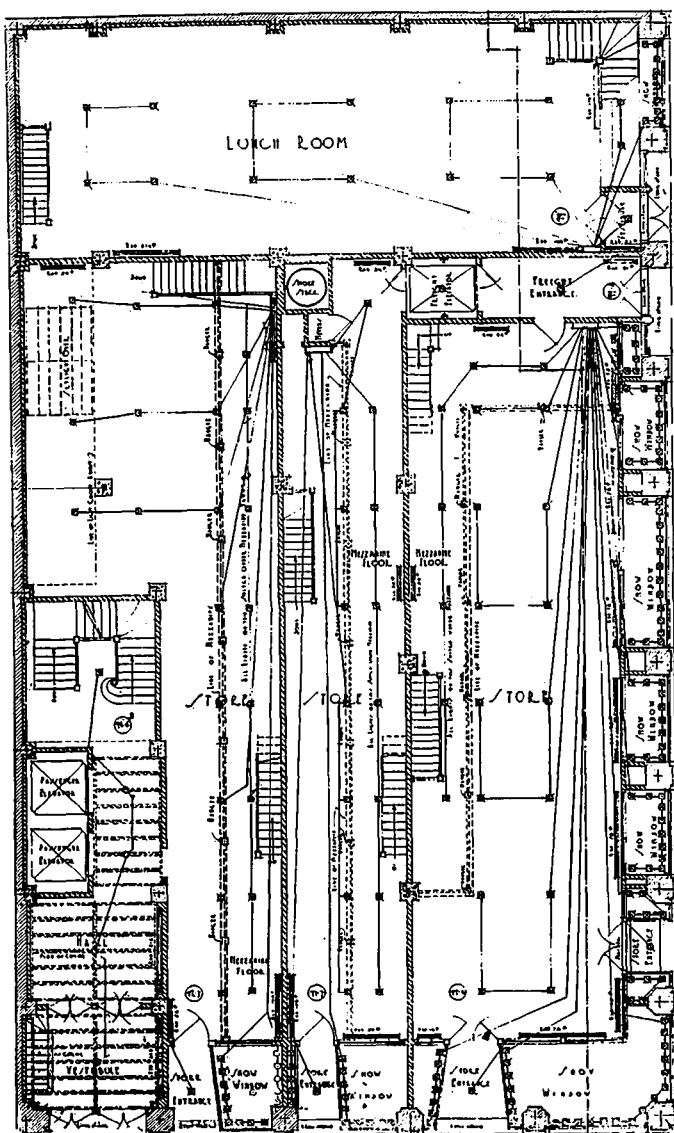
LOCATED at one of the most prominent intersections, the Transportation Building represents a recent development in Ottawa's business sections which visualizes the demand for modern store and office accommodations.

The design, which introduces a Gothic motif of simple form in the two facades, exhibits the vertical feeling characteristic of the modern tendency in buildings for this purpose, and is expressed in soft grey terra cotta with brick panels of a similar shade for portions of the front between the second and sixth storeys. Rising from a polished granite base, the piers are carried up to the top of the first floor and are linked together with arches over which a diapered band is carried round the two street fronts, forming a base for the pier above. At the level of the sixth floor another band is introduced ornamented with medallions, which forms a sill course for windows designed with elliptic heads in the upper storey. Above this is a cornice formed of a series of pendentives with perforated flamboyant panels.

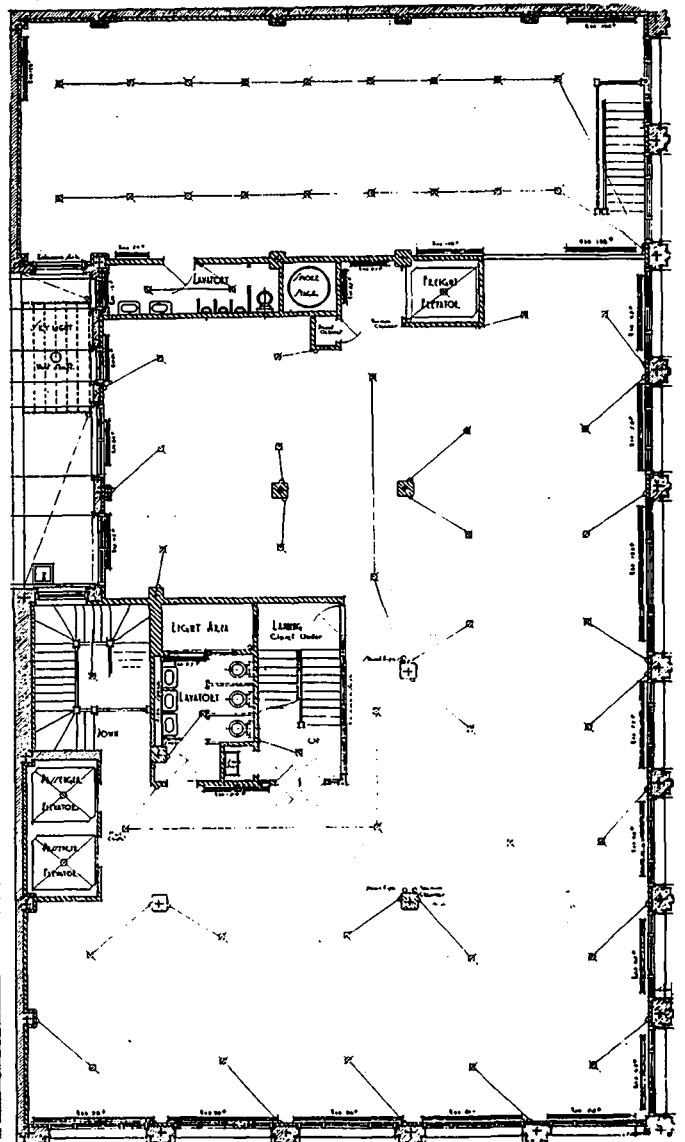
The frontage of the building extends 66 feet on Rideau street, and 116 feet on Sussex street. The main front on Rideau street is divided into five bays, four of which are used for stores and one as an entrance to the offices. These stores have a uniform depth of 90 feet, while the remaining portion on the Sussex street front is given over to a freight entrance with two smaller stores at the south end.

Entrance to the elevator and offices is through a vestibule and hall 11 feet wide and 16 feet high. Here the walls are panelled to a height of 12 feet with wide statuary marble in large panels, having light veined Broccadillo stiles. The base consists of dark grey Lapanto, and this also is used as a border for the floor of pink Tennessee marble. Above the marble panelling is a frieze of Gothic design employing the same motif as used on the exterior of the building, and terminating with a ribbed ceiling, having a slightly barrelled vault.

The staircase to the first floor is situated beyond the elevators and this is also executed with



GROUND FLOOR PLAN, TRANSPORTATION BUILDING, OTTAWA.



TYPICAL OFFICE FLOOR PLAN, TRANSPORTATION BUILDING, OTTAWA.