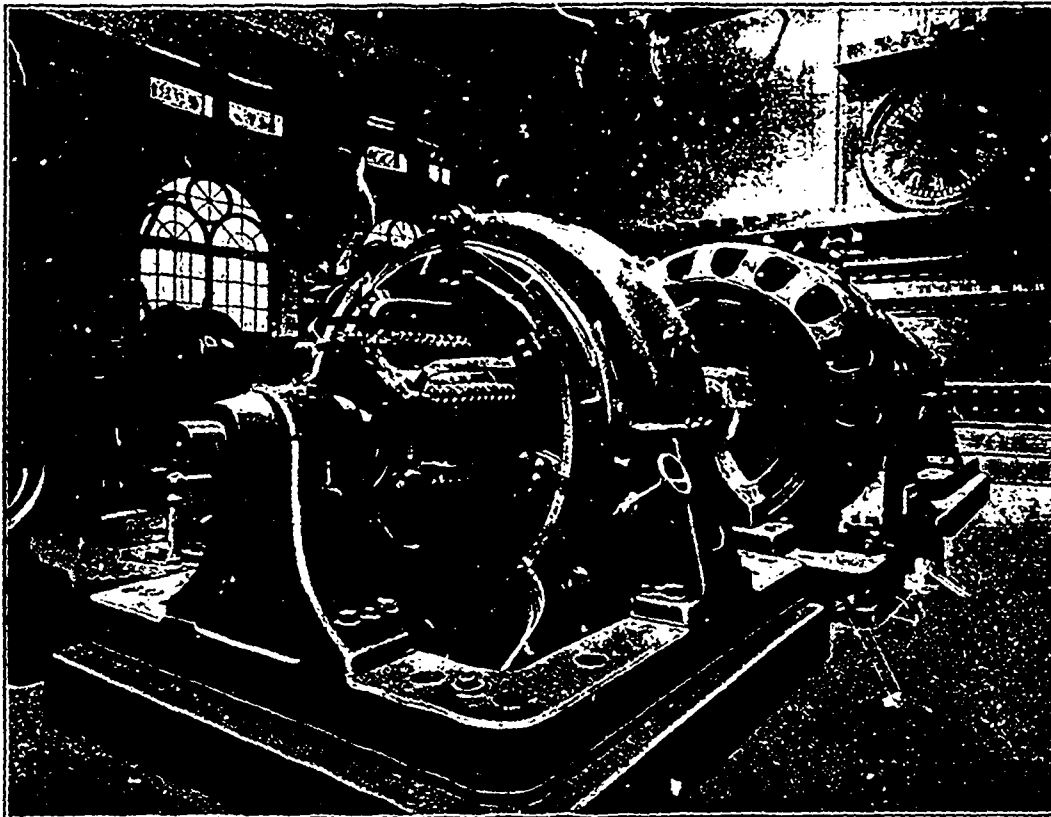


ELECTRIC PLANTS



Motor-Generator Set

COMPRISING ONE INDUCTION MOTOR, 1,500 K.W., 2,200 VOLTS, AND TWO 3-WIRE DIRECT CURRENT GENERATORS, EACH 500 K.W., 275 VOLTS, IN THE SCOTT STREET STATION OF THE TORONTO ELECTRIC LIGHT CO.

ALLIS-CHALMERS-BULLOCK

LIMITED

WORKS - - MONTREAL

SALES OFFICES:

MONTREAL

TORONTO

WINNIPEG

VANCOUVER

NEW GLASGOW

COBALT

CALGARY