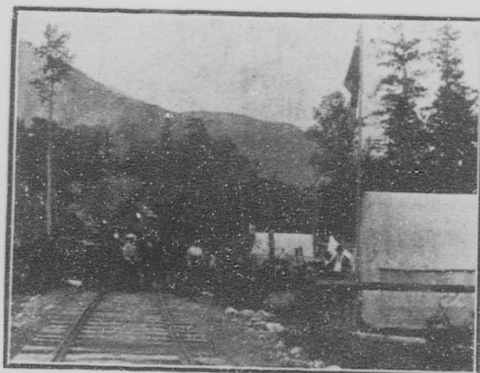


tus to mining and many properties that had been lying idle are now being vigorously worked, while fresh properties are being ex-



MINERS RECORDING CLAIMS AT A NEW CAMP.

ploited. The bounty on lead granted by the Dominion was of valuable assistance to mine owners during the period when the market price was below that fixed as the bonus-earning price.

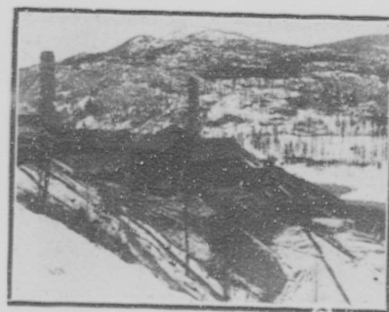
The output of the district for the year 1906 was as follows:

Slocan-Kootenay shipments.....	133,299 Tons.
Rossland.....	281,711 "
Boundary.....	1,155,138 "
	<hr/> 1,570,148 Tons.

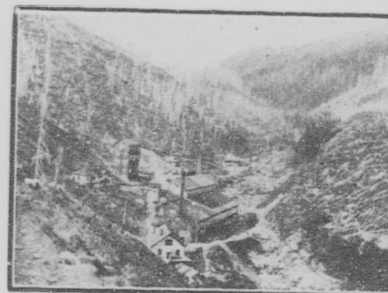
And the receipts of the various smelters were:

Hall Mines Smelter, Nelson.....	33,095 Tons.
Consolidated M. & S. Co.'s Smelter, Trail...	287,710 "
Marysville Smelter, Marysville.....	27,320 "
Dominion Cop. Co.'s Smelter, Boundary Falls.	218,200 "
B. C. Copper Co.'s Smelter, Greenwood.....	110,032 "
Granby Smelter, Grand Forks.....	815,244 "

Adjacent to the City of Nelson are being operated such well known properties as the Silver King (at present under lease), the celebrated Blue Bell, the Reliance, the Dandy Ollie, the Queen Victoria, the



SMELTER AT TRAIL.



YMIR.

properties, the Krao of Ainsworth—one of the richest silver showings on the continent, and many others of great value.

Nelson, however, derives benefit from the improved mining conditions

in all parts of the district as well as in those immediately subsidiary to it, and the total results of the mining industry for 1906, which show a very substantial increase over those for the preceding year, augur well for the future trade of Nelson.

The estimates for the year 1906 are that the yield was about 6,000,000 lbs. of lead, 295,000 ounces of gold, 3,000,000 ounces of silver and 45,000,000 pounds of copper, and the total value of the products is given as \$19,600,000, or an increase of some three and a half million dollars over the value of the products of 1905.

The large improvements carried out at the Hall Mines smelter at Nelson during the past year, at a cost of some \$100,000, enabling the cheaper reduction of lead, are having a beneficial effect, especially upon the silver-lead properties of the Slocan. The success of the refineries at Trail, the improvements to the smelter at Northport and its resumption of work, the establishment of the zinc smelter at Frank and the resulting

Eureka, the Ymir—a gold mining proposition with an 80 stamp mill, the La Plata—formerly the Mollie Gibson, the Arlington of Erie, the Queen and Second Relief—both gold mining



TRAIL.