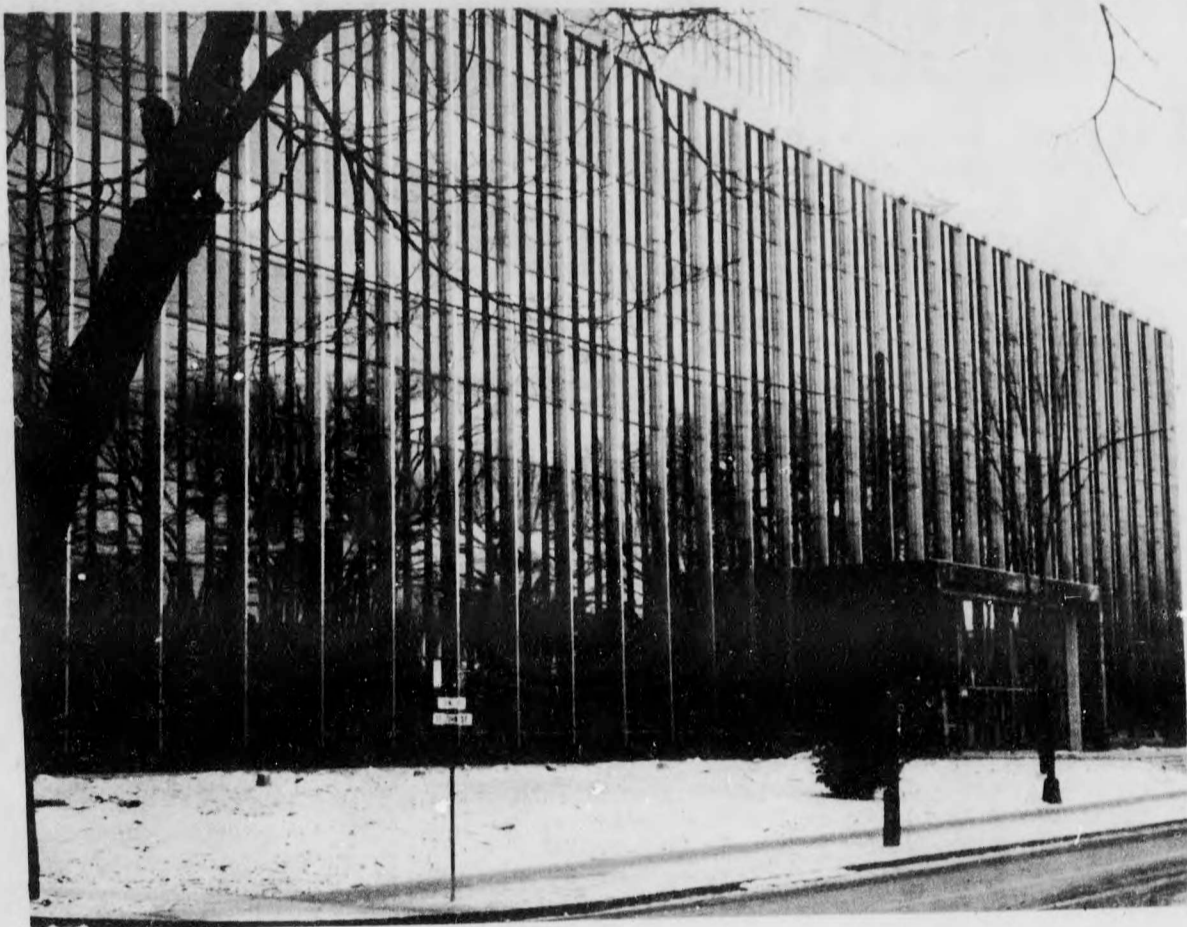
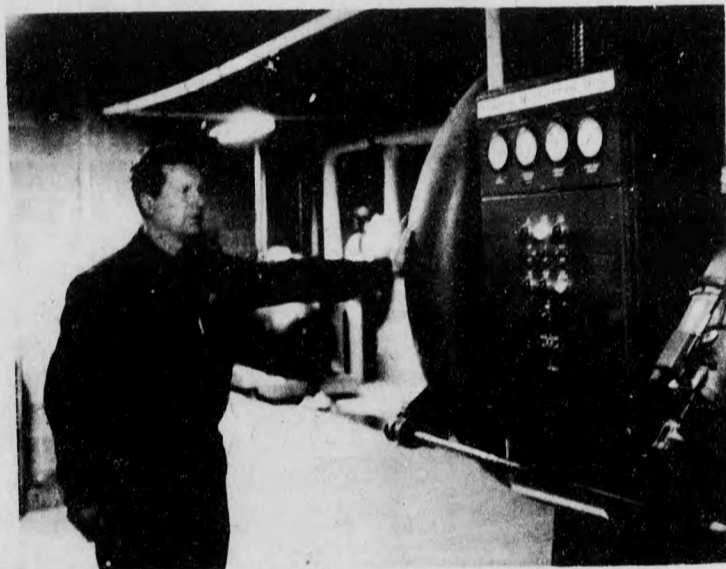


Finally - The Provincial Government Offices Under One Roof



- Photo by J. N-G.

"The Centennial Building as seen from King Street. The new Government headquarters has six main stories plus a two story 'penthouse'. Out front are twin aluminum flagpoles."



"Chief Engineer David Slipp stands beside his pride and joy - the 'Centro-Vac'-brain of the new building's air-conditioning system located on the top floor of the penthouse."

that desks do not have to be close to wall outlets but can be distributed efficiently without extension cords for elec-

trical power. This is hidden in cross the this means

that are set flush with the ceiling.

Partitions that may be removed and set up again in new positions are in use throughout the building. A change can be made in a few hours thus adding great flexibility to the office areas.

Executive offices are carpeted and wood-paneled. Picture windows give a view of the Playhouse, the Lord Beaverbrook Hotel and the St. John River.

Communications for the building is handled by a central switchboard. The Dept. of Public Works also maintains direct radio-telephone links with its outlying branches.

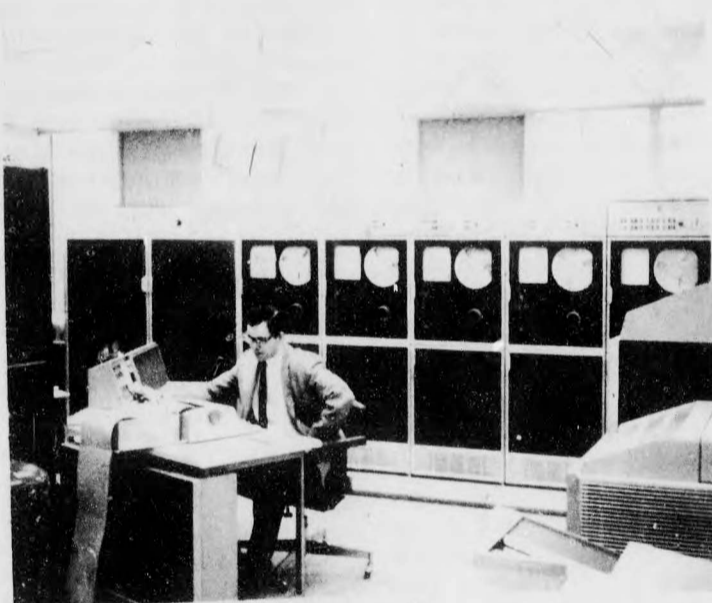
Security is controlled by the Canadian Corps of Commissionaires. Twenty-four hour service is provided. After 5:30 p.m. all doors but one are locked and anyone entering the building must sign in and out.

Fire protection is given by electronic sensors spotted through the building. There is a booster pump expressly for fire hoses and two outdoor outlets for fire department use if necessary. The building itself is built of fireproof materials. A General Motors auxiliary diesel stands by in case of power failure.

Snow melters will keep all entrances and loading ramps clear of ice and snow.

The Premier and his staff have their offices on the second floor. The Premier's desk is suitably decorated with a Provincial Coat of Arms carved in wood.

Adjacent to the Premier's office is the Executive Council Chamber. This room is considered by many to be the most beautiful single room in the building. The wall to wall carpeting and high-backed chairs are done in the same



"General Electric computer specialist Phil Lauterer sits at the operating console of the new GE 415 computer. Magnetic tapes are visible in background."

shade of red. (please see illustration).

will serve a most essential purpose in improving the standard and efficiency of public services in New Brunswick."

When Premier Robichaud laid the cornerstone of the building on March 26, 1965, he made the following comment: "I am confident that this new Centennial Building

The Brunswickan salutes both this magnificent new building and the Government that made it a reality.



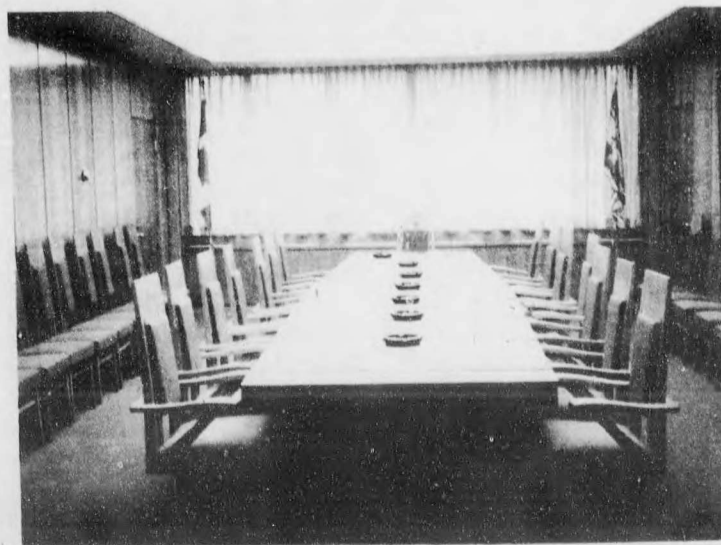
Shown conferring on a matter of state are, left to right: Deputy Minister of Public Works, Richard Palmer, building maintenance engineer, W.W. Colpitts, (UNB, Civil Engineering, 1960) and building administration supervisor, J.E. Thomas.

tronic typewriters.

conventional system of registers under each window.

Lighting and air-conditioning are integrated in a high-velocity system unique in the Maritimes. Streams of air actually circulate through the

A particularly pleasing lighting effect is achieved in all the corridors by using very wide-diameter circular lights



"The Executive Council Chamber. Note unique ceiling lighting. The door in the right hand corner leads to the Premier's office."