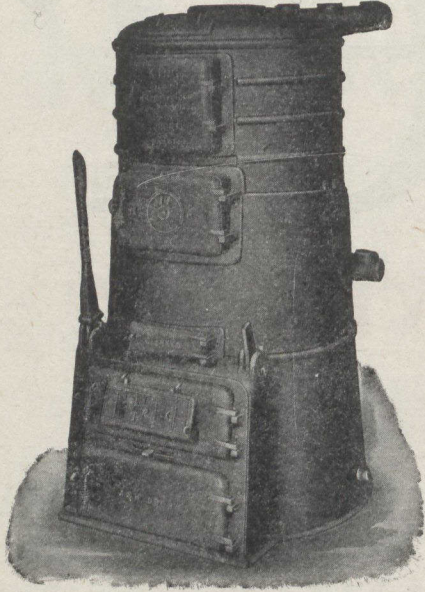


The "KING" Heating System

With a "KING" Hot Water Boiler and "KING" Radiators, solves the house-heating problems. . .



No. 6 High Base "King" Boiler, showing double shaker.

The "KING" Boiler has ALL the latest improvements in operating equipment and fuel saving features known to boiler construction.

TROUBLE PROOF GRATES

The "KING" patented grates and shaking mechanism are of the side lever adjustable construction and are simple enough for a child to understand, yet the most efficient ash remover yet produced. No bolts or pins are used in attaching grates to the connecting bar.

GET OUR BOOKLET "COMFORTABLE HOMES."
It explains *very* thoroughly.

STEEL and RADIATION, Limited
(HEAD OFFICE)

Fraser Ave., Toronto

Montreal, 138 Craig St. W. Quebec, 101 St. John St.

Agenies in all leading cities.



TAKE THE "ROYAL" ROAD TO EUROPE St. Lawrence Route Montreal to Bristol

A two days' sheltered sail down the mighty St. Lawrence—days of scenic beauty and historic interest—then but little more than three days on the Atlantic and passengers are whirled by special express trains from Bristol to London in two hours.

CANADIAN BROTHERHOOD EXCURSION

in connection with the

NATIONAL BROTHERHOOD CONFERENCE

Birmingham, Eng.,

September 20th to 24th, 1913

SAILING DATES

Leave Montreal.	Steamers.	Leave Bristol.
Sat., Aug. 9th.	Royal Edward.	Sat., Oct. 4th.
Sat., Aug. 23rd.	Royal George.	Sat., Oct. 18th.
Sat., Sept. 6th.	Royal Edward.	Sat., Nov. 1st.
	Royal George.	

Special parties will be formed to sail from Canada on above dates and choice accommodation reserved for them.
Special fares in connection with steamship passage will be quoted from any point in Canada to the seaboard.
Regular steamship fares between Montreal or Quebec and Bristol or London.

ATTRACTIONS IN ENGLAND

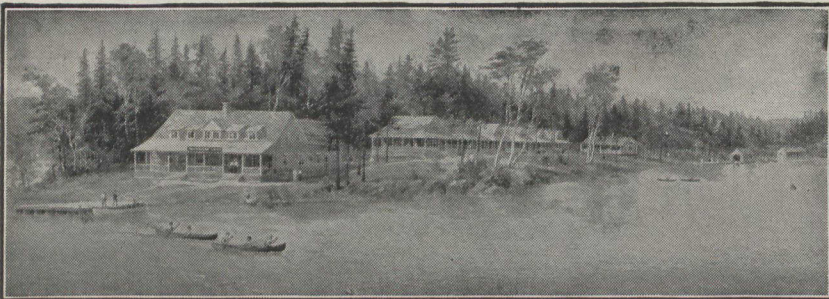
Civic reception at Avonmouth on arrival of "Royal Edward," due August 16th. Trip through the Shakespearian Country, including Stratford, Oxford and Windsor.
Reception by the Lord Mayor, Mansion House, London.
Demonstration at Crystal Palace, London. Choir of 4,000 male voices.
Visit to Windsor Castle.
National Brotherhood Conference at Birmingham.
Full information and further details will be gladly given by any Steamship Agent, or the following General Agents of the Canadian Northern Steamships:—P. Mooney, 123 Hollis St., Halifax, N.S.; Jas. Morrison, A.G.P.A., 226 St. James St., Montreal, Que.; H. C. Bourlier, 52 King St. E., Toronto, Ont.; and A. H. Davis, 254 Union Station, Winnipeg, Man.

ALGONQUIN NATIONAL PARK

THE IDEAL SUMMER RESORT FOR CAMPER, FISHERMAN, CANOEIST.

200 miles north of Toronto, 175 miles west of Ottawa Altitude, 2,000 feet above sea level

Good hotel accommodation



THE NEW CAMP-HOTEL "CAMP NOMINIGAN"

being inaugurated this season, will prove attractive. This sort of camp is new to the "Highlands of Ontario." It consists of log cabins constructed in groups in the hearts of the wilds, comfortably furnished with modern conveniences, such as baths, hot and cold water, always available.

Handsomely illustrated folder free on application to J. Quinlan, Bonaventure Station, Montreal; C. E. Horning, Union Station, Toronto, Ont.

G. T. BELL, Passenger Traffic Manager, Montreal.

H. G. ELLIOTT, General Passenger Agent, Montreal.

CANADIAN PACIFIC

GREAT LAKES SERVICE

FASTEST AND MOST LUXURIOUS OF STEAMERS

Port McNicoll, Sault Ste. Marie,
Port Arthur, Fort William

57 HOURS

TORONTO TO WINNIPEG
Leaving Tuesdays and Saturdays.
Other Luxurious Steamers Mondays, Wednesdays, Thursdays.

STEAMSHIP EXPRESS

Leaves Toronto Daily, except Friday and Sunday, 12.45 noon, and arrives at Ship's side 3.55 p.m. Parlor Cars, First-class Coaches.

A SERVICE PERFECTED BY STUDIED EFFORT AND YEARS OF EXPERIENCE

MUSKOKA LAKES POINTS

Conveniently and Comfortably Reached via
Canadian Pacific Railway and

BALA

THE HEART OF MUSKOKA LAKES DISTRICT

MUSKOKA LIMITED Leaves Toronto

DAILY EXCEPT SUNDAY 11.50 A.M. ARRIVING BALA 3.40 P.M.

RETURNING LEAVES BALA

DAILY EXCEPT SATURDAY 8.00 P.M. ARRIVING TORONTO 11.50 P.M.

Improved Facilities for Passengers and Baggage at Bala Wharf
Particulars from Canadian Pacific Agents or write M. G. MURPHY, D. P. A., C. P. Ry., Toronto