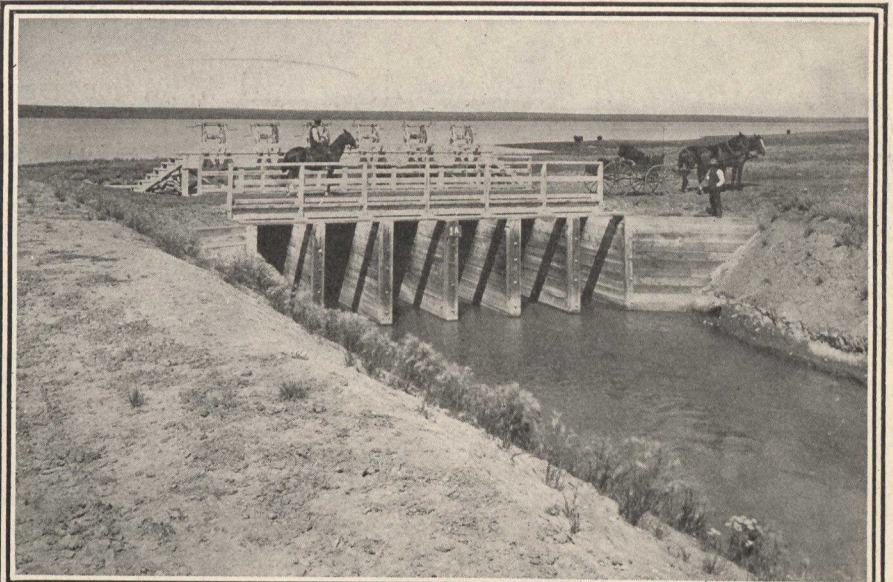


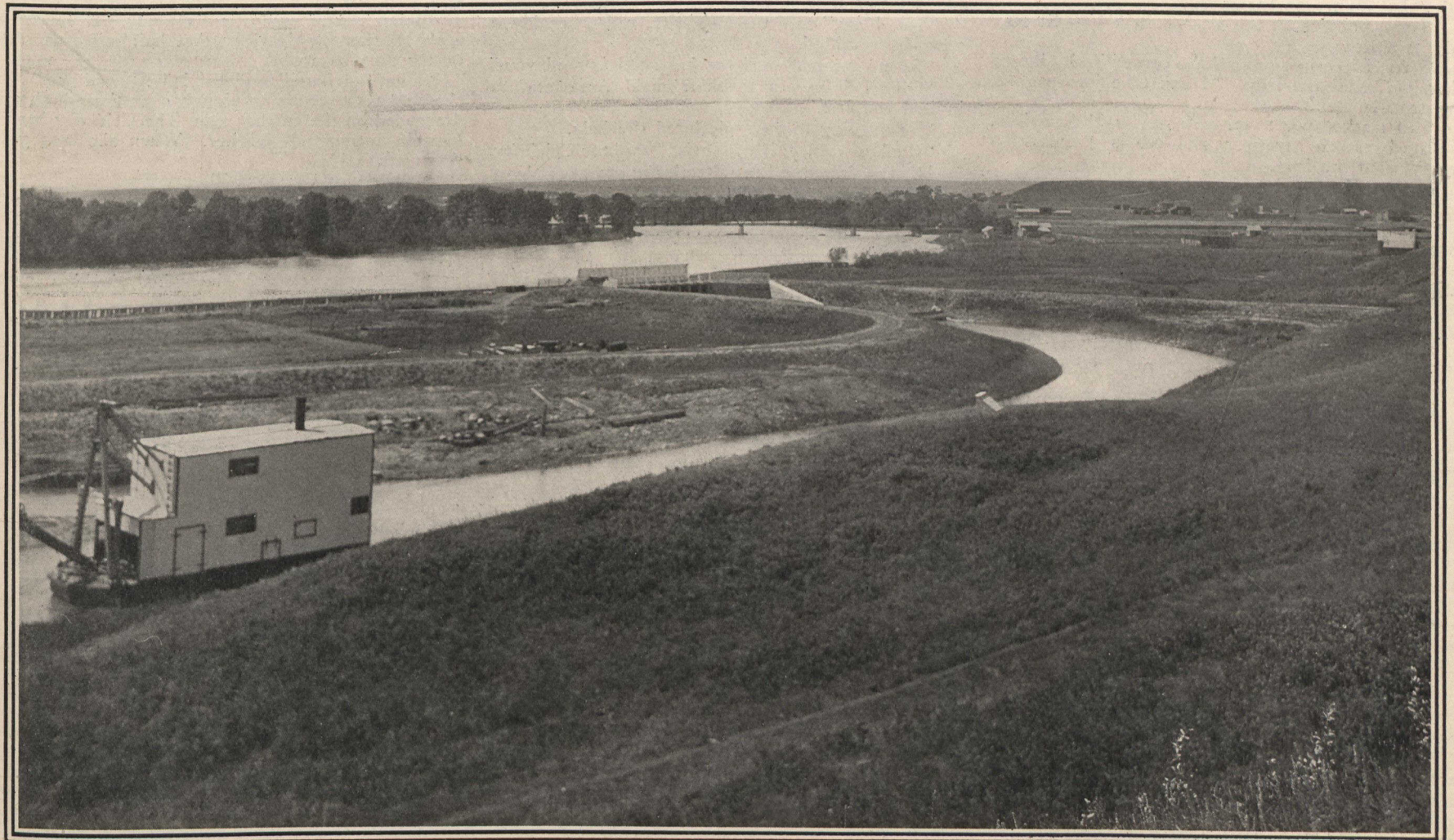
# THREE MILLION ACRES WATERED BY THE BOW



Crops on Irrigation Land are worth while to see.



Where the dammed-up Bow is a huge Reservoir.



To the rear the Bow, then the Headgates and the First Canal runs its Ribbon into the Dry Belt about Calgary.—Railway Bridge in Distance



The Dry Land and the Fertilizing Canal.



Big Drop one mile above the Reservoir of the Bow.